

LANCOM 800+
LANCOM DSL/I- 10+
LANCOM DSL/I- 1611 Office

© 2004 LANCOM Systems GmbH, Wuersele (Germany). All rights reserved.

While the information in this manual has been compiled with great care, it may not be deemed an assurance of product characteristics. LANCOM Systems shall be liable only to the degree specified in the terms of sale and delivery.

The reproduction and distribution of the documentation and software included with this product is subject to written permission by LANCOM Systems. We reserve the right to make any alterations that arise as the result of technical development.

Trademarks

Windows®, Windows XP® and Microsoft® are registered trademarks of Microsoft, Corp.

The LANCOM Systems logo and the name LANCOM are registered trademarks of LANCOM Systems GmbH. All other names mentioned may be trademarks or registered trademarks of their respective owners.

Subject to change without notice. No liability for technical errors or omissions.

This product includes software developed by the OpenSSL Project for use in the OpenSSL Toolkit <http://www.openssl.org/>.

LANCOM Systems GmbH

Adenauerstr. 20/B2

52146 Wuersele

Germany

www.lancom.de

Wuersele, November 2004

Preface

Thank you for placing your trust in this LANCOM product.

With the LANCOM router, you have chosen a powerful router that lets you easily and conveniently provide individual computers or an entire local network with high-speed Internet access. Dial-in connections and LAN to LAN couplings can be realized depending on the LANCOM model via ISDN or VPN.

Model variants

This user manual applies to the following models of the LANCOM router which are different in hard and software equipment:

- ▶ LANCOM 800+
- ▶ LANCOM DSL/I-10+
- ▶ LANCOM DSL/I-1611 Office

Model
restrictions

The sections of the documentation that refer only to a range of models are marked either in the corresponding text itself or with appropriate comments placed beside the text.

In the other parts of the documentation, all described models have been classified under the general term LANCOM router.

Security settings

For a carefree use of your device, we recommend to carry out all security settings (e.g. Firewall, encryption, access protection, charge lock), which are not already activated at the time of purchase of your device. The LANconfig wizard 'Check Security Settings' will support you accomplishing this. Further information regarding this topic can be found in chapter 'Security settings' →page 66.

We ask you additionally to inform you about technical developments and actual hints to your product on our Web page www.lancom.de, and to download new software versions if necessary.

User manual and reference manual

The documentation of your device consists of two parts: the user manual and the reference manual.

You are now reading the user manual. It contains all information you need to start your LANCOM router. It also contains the most important technical specification for the device.

► *Preface*

The reference manual can be found on the CD as an Acrobat (PDF) document. It is designed as a supplement to the user manual and goes into detail on topics that apply to a variety of devices. These include for example:

- Systems design of the LCOS operating system
- Configuration
- Management
- Diagnosis
- Security
- Routing and WAN functions
- Firewall
- Quality of Service (QoS)
- Virtual Private Networks (VPN)
- Virtual Local Networks (VLAN)
- Wireless networks (WLAN)
- LANCAPI
- Further server services (DHCP, DNS, charge management)

This documentation was compiled ...

...by several members of our staff from a variety of departments in order to ensure you the best possible support when using your LANCOM product.

In case you encounter any errors, or just want to issue critics or enhancements, please do not hesitate to send an email directly to:

info@lancom.de



Our online services (www.lancom.de) are available to you around the clock should you have any queries regarding the topics discussed in this manual or require any further support. In addition support from LANCOM Systems is also available to you. Telephone numbers and

contact information for LANCOM Systems support can be found on a separate insert, or at the LANCOM Systems website.

Notes symbols



Very important instructions. If not followed, damage may result.



Important instruction that should be followed.



Additional instructions which can be helpful, but are not required.

Contents

1 Introduction	9
1.1 How does DSL work?	9
1.2 Which use does VPN offer?	11
1.3 Firewall	14
1.4 What does a router do?	15
1.4.1 Bridgehead to the WAN	16
1.4.2 Areas of deployment for routers	16
1.5 What can your LANCOM router do?	17
2 Installation	20
2.1 Package contents	20
2.2 System preconditions	20
2.3 Introducing the LANCOM router	21
2.3.1 Status displays	21
2.3.2 The connections of the unit	26
2.4 Hardware installation	28
2.5 Software installation	29
2.5.1 Starting LANCOM setup	30
2.5.2 Which software should you install?	30
3 Basic configuration	32
3.1 Which information is necessary?	32
3.1.1 TCP/IP settings	32
3.1.2 Configuration protection	34
3.1.3 Settings for the DSL connection	34
3.1.4 Settings for the ISDN connection	34
3.1.5 Connect charge protection	35
3.2 Instructions for LANconfig	35
3.3 Instructions for WEBconfig	37
3.4 TCP/IP settings to workstation PCs	41

4	Setting up Internet access	43
4.1	Instructions for LANconfig	45
4.2	Instructions for WEBconfig	45
5	Linking two networks	46
5.1	What information is necessary?	47
5.1.1	General information	47
5.1.2	Settings for the TCP/IP router	49
5.1.3	Settings for the IPX router	50
5.1.4	Settings for NetBIOS routing	51
5.2	Instructions for LANconfig	52
5.3	Instructions for WEBconfig	52
6	Providing dial-in access	54
6.1	Which information is required?	54
6.1.1	General information	55
6.1.2	Settings for TCP/IP	56
6.1.3	Settings for IPX	56
6.1.4	Settings for NetBIOS routing	57
6.2	Settings for the dial-in computer	58
6.2.1	Dial-up via VPN	58
6.2.2	Dial-up via ISDN	58
6.3	Instructions for LANconfig	59
6.4	Instructions for WEBconfig	59
7	Sending faxes with LANCAPI	61
7.1	Installation of the LANCOM CAPI fax modem	62
7.2	Installation of the MS Windows fax service	63
7.3	Sending a fax	64
7.3.1	Send a fax with any given office application	64
7.3.2	Send a fax with the MS Windows fax service	64

► Contents

8 Security settings	66
8.1 The security settings wizard	66
8.1.1 Wizard for LANconfig	66
8.1.2 Wizard for WEBconfig	67
8.2 The firewall wizard	67
8.2.1 Wizard for LANconfig	67
8.2.2 Configuration under WEBconfig	68
8.3 The security checklist	68
9 Troubleshooting	71
9.1 No WAN connection is established	71
9.2 DSL data transfer is slow	72
9.3 Unwanted connections under Windows XP	72
10 Appendix	73
10.1 Performance data and specifications	73
10.2 Contact assignment	74
10.2.1 Ethernet WAN interface	74
10.2.2 ISDN-S ₀ interface	75
10.2.3 Ethernet interfaces 10/100Base-T	75
10.2.4 Configuration interface (Outband)	76
10.3 CE declaration of conformity	76
11 Index	77

1 Introduction

The models LANCOM 800+, LANCOM DSL/I-10+ and LANCOM DSL/I-1611 Office are fully-featured routers that therefore also can be used in combination with the integrated firewall for providing secure Internet access to a complete local network (LAN).

The VPN option, which is either integrated already or can be activated subsequently, enables the LANCOM DSL/I-1611 Office to act as powerful dynamic VPN gateway for external offices or mobile users.

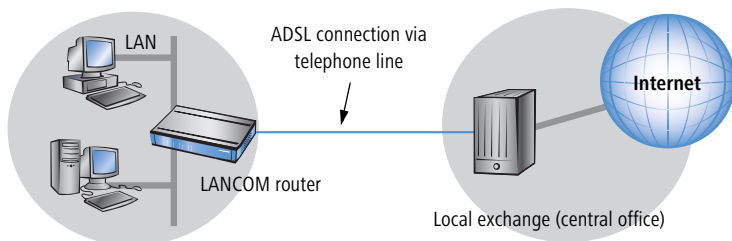
The LANCOM router models offer each an ISDN connector and partially an DSL connector (LANCOM DSL/I-10+ and LANCOM DSL/I-1611 Office). The ISDN line can be used as back-up for the DSL connection (LANCOM DSL/I-10+ and LANCOM DSL/I-1611 Office), for remote management of the router, as basis for the office communication via LANCAPI or for establishing dynamic VPN connections to remote sites with dynamic IP addresses (LANCOM DSL/I-1611 Office only).

1.1 How does DSL work?

Since the late 1980s, scientists have been working on the idea of using conventional telephone lines for video and multimedia applications.

High speed via standard telephone lines

Their approach was based on the use of telephone lines only for the distance between the subscriber and the next local exchange. From the switching center, the data is then transferred via high-speed connections to the desired destination or target network (i.e. the Internet). This minimization of the telephone line distance used permits considerably higher transfer rates than would be possible when relying solely on the telephone network.



► *Chapter 1: Introduction*

All DSL technologies, of which ADSL is the most common, are based on this concept. Thanks to their high transfer speeds, DSL connections are well-suited for Internet access.

Ideal for Internet surfers

The ADSL version of DSL was designed for applications in which the user receives high volumes of data but only transmits relatively small volumes. A typical example for this would be access to the world wide web (www). Only a few commands (mouse clicks) are required to initiate the download of very large volumes of data such as graphics, texts, audio or video files. The user typically only sends very small amounts of data across the Internet connection.

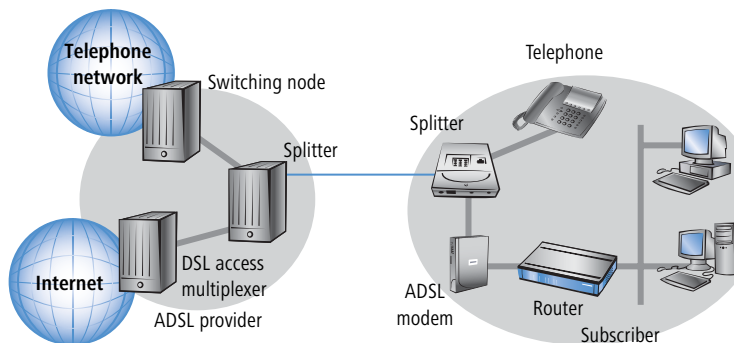
With an ADSL connection, a user can download at up to 8 Mbps (“downstream”) and upload at up to 800 Kbps (“upstream”). These maximum rates can be reduced as required by the ADSL provider. A typical access plan might specify, for example, between 1000 and 3000 Kbps download and 128 up to 384 Kbps upload speed.

All services via a single cable—thanks to the splitter

With ADSL, all traditional telephony applications (telephone, fax, answering machine, PBX) can still be used without restrictions. So-called splitters make this possible. Splitters are devices that separate the telephone line’s “voice frequencies” from the “data frequencies” and ensure that the signals are forwarded to the appropriate networks. Voice signals are passed on to the existing telephone network, while data signals are forwarded to their destinations (i.e. Internet providers) via high-bandwidth network connections.

A splitter is also used at the subscriber end to permit ADSL modems/routers and conventional telephone equipment to be used at the same time.

In some models the ADSL modem is integrated directly in the router. LANCOM 800+, LANCOM DSL/I-1611 Office or LANCOM DSL/I-10+ are connected to the splitter using a separate ADSL modem.



LANCOM 800+, LANCOM DSL/I-1611 Office or LANCOM DSL/I-10+ can also utilize other broadband connections (e.g. cable modem) that offer a 10/100Base-Tx-Ethernet connector over PPPoE, PPTP or plain Ethernet (with or without DHCP).

1.2 Which use does VPN offer?

For LANCOM DSL/I-1611 Office only

A VPN (**V**irtual **P**rivate **N**etwork) can be used to set up cost-effective, public IP networks, for example via the ultimate network: the Internet.

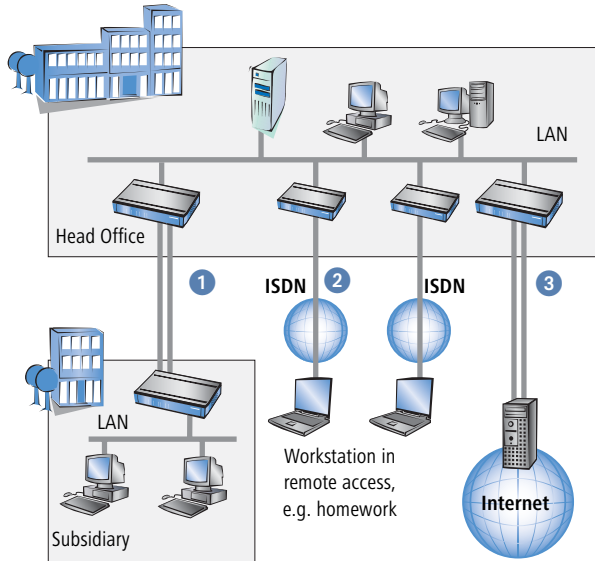


The model LANCOM DSL/I-1611 Office from LCOS-Version 3.32 upwards is equipped with 5 channels by default. The additional LANCOM VPN Option can extend VPN support to 25 active tunnels.

While this may sound unspectacular at first, in practice it has profound effects. To illustrate this, let's first look at a typical corporate network without VPN technology. In the second step, we will see how this network can be optimized by the deployment of VPN.

Conventional network infrastructure

First, let's have a look at a typical network structure that can be found in this form or similar forms in many companies:



The corporate network is based on the internal network (LAN) in the head-quarters. This LAN is connected to the outside world in three ways:

- 1 A subsidiary is connected to the LAN, typically using a leased line.
- 2 PCs dial into the central network via modem or ISDN connections (Remote Access Service – RAS).
- 3 The central LAN has a connection to the Internet so that its users can access the Web, and send and receive e-mail.

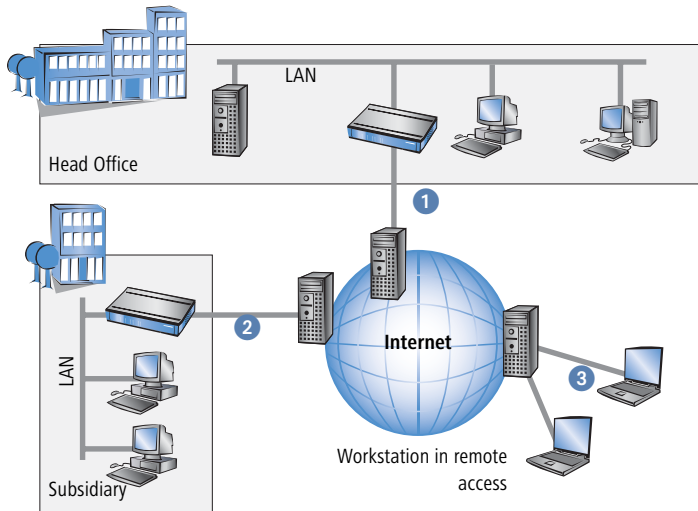
All connections to the outside world are based on dedicated lines, i.e. switched or leased lines. Dedicated lines are very reliable and secure. On the other hand, they involve high costs. In general, the costs for dedicated lines are dependent on the distance. Especially in the case of long-distance connections, keeping an eye out of cost-effective alternatives can be worthwhile.

The appropriate hardware must be available in the headquarters for every type of required connection (analog dial-up, ISDN, leased lines). In addition

to the original investment costs, ongoing costs are also incurred for the administration and maintenance of this equipment.

Networking via the Internet

The following structure results when using the Internet instead of direct connections :



All participants have fixed or dial-up connections to the Internet. Expensive dedicated lines are no longer needed.

- 1 All that is required is the Internet connection of the LAN in the headquarters. Special switching devices or routers for dedicated lines to individual participants are superfluous.
- 2 The subsidiary also has its own connection to the Internet.
- 3 The RAS PCs connect to the headquarters LAN via the Internet.

The Internet is available virtually everywhere and typically has low access costs. Significant savings can thus be achieved in relation to switched or dedicated connections, especially over long distances.

The physical connection no longer exists directly between two participants; instead, the participants rely on their connection to the Internet. The access technology used is not relevant in this case: ideally is the use of broadband

► Chapter 1: Introduction

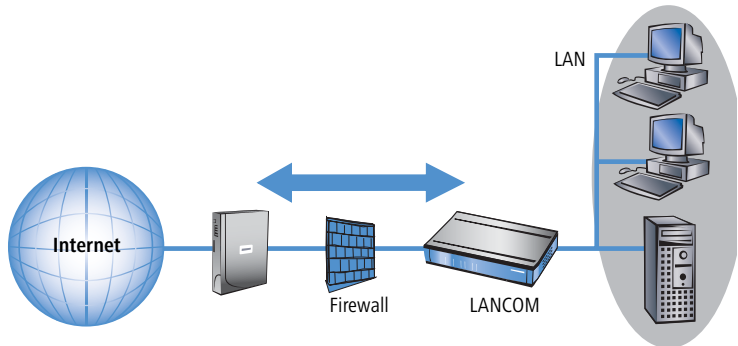
technologies such as DSL (Digital Subscriber Line). But also a conventional ISDN line can be used.

The technologies of the individual participants do not have to be compatible to one another, as would be the case for conventional direct connections. A single Internet access can be used to establish multiple simultaneous logical connections to a variety of remote stations.

The resulting savings and high flexibility makes the Internet (or any other IP network) an outstanding backbone for a corporate network.

1.3 Firewall

The integrated Stateful Inspection Firewall ensures an effective protection against undesired intrusion in your network by permitting only incoming data traffic as reaction to outgoing data traffic. The router's IP masquerading function hides all workstations of the LAN behind a single public IP address. The actual identities (IP addresses) of the individual workstations remain concealed. Firewall filters of the router permit specific IP addresses, protocols and ports to be blocked. With MAC address filters it is also possible to specifically monitor the access of workstations in the LAN to the IP routing function of the device.




Further important features of the Firewall are


► Intrusion Detection

Break-in attempts into the local network or on the central Firewall are recognized, repelled and logged by the Intrusion Detection system (IDS) of the LANCOM router. Thereby it can be selected between logging within the device, email notification, SNMP trap or SYSLOG alarms.

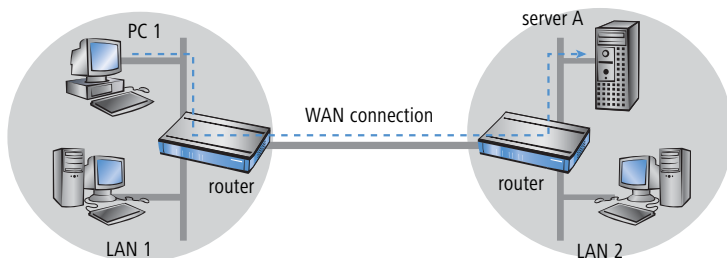
- ▶ Denial-of-Service Protection
Attacks from the Internet can be break-in attempts as well as attacks with the aim of blocking the accessibility and functionality of individual services. Therefore a LANCOM router is equipped with appropriate protective mechanisms, which recognize well-known hacker attacks and which guarantee the functionality.
- ▶ Quality-of-Service / Traffic management
The generic term Quality-of-Service (brief: QoS) summarizes the functions of the LANCOM which guarantee certain service qualities. The advantage is that the QoS functions can take place by means of the existing powerful classification methods of the Firewall (e.g. limitation of subnetworks, single workstations or certain services).
Guaranteed minimum bandwidths give priority to enterprise critical applications, VoIP PBX installations or certain user groups.

 More details about the function of the Stateful Inspection Firewall of your LANCOM router can be found in the reference manual on the LANCOM CD.

1.4 What does a router do?

 The following sections describe the functionality of routers in general. The functions supported by your device are listed in the table 'What can your LANCOM router do?' →page 17.

Routers connect LANs at different locations and individual PCs to form a Wide Area Network (WAN). With the appropriate rights, any computer in this WAN can access other computers and services of the complete WAN (as with 'PC 1' accessing 'Server A' in the remote LAN in the diagram).



▶ *Chapter 1: Introduction*

Connecting a LAN to the Internet does not technically differ from coupling two LANs. The only difference is that it is not just a handful of computers behind the Internet provider's router. Instead, it is the net of the networks - the public Internet.

1.4.1 Bridgehead to the WAN

All routers have at least two connections:

- ▶ at least one for the LAN
- ▶ at least one for WAN connections

In addition to LAN connectivity (10/100 Mbps Ethernet), several models also offer an integrated switch. For the connecting to the WAN, the routers use ISDN, xDSL/cable or ADSL connectors. Several devices contain additionally a wireless network card and can thus integrate also stations of WLANs (Wireless LANs) into the routing.

The router's task is to transfer data from the local network to the target network via a suitable WAN connection. Data is also transferred from the WAN to the desired recipients in the LAN.

1.4.2 Areas of deployment for routers

Routers are mainly used for the following applications:

- ▶ Internet access for a LAN (e.g. via DSL or ISDN)

The Internet consists of countless large and small networks that are inter-connected into the world's largest WAN via routers. The router links all the workstation computers on your local area network to the global Internet. Security functions such as IP masquerading protect your LAN against unauthorized access from outside.
- ▶ LAN to LAN coupling (via VPN or ISDN)

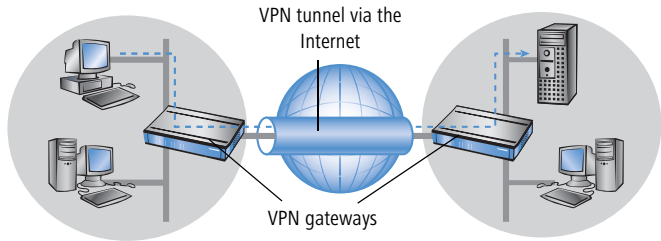
LAN to LAN coupling links individual LANs to form one large network, even if this means crossing continents. A typical example: A branch office is to be connected to the LAN of the headquarters. In principle, you can connect LANs in two ways:

 - ▷ High-speed coupling via VPN

The fastest and most economical LAN to LAN links are possible with VPN (**V**irtual **P**rivate **N**etwork) technology, as VPN uses the Internet as the basis for its communications. The fast xDSL connection of the router comes into its own here. The precondition: a VPN gateway with

Not possible with all LANCOM devices.

access to the Internet is required on either side of the network interconnection.



▷ Conventional via ISDN

Without VPN, a LAN to LAN interconnection can alternatively be realized via ISDN. In this case, an intelligent line management and sophisticated filter mechanisms keeps connection costs low.

▶ Remote access to the company network (via VPN or ISDN)

The work of many office workers in modern organizations is less and less dependent on any definite location—the most important factor here is unimpaired access to shared and freely available information.

Remote Access Service (RAS) is the magic word here. Employees working from home or field staff can dial into the company network via VPN or ISDN. When working with remote access via ISDN, the router protects the company network: the call back function only grants access to known and registered users.

1.5 What can your LANCOM router do?

The following table contains a direct comparison of the properties and functions of your devices with other models:

	LANCOM 800+	LANCOM DSL/I-10+	LANCOM DSL/I-1611 Office
Applications			
Internet access	✓	✓	✓
LAN to LAN coupling via VPN			✓

► Chapter 1: Introduction

	LANCOM 800+	LANCOM DSL/I-10+	LANCOM DSL/ I-1611 Office
LAN to LAN coupling via ISDN	✓	✓	✓
RAS server (via VPN)			✓
RAS server (via ISDN)	✓	✓	✓
IP router	✓	✓	✓
IPX router (via ISDN), e.g. for coupling of Novell networks or dialling into Novell networks	✓	✓	✓
NetBIOS proxy for coupling of Microsoft peer-to-peer networks via ISDN	✓	✓	✓
DHCP and DNS server (for LAN and WAN)	✓	✓	✓
N:N mapping for routing networks using the same IP address ranges via VPN			✓
Bridge function for coupling networks via ISDN connection	✓	✓	
LANCAPI server for the operating with office applications as fax or answering machine via ISDN interface	✓	✓	✓
WAN connection			
Connection for DSL or cable modem		✓	✓
ISDN S0 bus in multi device-mode or in point-to-point mode with automatic D-channel protocol identification. Supports static and dynamic channel bundling per MLPPP and BACP as well as Stac data compression (Hi/fn) and can be used for establishing dynamic VPN connections to remote sites with dynamic IP addresses (LANCOM DSL/I-1611 Office only).	✓	✓	✓
LAN connection			
Integrated 3-port auto-mode-switch (10/100 Mbps) with private mode, whereby the ports are concealed from one another.		✓	
Fast Ethernet LAN port	✓		✓
Security functions			
IPSec encryption in external software (VPN client)	✓	✓	✓
IP masquerading (NAT, PAT) to hide all workstations of the LAN behind one common public IP address.	✓	✓	✓
Stateful Inspection Firewall	✓	✓	✓
Firewall filters for a selective locking of IP addresses, protocols and ports	✓	✓	✓

	LANCOM 800+	LANCOM DSL/I-10+	LANCOM DSL/ I-1611 Office
MAC address filter control e.g. the access of LAN workstations to IP routing functions	✓	✓	✓
Configuration protection to block "brute force attacks"	✓	✓	✓
Configuration			
Configuration with LANconfig or with web browser, additionally terminal mode for Telnet or other terminal programs, SNMP interface and TFTP server function.	✓	✓	✓
Remote configuration via ISDN (with ISDN-PPP connections e.g. via Windows network and dial-up connections)	✓	✓	✓
Serial configuration interface	✓	✓	✓
Callback function with PPP authentication mechanisms for restriction to fixed ISDN telephone numbers	✓	✓	✓
FirmSafe with firmware versions for absolutely secure software upgrades	✓	✓	✓
Optional software extensions			
ISDN leased line option	✓	✓	✓
LANCOM VPN Option with 25 active tunnels for protection of network couplings			✓
LANCOM Service Option with 25 active tunnels for protection of network couplings	✓	✓	✓

2 Installation

This chapter will assist you to quickly install hardware and software. First, check the package contents and system requirements. The device can be installed and configured quickly and easily if all prerequisites are fulfilled.

2.1 Package contents

Please check the package contents for completeness before starting the installation. In addition to the device itself, the package should contain the following accessories:

	LANCOM 800+	LANCOM DSL/I-10+	LANCOM DSL/ I-1611 Office
Power adapter	✓	✓	✓
LAN connector cable (green plugs)	✓	✓	✓
WAN connector cable (dark blue plugs)		✓	✓
ISDN connector cable (light blue plugs)	✓	✓	✓
Connector cable for the configuration interface	✓	✓	✓
LANCOM CD	✓	✓	✓
Printed documentation	✓	✓	✓

If anything is missing, please contact your retailer or the address stated on the delivery slip of the unit.

2.2 System preconditions

Computers that connect to a LANCOM router must meet the following minimum requirements:

- ▶ Operating system that supports TCP/IP, e.g. Windows XP, Windows Millennium Edition (Me), Windows 2000, Windows 98, Windows 95, Windows NT, Linux, BSD Unix, Apple Mac OS, OS/2, BeOS.
- ▶ Access to the LAN via the TCP/IP protocol.



The LANtools and the LANCAPI functions also require a Windows operating system. A web browser is required for access to WEBconfig.

2.3 Introducing the LANCOM router

This section introduces your device. We will give you an overview of all status displays, connections and switches.



While the information in this section is useful for the installation of the device, it is not absolutely essential. You may therefore skip this section for the time being and go straight forward to 'Hardware installation' →page 28.

2.3.1 Status displays

The front and the rear panels (LANCOM DSL/I-10+) of the unit feature a series of LEDs. The various LANCOM router models have different numbers of indicators on the front panel depending on their functionality.

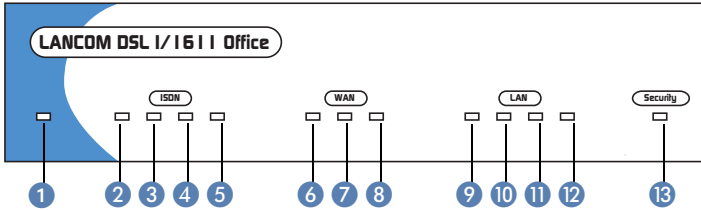
Meanings of the LEDs

In the following sections we will use different terms to describe the behaviour of the LEDs:

- ▶ **Blinking** means, that the LED is switched on or off at regular intervals in the respective indicated colour.
- ▶ **Flashing** means, that the LED lights up very briefly in the respective colour and stay then clearly longer (approximately 10x longer) switched off.
- ▶ **Inverse flashing** means the opposite. The LED lights permanently in the respective colour and is only briefly interrupted.
- ▶ **Flickering** means, that the LED is switched on and off in irregular intervals.

▶ Chapter 2: Installation

LEDs for LANCOM DSL/I-1611 Office

LANCOM DSL/I-1611
Office

Power/Msg 1

This LED flashes once when powering-up your device. After the self-test either an error is indicated by a flashing, or the device starts and the LED lights constantly.

off		Device off
red	flashing once	Self-test when powering up
red	blinking	Constant flashing indicates time or charge limit exceeded. Other flashing types indicate boot errors
red		Device is ready for use

ISDN S0 Status 2

Indicates the status of the ISDN-S₀ connection:

off		not connected or no S ₀ voltage (many ISDN connections disable the S ₀ voltage after a certain, inactive time)
green	blinking	initializing (establishing contact with the connection point)
green		ready for use (S ₀ bus activated, TEI existing and D channel protocol checked)
green	Power off	LED on, but Power-LED off: device in boot monitoring

ISDN Chan1 3

Status of the first logical ISDN B channel (in router as well as in CAPI operation):

off		no connection established
red	blinking	incoming call
green	blinking	outgoing call

red		physical line enabled, protocol negotiation ongoing
green		protocol negotiation (X.75, PPP etc) finished, physical and logical connection operational
green/red	short red flashes	indication of received data packets

ISDN Chan2 4

Status of the second logical ISDN B channel (meaning see ISDN Chan1)

ISDN-1+2 5

Indicates, whether the actual ISDN connection is a static or a dynamic channel bundling.

off	no bundled connection active
green	static or dynamic channel bundling connection active

WAN-Rx/Tx 6

This yellow LED indicates the data transfer via the WAN connection (via DSL or cable modem).

WAN-Link 7

This green LED indicates that the Ethernet connection between LANCOM router and the DSL resp. cable modem is operational.

WAN-Chan 8

This LED indicates the status of the WAN connection (via DSL or cable modem) to the provider. The connection to the provider normally requires a login with username and password. With time-dependent connecting rates arise charges during this time. The meanings of the LED in detail:

off	no active connection
red	establishing connection (login)
green	Connection established (login successful)

LAN-Rx/Tx 9

Data packet from the device to the LAN or from the LAN sent to the device

LAN-Coll 10

Sending collision

LAN-Link 11

The connection to the LAN is established and ready for use

LAN-Fast 12

The LAN speed is 100 Mbps

Security-VPN 13

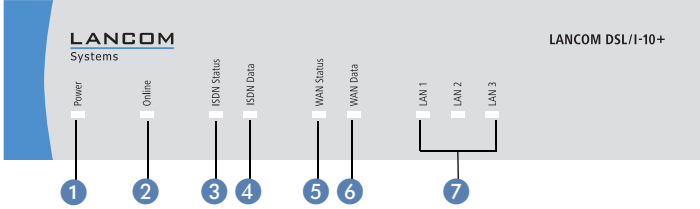
In VPN gateway operation, the LED provides the VPN status information:

off	no active VPN connection
green	VPN connection(s) active
red	establishing a VPN tunnel

► Chapter 2: Installation

LEDs for LANCOM 800+ and LANCOM DSL/I-10+

Model example:
LANCOM DSL/I-10+



EN

Power 1

This LED indicates that the device is operational. After the device has been switched on, it will flash green for the duration of the self-test. After the self-test, either an error is output by a flashing red light code or the device starts and the LED remains lit green.

off		Device off
green	blinking	Self-test when powering up
green	constantly on	Device ready for use
red/ green	blinking alternately	Device insecure: configuration password not assigned
red	blinking	Time or connect-charge reached



The power LED flashes red/green in alternation until a configuration password has been specified. Without a configuration password, the configuration data of the LANCOM is insecure. Under normal circumstances, you would assign a configuration password during the basic configuration (see instructions in the following chapter). For information about a later assignment of the configuration password see the section 'Security settings' →page 66.

Online 2

The Online LED indicates the overall status of all WAN ports:

off		No active connection
green	flashing	Establishing first connection
green	inverse flashing	Establishing further connection
green	constantly on	At least one connection established
red	constantly on	Error establishing the previous connection

Flashing Power LED but no connection?

There's no need to worry if the Power LED blinks red and you can no longer connect to the WAN. This simply indicates that a preset time or connect-charge limit has been reached. There are three methods available for unlocking:

- ▶ Reset connect charge protection.
- ▶ Increase the limit that has been reached.
- ▶ Completely deactivate the lock that has been triggered (set limit to '0').

If a time or connect charge limit has been reached, you will be notified in LANmonitor. To reset the connect charge protection, select **Reset Charge and Time Limits** in the context menu (right mouse click). You can configure the connect charge settings in LANconfig under **Management ▶ Costs** (you will only be able to access this configuration if 'Complete configuration display' is selected under **View ▶ Options...**).

You will find the connect charge protection reset in WEBconfig and all parameters under **Expert Configuration ▶ Setup ▶ Charges-module**.



Signal for reached time or connect-charge limit

ISDN status 3

Status of ISDN S_0 connection:

off		Not connected or no S_0 voltage (no error message)
green	blinking	Initializing D-channel (establishing contact with the connection point)
green	constantly on	D channel ready for use
red	blinking	Error (CRC error, framing error, etc.)
red	constantly on	Activation of D-channel failed



If the ISDN status LED goes out automatically, this does not indicate an S_0 bus error. Many ISDN connections and PBXs put the S_0 bus into a power-save mode after a certain time. The S_0 bus is automatically reactivated as required, and the ISDN status LED will once again light up green.

▶ Chapter 2: Installation

ISDN Data 4

Separate status display for both ISDN B channels:

off		No connection established
green	blinking	Dialling
green	flashing	Establishing first connection
green	flashing	Establishing further connection
green	constantly on	Connection established via B channel
green	flickering	Data traffic (send or receive)

WAN Status 5
(LANCOM DSL/I-
10+ only)

Connection status of the WAN connection:

off		not connected
green	blinking	Establishing connection
green	flashing	Protocol negotiation
green	constantly on	Connection established

WAN Data 6
(LANCOM DSL/I-
10+ only)

Data traffic via the WAN connection:

off		No network device connected
green	constantly on	Connection to network device operational, no data traffic
green	flickering	Data traffic (send or receive)

LAN 7

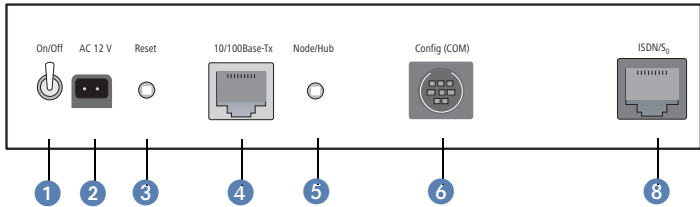
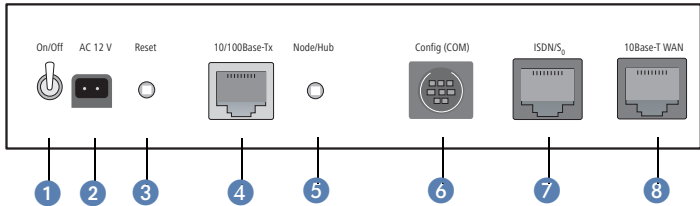
Status of the LAN ports in the integrated switch:

off		No network device connected
green	constantly on	Connection to network device operational, no data traffic
green	flickering	Data traffic

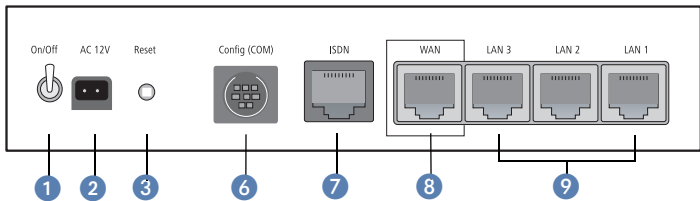
2.3.2 The connections of the unit

The connections and switches of the router are located on the back panel:

LANCOM 800+

LANCOM DSL/I-1611
Office

LANCOM DSL/I-10+



- 1 Voltage switch
- 2 Connection for the included power adapter
- 3 Reset switch
- 4 10/100Base Tx LAN port
- 5 Node/Hub switch
- 6 Serial configuration port
- 7 ISDN/S₀ port
- 8 WAN port
- 9 Switch with four 10/100Base-Tx connections



The reset switch has two different functions depending on the length of time that it is pressed:

▶ Chapter 2: Installation

- ▷ **Restarting the device** (soft reset) – push the button for less than five seconds. The device will restart.
- ▷ **Resetting the configuration** (hard reset) – push the button for more than five seconds. All the device's LEDs will light up green and stay on. As soon as the reset switch is released, the device will restart with factory default settings.

2.4 Hardware installation

The installation of the LANCOM router takes place in the following steps:

- ① **LAN** – connect the LANCOM router to your LAN. For that purpose, plug the included network cable (green plugs) into the LAN connector of the device ④ (LANCOM DSL/I-10+ and LANCOM DSL/I-1611 Office) or ⑨ (LANCOM DSL/I-10+) and the other end into a free network connecting socket of your local network, e.g. into a free socket of a hub/switch. The LAN connector identifies automatically the transfer rate (10/100 Mbps) of the connected network device (autosensing). A parallel connection of devices with different speeds and types is possible.

Alternatively you can connect an individual PC to the LANCOM router. Shift the node/hub switch 5 of the LANCOM DSL/I-1611 Office to the 'hub' position in this case. A LANCOM 800+ or LANCOM DSL/I-10+ identifies automatically the type of the connected network device (node/hub).




You should never have more than one unconfigured LANCOM router in a network segment at any given time. All unconfigured LANCOM router devices use the same IP address (with the final digits '254'), which would result in an address conflict. To avoid problems, always configure multiple LANCOM router devices one at a time, immediately assigning each device a unique IP address (one that does not end with '254').821/1621 only

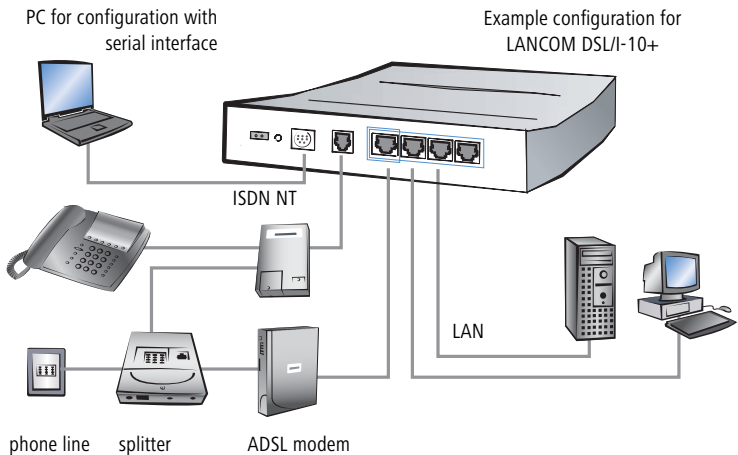
Not with LANCOM 800+

- ② **DSL** – connect the WAN interface ⑧ to the DSL modem socket using the supplied DSL connector cable (dark blue plugs).
- ③ **ISDN** – to connect the LANCOM router to the ISDN, plug one end of the supplied ISDN connector cable (light blue plugs) in the ISDN/S₀ port ⑦ of the router and the other end into an ISDN/S₀ multi-device mode or point-to-point mode connection.

- ④ **Configuration port** – you may optionally connect the router directly to the serial port (RS-232, V.24) of a PC. Use the cable supplied for this purpose. Connect the configuration port ⑥ with a free serial port of the PC.
- ⑤ **Connect to power** – Connect socket ② of the unit to a power supply using the included power adapter.


 Use the supplied power supply unit only! Using an unsuitable power supply unit may cause damage or injury.

- ⑥ **Operational?** – After a short device self-test the Power LED will be permanently lit. Green LAN LEDs indicate the LAN sockets that have functioning connections.



2.5 Software installation

This section covers the installation of the included system software LANtools for Windows.

 You may skip this section if you use your LANCOM router exclusively with computers running operating systems other than Windows.

▶ Chapter 2: Installation

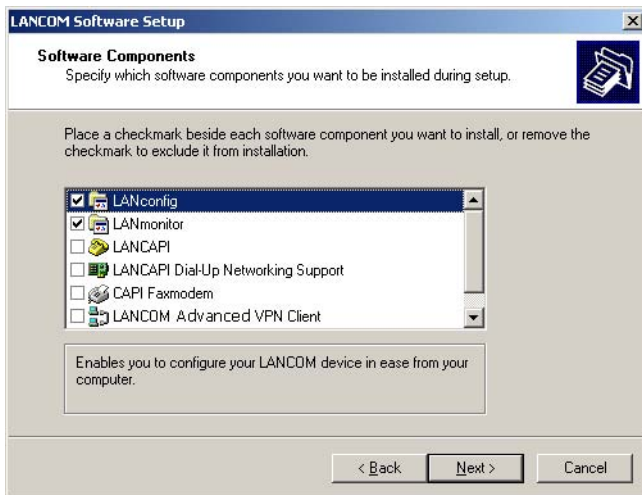
2.5.1 Starting LANCOM setup

Place the LANCOM CD in your CD drive. The LANCOM setup program will start automatically.



If the setup program does not start automatically, run AUTORUN.EXE in the root folder of the LANCOM CD.

In Setup select **Install LANCOM Software**. The following selection menus will appear on the screen:



2.5.2 Which software should you install?

- ▶ **LANconfig** is the configuration program for all LANCOM routers and Wireless LAN access points. WEBconfig can be used alternatively or in addition via a web browser.
- ▶ **LANmonitor** lets you monitor on a Windows PC all LANCOM routers and Wireless LAN access points.
- ▶ **LANCAPI** is a special form of the CAPI-2.0 interface that all workstations of the LAN need to get access to office communication functions as fax or EuroFile transfer. With **LANCAPI Dial-Up Networking Support**, single workstations can realize dial-up connections to an Internet provider via LANCAPI. The **CAPI fax modem** makes you available a first class fax driver.

▶ *Chapter 2: Installation*

- ▶ The **LANCOM VPN Client** enables a setting of VPN connections from a remote workstation via Internet to a router with LANCOM VPN Option.
- ▶ With **LANCOM Online Documentation**, you can copy the documentation files on your PC.

Select the appropriate software options and confirm your choice with **Next**. The software is automatically installed.

3 Basic configuration

The basic configuration can be performed on a step-by-step basis using a convenient setup wizard to guide you through the setup process and prompt you for the required information.

First, this chapter will inform you which information is required for the basic configuration. Use this section to assemble the information you will need before launching the wizard.

Next, enter the data in the setup wizard. Launching the wizard and the process itself are described step by step - with separate sections for LANconfig and WEBconfig. Thanks to the information that you have collected in advance, the basic configuration is quick and effortless.

At the end of this chapter we will show you the settings that are needed for the LAN's workstations to ensure trouble-free access to the router ('TCP/IP settings to workstation PCs' →page 41).

3.1 Which information is necessary?

The basic configuration wizard will take care of the basic TCP/IP configuration of the router, protect the device with a configuration password, and will set up the ISDN connection if required. The following descriptions of the information required by the wizard are grouped in these three configuration sections:

- ▶ TCP/IP settings
- ▶ protection of the configuration
- ▶ information on DSL connection
- ▶ information on ISDN connection
- ▶ configuring connect charge protection

3.1.1 TCP/IP settings

The TCP/IP configuration can be realized in two ways: either as a fully automatic configuration or manually. No user input is required for the fully automatic TCP/IP configuration. All parameters are set automatically by the setup wizard. During manual TCP/IP configuration, the wizard will prompt you for the usual TCP/IP parameters: IP address, netmask etc. (more on these topics later).

Fully automatic TCP/IP configuration is only possible in certain network environments. The setup wizard therefore analyses the connected LAN to determine whether it supports fully automatic configuration.

New LAN—fully automatic configuration possible

If all connected network devices are still unconfigured, the setup wizard will suggest fully automatic TCP/IP configuration. This may be the case in the following situations:

- ▶ a single PC is connected to the router
- ▶ setup of a new network

Fully automatic TCP/IP configuration will not be available when integrating the LANCOM router in an existing TCP/IP LAN. In this case, continue with the section 'Information required for manual TCP/IP configuration' →page 33.

The result of the fully automatic TCP/IP configuration: the router will be assigned the IP address '172.23.56.1' (netmask '255.255.255.0'). In addition, the integrated DHCP server will be enabled so that the LANCOM router can automatically assign IP addresses to the devices in the LAN.

Configure manually nevertheless?

The fully automatic TCP/IP configuration is optional. You may also select manual configuration instead. Make your selection after the following considerations:

- ▶ Choose automatic configuration if you are **not** familiar with networks and IP addresses.
- ▶ Select manual TCP/IP configuration if you are familiar with networks and IP addresses, and one of the following conditions is applicable:
 - ▷ You have not yet used IP addresses in your network but would like to do so now. You would like to specify the IP address for your router, selecting it from the address range reserved for private use, e.g. '10.0.0.1' with the netmask '255.255.255.0'. At the same time you will set the address range that the DHCP server uses for the other devices in the network (provided that the DHCP server is switched on).
 - ▷ You have previously used IP addresses for the computers in your LAN.

Information required for manual TCP/IP configuration

During manual TCP/IP configuration, the setup wizard will prompt you for the following information:

- ▶ **IP address and netmask for the LANCOM router**
Assign a free IP address from the address range of your LAN to the LANCOM router and specify the netmask.

▶ Chapter 3: Basic configuration

▶ **Enable DHCP server?**

Disable the DHCP server function in the LANCOM router if you would like to have a different DHCP server assign the IP addresses in your LAN.

3.1.2 Configuration protection

The password for configuration access to the LANCOM router protects the configuration against unauthorized access. The configuration of the router contains a considerable amount of sensitive information such as your Internet access information. We therefore strongly recommend protecting it with a password.

The setup wizard for the basic configuration automatically disables remote configuration access via ISDN, thus protecting your configuration against tampering. ISDN remote configuration access can be enabled at any time using the security wizard (see 'Have you permitted remote configuration?' →page 69).

3.1.3 Settings for the DSL connection

For the WAN connection it may be necessary to enter the transfer protocol being used. The wizard will e.g. automatically enter the correct settings for major DSL providers. You only need to enter the protocol used by your access provider if the wizard does not list your provider.

3.1.4 Settings for the ISDN connection


Set up the basic configuration of your ISDN connection if required. You will need the following data:

- ▶ One or more ISDN MSNs on which the router will accept calls. MSNs are ISDN subscriber numbers that are assigned to you by your telephone provider. They are normally entered without an area code. These numbers are only relevant for the router functions (LAN to LAN coupling, RAS), not for remote configuration and LANCOM VPN Option.
- ▶ A dialing prefix for access to the public telephone network. This is normally required only when using an ISDN PBX. '0' is the usual prefix. It is used for all outgoing calls.
- ▶ Finally, you should know whether your telephone provider transmits an ISDN connect-charge pulse. This signal can be used by the LANCOM router for connect-charge budgets and the accounting function.

3.1.5 Connect charge protection

Connect charge protection blocks connections that go beyond a previously set amount, protecting you from unexpectedly high connection costs.

In a LANCOM router, there are three independent budgets: For DSL access, you can set a maximum connection time in minutes. In addition to this time budget, there is also a budget for limiting ISDN connection charges.

 In order for the limitations according to connect charge rates to function properly, it is necessary to enter the information for connect charge rates through ISDN.

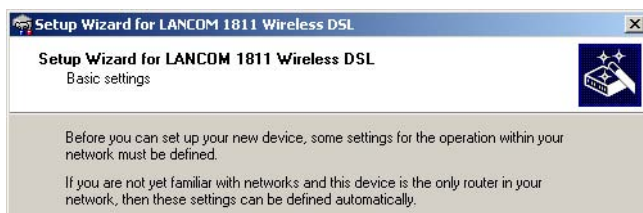
Any budget can be deactivated by entering the value '0'.


It is possible to completely turn off connect charge protection


3.2 Instructions for LANconfig

① Start up LANconfig by clicking **Start ▶ Programs ▶ LANCOM ▶ LANconfig**

LANconfig automatically detects the new LANCOM router in the TCP/IP network. Then the setup wizard starts that will help you make the basic settings of the device or will even do all the work for you (provided a suitable network environment exists).



 If the setup wizard does not start automatically, start a manual search for new devices on all ports (if the LANCOM router is connected via a serial port) or in the network (**Device ▶ Find**).

 If you cannot access an unconfigured LANCOM router, the problem may be due to the netmask of the LAN: with less than 254 possible

▶ Chapter 3: Basic configuration

hosts (netmask > '255.255.255.0'), please ensure that the IP address 'x.x.x.254' is located in your own subnet.

If you have chosen automatic TCP/IP configuration, please continue with Step ④.

- ② If you would like to configure the TCP/IP settings manually, assign an available address from a suitable address range to the LANCOM router. Confirm your choice with **Next**.
- ③ Specify whether or not the router should act as a DHCP server. Make your selection and confirm with **Next**.
- ④ In the following window, specify the password for configuration access. Note that the password is case-sensitive and ensure that it is sufficiently long (at least 6 characters).

In addition, you may specify whether the device may only be configured from the local network or whether remote configuration via the WAN (i.e. a remote network) is also permissible.



Please note that enabling this will also permit remote configuration via the Internet. You should always make sure that the configuration access is protected with a password.

- ⑤ In the next window, select your DSL provider from the list that is displayed. If you select 'My provider is not listed here,' you must enter the transfer protocol used by your DSL provider manually. Confirm your choice with **Next**.
- ⑥ Enter the ISDN subscriber numbers (as MSNs, i.e. without area code) on which the router will accept calls. Multiple numbers are separated by semicolons. If you do not specify any MSNs, the router will answer all incoming calls on the ISDN connection.

In addition, you can enter a trunk code for dialling into ISDN. Finally, you should specify whether or not the tariff information is to be transmitted at your ISDN connection. Confirm your choice with **Next**.

- ⑦ Connect charge protection can limit the cost of DSL and ISDN connections to a predetermined amount if desired. Confirm your choice with **Next**.
- ⑧ Complete the configuration with **Finish**.



Section 'TCP/IP settings to workstation PCs' auf Seite 41 will describe the settings required for the individual workstations in the LAN.

3.3 Instructions for WEBconfig

To configure the router with WEBconfig you must know how to address it in the LAN. The reaction of the devices, as well as their accessibility for configuration via web browser is dependent on whether a DHCP server and a DNS server are already active in the LAN, and whether these two server processes exchange the assignment of IP addresses to symbolic names within the LAN between each other.

After powered on, unconfigured LANCOM devices check first, whether a DHCP server is already active in the LAN. Dependent on the situation, the device is able to switch on its own DHCP server or, alternatively, to activate its DHCP client mode. In this second operating mode, the device itself can obtain an IP address from a DHCP server already existing in the LAN.

Network without DHCP server

In a network without DHCP server, unconfigured LANCOM devices activate their own DHCP server service after starting, and assign appropriate IP addresses and gateway information to the other workstations within the LAN, provided that the workstations are set to obtain their IP address automatically (auto-DHCP). In this constellation, the device can be accessed with any web browser from each PC with activated auto-DHCP function through the name **LANCOM** or by its IP address **172.23.56.254**.



If the configuration PC does not obtain its IP address from the LANCOM DHCP server, figure out the current IP address of this PC (with **Start ▶ Execute ▶ cmd** and command **ipconfig** at the prompt under Windows 2000 or Windows XP, with **Start ▶ Execute ▶ cmd** and the command **wiwinpcfg** at the prompt under Windows Me and Windows 9x, or with the command **ifconfig** on the console under Linux). In this case, the LANCOM is reachable under the IP

▶ Chapter 3: Basic configuration


address **x.x.x.254** (“x” stands for the first three blocks in the IP address of the configuration PC).

Network with DHCP server

If a DHCP server is active in the LAN to assign IP addresses, an unconfigured LANCOM device will turn off its own DHCP server. It will change into DHCP client mode and will obtain an IP address from the DHCP server of the LAN. This IP address is not known at first. The accessibility of the device depends on the name resolution:

- ▶ If there is a DNS server for name resolution in the LAN, which interchanges the assignment of IP addresses to names with the DHCP server, then the device can be accessed by the name “LANCOM <MAC address>” (e.g. “LANCOM-00a057xxxxx”).



 The MAC address can be found on a label at the bottom of the device.

- ▶ If there is no DNS server in the LAN, or it is not linked to the DHCP server, then the device can not be reached by the name. The following options remain in this case:
 - ▷ Figure out the DHCP-assigned IP address of the LANCOM by suitable tools and contact the device directly with this IP address.
 - ▷ Use LANconfig.
 - ▷ Connect a PC with a terminal program via the serial configuration interface to the device.

Starting the wizards in WEBconfig

- ① Start your web browser (e.g. Internet Explorer, Netscape Navigator, Opera) and call the LANCOM router there:

`http://<IP address of the LANCOM>`







(or with a name as discribed above)






If you cannot access an unconfigured LANCOM router, the problem may be due to the netmask of the LAN: with less than 254 possible hosts (netmask > '255.255.255.0'), please ensure that the IP address 'x.x.x.254' is located in your own subnet.

The WEBconfig main menu will be displayed:


Setup Wizards
Wizards enable you to handle frequent configuration jobs easily and quickly:

-  [Basic Settings](#)
-  [Security Settings](#)
-  [Setup Internet Access](#)
-  [Selection of Internet Provider](#)
-  [Setup a RAS Account](#)
-  [Connect Two Local Area Networks](#)



Device Configuration and Status
These menu options enable you to access the device's entire configuration:

-  [Expert Configuration](#)
-  [Save Configuration](#)
-  [Load Configuration](#)

Firmware Handling

-  [Perform a Firmware Upload](#)

Extras

-  [Show/Search Other Devices](#)
-  [Get Device SNMP MIB](#)



The setup wizards are tailored precisely to the functionality of the specific LANCOM router. As a result, your device may offer different wizards than those shown here.


If you have chosen automatic TCP/IP configuration, please continue with Step ④.

- ② If you would like to configure the TCP/IP settings manually, assign an available address from a suitable address range to the LANCOM router. Also set whether or not it is to operate as a DHCP server. Confirm your entry with **Apply**.

▶ Chapter 3: Basic configuration

- ③ In the following 'Security settings' window, specify a password for configuration access. Note that the password is case-sensitive and ensure that it is sufficiently long (at least 6 characters).

You may specify whether the device may only be configured from the local network or whether remote configuration via the WAN (i.e. a remote network) is also permissible.

-  Please note that enabling this will also permit remote configuration via the Internet. You should always make sure that the configuration access is suitably protected, e.g. with a password.

Remote configuration via a direct ISDN connection is available independently of the WAN remote configuration: in this case, the configuration PC establishes a direct dial-up ISDN connection to the LANCOM router, for example using Windows Dial-Up Networking. ISDN remote configuration can be enabled by specifying an MSN/terminal device selection digit for it. In this case, the LANCOM router will accept calls on that MSN/terminal device selection digit and can be remotely configured via the ISDN connection.

Confirm your selection with **Apply**.

- ④ In the next window, select your DSL provider from the list that is displayed. Confirm your choice with **Apply**.

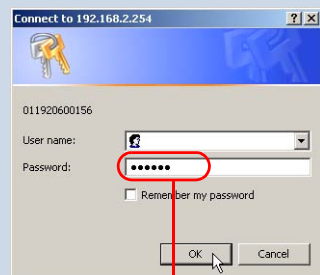
If you select 'My provider is not listed here,' you must enter the transfer protocol used by your DSL provider manually in the next window. Confirm your choice with **Apply**.

Entering the password in the web browser

When you are prompted for a user name and password by your web browser when accessing the device in the future, enter your personal values to the corresponding fields. Please note that the password is case-sensitive.

If you are using the common configuration account, enter the corresponding password only. Leave the user name field blank.

Entering the configuration password



- ⑤ Connect charge protection can limit the cost of DSL and ISDN connections to a predetermined amount if desired. Confirm your choice with **Apply**.

If your device does not feature an ISDN port, you may now close the setup wizard. Otherwise the wizard will prompt you to configure the ISDN port now. Make your choice and confirm it with **Apply**.

- ⑥ Enter the ISDN subscriber numbers (as MSNs, i.e. without area code) on which the router will accept calls. Multiple numbers are separated by semicolons. If you do not specify any MSNs, the router will answer all incoming calls on the ISDN connection.

In addition, you can enter a trunk code for dialling into ISDN. Finally, you should specify whether or not the tariff information is to be transmitted at your ISDN connection. Confirm your entries with **Apply**.

- ⑦ The basic setup wizard reports that all the necessary information has been provided. You can end the wizard with **Go on**.

3.4 TCP/IP settings to workstation PCs

The correct addressing of all devices within a LAN is extremely important for TCP/IP networks. In addition, all computers must know the IP addresses of two central points in the LAN:

- ▶ Default gateway – receives all packets that are not addressed to computers within the local network.
- ▶ DNS server – translates network names (www.lancom.de) or names of computers (www.lancom.de) to actual IP addresses.

The LANCOM router can perform the functions of both a default gateway and a DNS server. In addition, as a DHCP server it can also automatically assign valid IP addresses to all of the computers in the LAN.

The correct TCP/IP configuration of the PCs in the LAN depends on the method used to assign IP addresses within the LAN:

- ▶ **IP address assignment via the LANCOM router (default)**

In this operating mode the LANCOM router not only assigns IP addresses to the PCs in the LAN, it also uses DHCP to specify its own IP address as that of the default gateway and DNS server. The PCs must therefore be configured so that they automatically obtain their own IP address and the IP addresses of the standard gateway and DNS server (via DHCP).

▶ *Chapter 3: Basic configuration*

▶ **IP address assignment via a separate DHCP server**

The workstation PCs must be configured so that they automatically obtain their own IP address and the IP addresses of the standard gateway and DNS server (via DHCP). The IP address of the LANCOM router must be stored on the DHCP server so that the DHCP server transmits it to the PCs in the LAN as the standard gateway. In addition, the DHCP server should also specify the LANCOM router as a DNS server.

▶ **Manual IP address assignment**

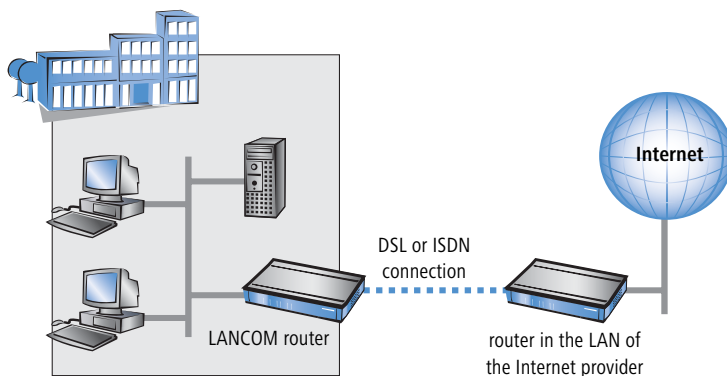
If the IP addresses in the network are assigned statically, then for each PC the IP address of the LANCOM router must be set in the TCP/IP configuration as the standard gateway and as a DNS server.



For further information and help on the TCP/IP settings of your LANCOM router, please see the reference manual. For more information on the network configuration of the workstation computers, please refer to the documentation of your operating system.

4 Setting up Internet access

All computers in the LAN can take advantage of the central Internet access of the LANCOM router. The connection to the Internet provider can be established via any WAN connection. Internet access via ISDN can be used as a backup connection for DSL, for example.



Does the setup wizard know your Internet provider?

A convenient wizard is available to help you set up Internet access. The wizard knows the access information of major Internet providers and will offer you a list of providers to choose from. If you find your Internet service provider on this list, you normally will not have to enter any further transfer parameters to configure your Internet access. Only the authentication data that are supplied by your provider are required.

Additional information for unknown Internet providers

If the setup wizard does not know your Internet provider, it will prompt you for all of the required information step by step. Your provider will supply this information.

▶ DSL

- ▷ Protocol: PPPoE, PPTP or Plain Ethernet
- ▷ Additionally for Plain Ethernet: own public IP address with netmask (not to be confused with the private LAN IP address), default gateway and DNS server. These values can be received automatically from providers that support DHCP.
- ▷ User name and password

▶ *Chapter 4: Setting up Internet access*

- ▶ **ISDN** – dial-in number
 - ▷ User name and password

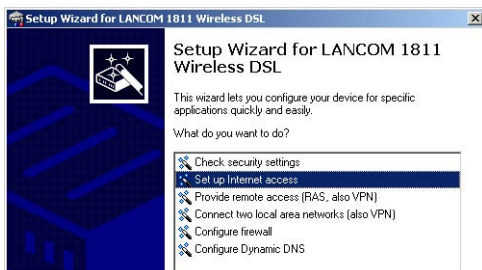
Additional connection options

You may also enable or disable further options in the wizard, depending on whether or not they are supported by your Internet provider:

- ▶ Time-based billing or flat rate – select the accounting model used by your Internet provider.
 - ▷ When using time-based billing, you can set the LANCOM router to automatically close existing connections if no data has been transferred within a specified time (the so-called idle time).
In addition, you can activate a line monitor that identifies inactive remote stations faster and therefore can close the connection before the idle time has elapsed.
 - ▷ Active line monitoring can also be used with flat rate billing to continuously check the function of the remote station.
You also have the option of keeping flat rate connections alive if required. Dropped connections are then automatically re-established.
- ▶ Dynamic channel bundling (ISDN only)
 - ▷ if required, the second ISDN B-channel will automatically be bundled to the connection. This doubles the available bandwidth; it may also double your connect charges as well, however. What's more, your ISDN connection will be busy in this case, with all other incoming and outgoing calls being rejected.
- ▶ Data compression
 - ▷ this permits an additional increase in data throughput.

4.1 Instructions for LANconfig

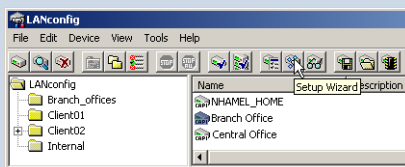
- ① Highlight the LANCOM router in the selection window. From the menu bar, select **Tools ▶ Setup Wizard**.



- ② From the menu, select the **Setup Internet access** wizard and click **Next**.
- ③ In the following window select your country and your Internet provider if possible, and enter your access information.
- ④ Depending on their availability, the wizard will display additional options for your Internet connection.
- ⑤ The wizard will inform you as soon as the entered information is complete. Complete the configuration with **Finish**.

LANconfig: Quick access to the setup wizards

Under LANconfig, the fastest way to launch the setup wizards is via the button on the toolbar.



4.2 Instructions for WEBconfig

- ① In the main menu, select **Setup Internet access**.
- ② In the following window select your country and your Internet provider if possible, and enter your access information.
- ③ Depending on their availability, the wizard will display additional options for your Internet connection.
- ④ The wizard will inform you as soon as the entered information is complete. Complete the configuration with **Apply**.

5 Linking two networks

With the network interconnection (also known as LAN to LAN coupling) of the LANCOM router, two local networks are linked. The LAN to LAN coupling can be realized in principle in two different ways:

- ▶ **VPN:** For coupling via VPN, the connection between both LANs is established over a specially secured connection through the public Internet. A router with VPN support is required in both LANs.
- ▶ **ISDN:** For coupling via ISDN, a direct connection between both LANs is established over an ISDN connection. A router with ISDN interface is required in both LANs.

Always configure both sides

Both routers involved in the network interconnection must be configured. Care must be taken to ensure that the configuration information provided matches.



The following instructions will assume that LANCOM router devices are being used on both sides. A network interconnection may also be realized with routers from other manufacturers. A mixed setup usually requires more extensive configuration measures for both devices, however. Please refer to the reference manual for more information in this regard.

A setup wizard handles the configuration of the connection in the usual convenient manner.

Security aspects

You must, of course, protect your LAN against unauthorized access. A LANCOM router therefore offers a whole range of security mechanisms that can provide an outstanding level of protection:

- ▶ **VPN:** Network couplings via VPN transmit data by IPSec. The data are encrypted by AES, 3-DES, Blowfish or CAST encryption algorithms.
- ▶ **ISDN:** For network couplings via ISDN, the connection password, the checking of the ISDN number and the callback function ensure the security of the connection.



The ISDN call back function cannot be configured using the wizard. It can only be set up in the expert configuration. For details, please see the reference manual.

5.1 What information is necessary?

The wizard will prompt you for the necessary information on a step-by-step basis. If possible, however, you should have it available before launching the wizard.

To explain the significance of the information requested by the wizard, we will be using a typical deployment as an example: setting up a link between a branch office and its headquarters. The routers involved are named 'HEAD_OFFICE' and 'BRANCH'.

Please refer to the following tables for the entries to be made for each of the routers. Arrows mark the dependencies between the entries.

5.1.1 General information

The following details are required for the installation of LAN to LAN couplings. The first column indicates, whether the information is required for VPN and/ or ISDN network couplings.

Coupling	Entry	Gateway 1		Gateway 2
VPN	ISDN connection available?	yes/no		yes/no
VPN	Type of the local IP address	static/dynamic		static/dynamic
VPN	Type of the remote IP address	static/dynamic		static/dynamic
VPN + ISDN	Name of the local device	'HEAD'		'BRANCH'
VPN + ISDN	Name of the remote station	'BRANCH'		'HEAD'
VPN + ISDN	Remote ISDN calling number	(0123) 123456		(0789) 654321
VPN + ISDN	Remote ISDN caller ID	(0789) 654321		(0123) 123456
VPN + ISDN	Password for secure transmission of the IP address	'Password'		'Password'
VPN	Shared secret for encryption	'Secret'		'Secret'
VPN	IP address of remote station	'10.0.2.100'		'10.0.1.100'
VPN	IP network address of the remote network	'10.0.2.0'		'10.0.1.0'

▶ Chapter 5: Linking two networks

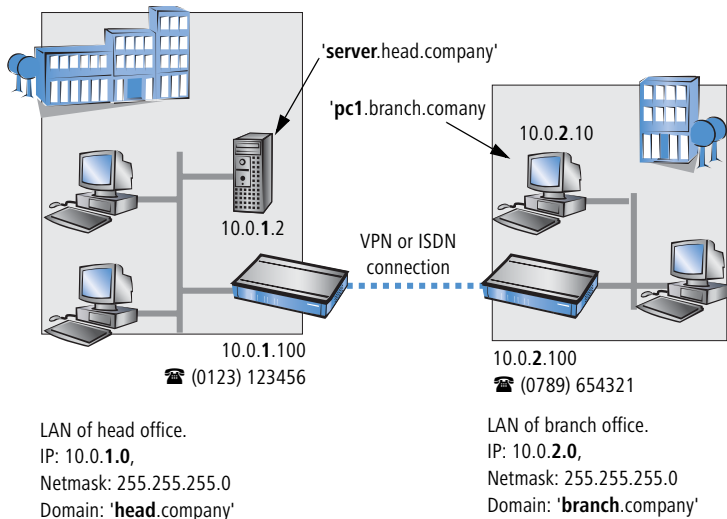
Coupling	Entry	Gateway 1	Gateway 2
VPN	Netmask of the remote network	255.255.255.0	255.255.255.0
VPN	Domain name of the remote network	'head'	'branch'
VPN	Hide local stations for access to remote network (Extranet VPN)?	yes/no	yes/no
ISDN	TCP/IP routing for access to remote network	yes/no	yes/no
ISDN	IPX routing for access to remote network	yes/no	yes/no
VPN + ISDN	NetBIOS routing for access to remote network?	yes/no	yes/no
VPN + ISDN	Name of remote workgroup (NetBIOS only)	'workgroup1'	'workgroup2'
ISDN	Data compression	on/off	↔ on/off
ISDN	Channel bundling	on/off	↔ on/off

- ▶ In case your device has an **ISDN connection**, the wizard asks whether the remote site has ISDN as well.
- ▶ The type of IP address must be stated for both sides for VPN connections via the Internet. There are two types of IP addresses: static and dynamic. An explanation of the two **IP address types** can be found in the reference manual.
Thanks to Dynamic VPN, connections can be enabled not only between gateways with fixed, static IP addresses, but even between gateways with dynamic IP addresses. The active initiation of VPN connections towards remote sites with dynamic IP addresses requires ISDN.
- ▶ If you haven't already named your LANCOM router, the wizard will ask you for a new, **unique device name**. With this entry, you will rename your LANCOM router. Be sure to give the two devices different names.
- ▶ The **name of the remote station** is needed for its identification.
- ▶ Enter the subscriber number of the remote station in the **ISDN subscriber number** field. The complete subscriber number including all necessary area and country codes is required.
- ▶ The stated **ISDN caller ID** is used to identify and authenticate callers. When a LANCOM router receives a call, it compares the ISDN caller ID entered for the remote station with the actual caller ID transferred via the D channel. An ISDN caller ID generally consists of an area code and an MSN.

- ▶ The **password for the ISDN connection** is an alternative to the use of the ISDN caller ID. It is always used to authenticate callers that do not send an ISDN caller ID. The exact same password must be entered on both sides. It is used for calls in both directions.
- ▶ The **Shared Secret** is the central password for security within the VPN. The exact same password has to be entered on both sides
- ▶ Data compression increases the transfer speed of the connection at no additional cost. This is completely unlike the bundling of two ISDN- channels with MLPPP (**Multi Link PPP**): The transfer rate will be doubled but there will also be additional telephone costs for two connections.

5.1.2 Settings for the TCP/IP router

In TCP/IP networks, addressing has a special significance. Please note that two interconnected networks are logically separate from one another. Each must therefore have its own network number (in our example, '10.0.1.x' and '10.0.2.x'). These network numbers may not be identical.



Unlike when accessing the Internet, all of the IP addresses in the involved networks are visible on the remote side when coupling networks, not just those of the router. The computer with the IP address 10.0.2.10 in the branch office LAN sees the server 10.0.1.2 in the headquarters and can access it (assuming it has the appropriate rights), and vice versa.

DNS access to the remote LAN

Thanks to DNS, it is not only possible to access remote computers in a TCP/IP network via their IP address, but also by using freely defined names.

For example, the computer with the name 'pc1.branch.company' (IP 10.0.2.10) will not only be able to access the server of the head office via its IP address, but also via its name, 'server.head.company'. The only precondition: the domain of the remote network in the wizard must be specified.



The domain can only be specified in the LANconfig wizard. In WEBconfig, enter the appropriate information later in the expert configuration. For more information, see the LANCOM reference manual.

Extranet VPN

Finally, one can decide whether access to local stations is permitted. In this 'Extranet VPN' operating mode, the IP stations do not expose their IP address to the remote LAN, rather they will be hidden behind the VPN gateway's IP address instead.

Therefore, the stations within the remote LAN cannot access IP stations in the other LAN directly. For example, if a headquarters LAN in 'Extranet VPN' mode is hidden behind its gateway's address '10.10.2.100', and one of its IP stations (e.g. '10.10.2.13') accesses the IP station '10.10.1.2' of the branch office, then the branch office's IP stations deem to be accessed by '10.10.2.100'. The true IP address of the accessor ('10.10.2.13') is hidden.

If two LANs shall be coupled in Extranet mode, please ensure to enter the 'outbound' Extranet IP address of the remote site, not its Intranet address. According to the example, this was '10.10.2.100'. The appropriate netmask for the Extranet IP address would be '255.255.255.255' then.

5.1.3 Settings for the IPX router



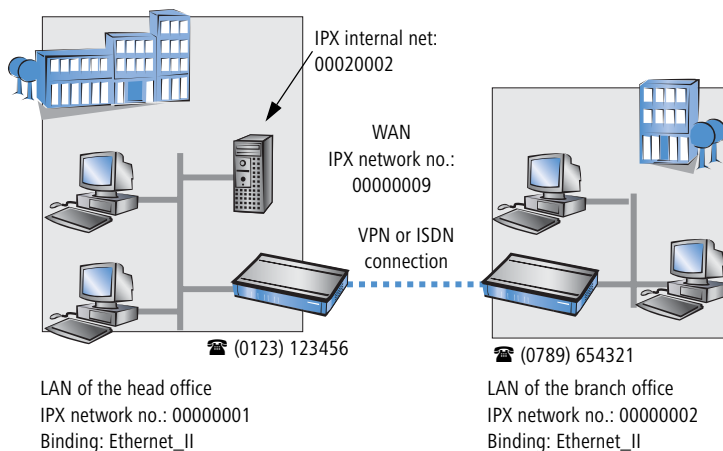
The coupling of IPX networks via VPN cannot be configured using the wizard. It can only be set up in the expert configuration. For details, please see the reference manual.

Coupling two typical IPX networks to form a WAN requires three IPX network numbers:

- ▶ for the LAN of the head office

- ▶ for the LAN of the branch office
- ▶ for the higher-level WAN

The IPX network numbers in the head and branch offices are specified to the respective remote sides.




The three required network numbers are designated as “External Network Numbers” by the IPX conventions. Like IP network addresses, they apply to an entire LAN segment. On the other hand, internal IPX numbers are used to address specific Novell servers in the LAN. All three specified network numbers must be distinct from one another and from all used internal IPX network numbers.

In addition, it may be necessary to enter the frame type (“binding”).

Specifying the IPX network number and binding used is not necessary if the remote network also contains a Novell server. It is only necessary to enter the network number for the WAN manually in this case.

5.1.4 Settings for NetBIOS routing

NetBIOS routing can be set up quickly: All that is required in addition to the information for the TCP/IP protocol used is the name of a Windows workgroup from in the router’s own LAN.

-  Remote Windows workgroups do not appear in the Windows Network Neighbourhood, but can only be contacted directly (e.g. via Find Computers).

5.2 Instructions for LANconfig


Perform the configuration on both routers, one at a time.

- 1 Launch the 'Connect two local area networks' wizard. Follow the wizard's instructions and enter the required information.



- 2 The wizard will return a message to indicate that it has all the information it needs. Close the wizard with **Finish**.
- 3 After finishing the configuration of both routers, you can test the network connection. Try to contact a computer in the remote LAN (e.g. with a ping). The LANCOM router should automatically set up a connection to the remote station and contact the required computer.

5.3 Instructions for WEBconfig

-  Under WEBconfig, the coupling of networks via VPN cannot be configured using the wizard. It can only be set up in the expert configuration. For details, please see the reference manual.

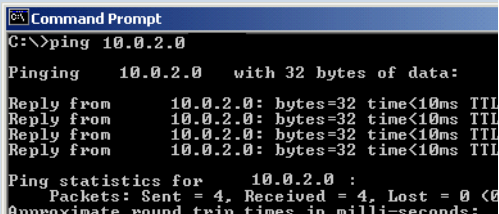
Perform the configuration on both routers, one at a time.

- ① From the main menu, launch the 'Connect two local area networks' wizard. Follow the wizard's instructions and enter the required information.
- ② The wizard will return a message to indicate that it has all the information it needs. Close the wizard with **Terminate**.
- ③ After finishing the configuration of both routers, you can test the network connection. Try to contact a computer in the remote LAN (e.g. with a ping). The LANCOM router should automatically set up a connection to the remote station and contact the required computer.

Ping – quick testing for TCP/IP connections

To test a TCP/IP connection, simply send a ping from your computer to a computer in the remote network. For more information on the 'ping' command, please see the documentation of your operating system.

IPX and NetBIOS connection can be tested by searching for a remote Novel Server or a computer in the remote Windows workgroup from your computer.



```
Command Prompt
C:\>ping 10.0.2.0
Pinging 10.0.2.0 with 32 bytes of data:
Reply from 10.0.2.0: bytes=32 time<10ms TTL
Reply from 10.0.2.0: bytes=32 time<10ms TTL
Reply from 10.0.2.0: bytes=32 time<10ms TTL
Reply from 10.0.2.0: bytes=32 time<10ms TTL
Ping statistics for 10.0.2.0 :
    Packets: Sent = 4, Received = 4, Lost = 0 (0%
Approximate round trip times in milli-seconds:
```

6 Providing dial-in access

Your LANCOM router supports dial-in connections to permit individual computers full access to your network. This service is also known as RAS (Remote Access Service). In principle, the RAS access can be realized in two different ways:

- ▶ **VPN:** For a RAS access via VPN, the connection between the LAN and the dial-in PC is established over a specially secured connection through the public Internet. The router in the LAN requires VPN support, the dial-in PC an access to the Internet and the LANCOM VPN Client.
- ▶ **ISDN:** For a RAS access via ISDN, a direct connection between the LAN and the dial-in PC is established over an ISDN dial-up connection. The router in the LAN requires an ISDN interface, the dial-up PC an ISDN adapter or an ISDN modem. The data transfer protocol is PPP. Therefore, the support of all usual devices and operating systems is ensured.

A setup wizard handles the configuration of the dial-in connection in the usual convenient manner.

Security aspects

You must, of course, protect your LAN against unauthorized access. A LANCOM router therefore offers a whole range of security mechanisms that can provide an outstanding level of protection:

- ▶ **VPN:** Network couplings via VPN transmit data by IPSec. The data are encrypted by AES, 3-DES, Blowfish or CAST encryption algorithms.
- ▶ **ISDN:** For network couplings via ISDN, the connection password, the checking of the ISDN number and the callback function ensure the security of the connection.



The ISDN call back function cannot be configured using the wizard. It can only be set up in the expert configuration. For details, please see the reference manual.

6.1 Which information is required?

The wizard will set up dial-up access for only one user. Please run the wizard again for each additional user.

6.1.1 General information

The following entries are required to set up a RAS connection. The first column indicates whether the information is required for a VPN and/or an ISDN connection. .

Coupling	Entry
VPN + ISDN	User name
VPN + ISDN	Password
VPN	Shared secret for encryption
VPN	Hide local stations for access to remote network (Extranet VPN)?
ISDN	Incoming number of remote station
ISDN	TCP/IP routing for access to remote network
ISDN	IPX routing for access to remote network
VPN + ISDN	IP addresses for the dial-up PCs: static or dynamic by address range (IP address pool)
VPN + ISDN	NetBIOS routing for access to remote network?
VPN + ISDN	Name of remote workgroup (NetBIOS only)

Notes to the individual values:

- ▶ **User name and password:** Users authenticate themselves with this information when dialling in.
- ▶ **Incoming number:** The LANCOM router uses the optional ISDN caller ID as an additional user authentication. This security function should not be used when users dial in from differing locations.



Please refer to chapter 'Linking two networks' →page 46 for advice about the other values required for the installation of a RAS access.

The ISDN calling line identity (CLI)

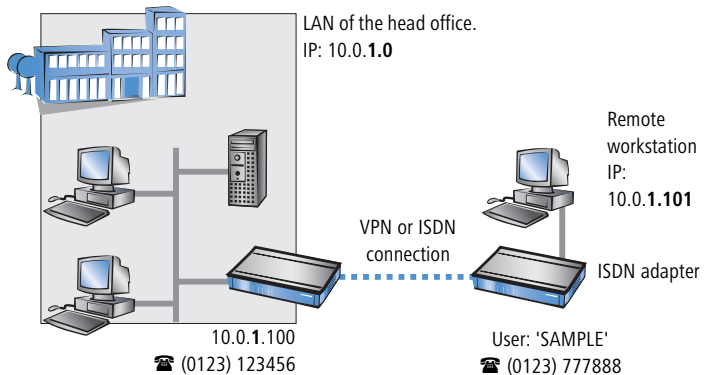
The ISDN caller ID—also known as CLI (**C**alling **L**ine **I**dentify)—this is the telephone number of the caller which is transmitted to the participant receiving the call. As a rule, it consists of the country and area codes and an MSN.

The CLI is well-suited for authentication purposes for two reasons: it is very difficult to manipulate, and the number is transferred free of charge via the ISDN control channel (D-channel).

▶ Chapter 6: Providing dial-in access

6.1.2 Settings for TCP/IP

Each active RAS user must be assigned an IP address when using the TCP/IP protocol.



This IP address can be permanently assigned when setting up a user. However, it is simpler to let the LANCOM router automatically assign free IP addresses to users when they dial in. In this case you only need to specify the IP address range that the LANCOM router should use for RAS users.

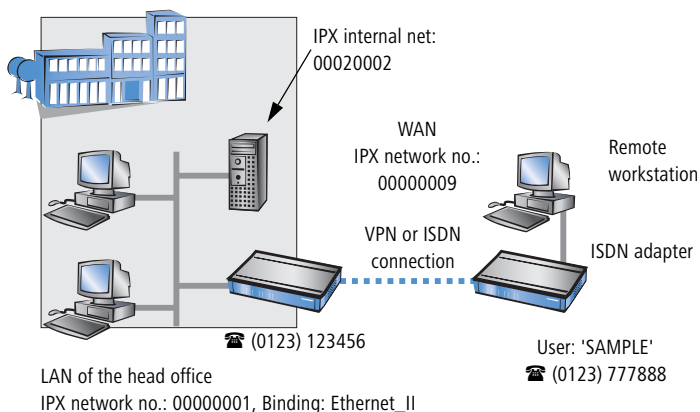
During both manual and automatic IP address assignment, please ensure that only free addresses from the address range of your local network are used. In our example, the IP address '10.0.1.101' will be assigned to the PC when connecting.

This IP address makes the computer a fully-fledged member of the LAN: with the appropriate rights, it can access all of the other devices in the LAN. The same applies in the other direction as well: computers in the LAN will also be able to access the remote machine.

6.1.3 Settings for IPX

Two IPX network numbers must be provided for remote access to an IPX network:

- ▶ the IPX network number of the head office
- ▶ an additional IPX network number for the higher-level WAN



The required network numbers are designated as “External Network Numbers”. Like IP network addresses, they apply to an entire LAN segment. On the other hand, internal IPX numbers are used to address specific Novell servers in the LAN. All three specified network numbers must be distinct from one another and from all used internal IPX network numbers.

In addition, it may be necessary to enter the frame type (“binding”).

Specifying the IPX network number and binding used is not necessary if the remote network also contains a Novell server. A network number for the WAN must also be entered manually in this case, however.

6.1.4 Settings for NetBIOS routing

All that is required to use NetBIOS is the name of a Windows workgroup from the router's own LAN.



The connection is not established automatically. The RAS user must manually establish a connection to the LANCOM router via Dial-Up Networking first. When connected, they can search for and access computers in the remote network (via **Find ▶ Computers**, not through the Network Neighbourhood).

6.2 Settings for the dial-in computer

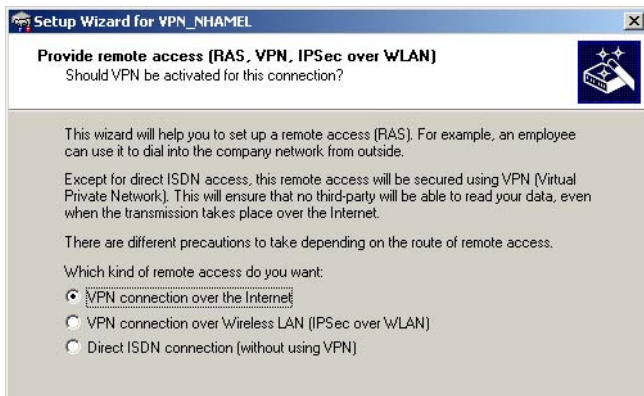
6.2.1 Dial-up via VPN

For dialing into a network via VPN a workstation requires:

- ▶ an Internet access
- ▶ a VPN client

LANCOM Systems offers a 30 days trial version of the LANCOM Advanced VPN Client on the LANCOM CD. A detailed description of the LANCOM Advanced VPN Client and a description of its installation can also be found on the CD.

For configuring a new profile, select the option 'LANCOM Advanced VPN Client' in the configuration wizard.



The wizard asks then for the values that have been defined during the installation of the RAS access in the LANCOM router.

6.2.2 Dial-up via ISDN

A number of settings must be configured on the dial-in computer. These are briefly listed here, based on a Windows computer:

- ▶ Dial-Up Networking (or another PPP client) must be correctly configured
- ▶ Network protocol (TCP/IP, IPX) installed and bound to the dial-up adapter
- ▶ New connection in Dial-Up Networking with the call number of the router
- ▶ Terminal adapter or ISDN card set to PPPHDLC
- ▶ PPP selected as the Dial-Up server type, 'Enable software compression' and 'Require data encryption' unchecked
- ▶ Select desired network protocols (TCP/IP, IPX)

- ▶ Additional TCP/IP settings:
 - ▷ Assignment of IP address and name server address enabled
 - ▷ 'IP header compression' disabled

These settings will permit a PC to dial into a remote LAN via ISDN and access its resources in the usual manner.


6.3 Instructions for LANconfig

- ① Launch the 'Provide Dial-In access (RAS)' wizard. Follow the wizard's instructions and enter the required information.



- ② The wizard will return a message to indicate that it has all the information it needs. Close the wizard with **Finish**.
- ③ Configure Dial-Up Networking access on the dial-in PC as described. Next, test the connection (see box 'Ping – quick testing for TCP/IP connections' →page 53).

6.4 Instructions for WEBconfig

 RAS access via VPN cannot be configured using the wizard under WEBconfig yet. It can only be set up in the expert configuration. For details, please refer to the reference manual.

- ④ From the main menu, launch the 'Connect two local networks' wizard. Follow the wizard's instructions and enter the required information.

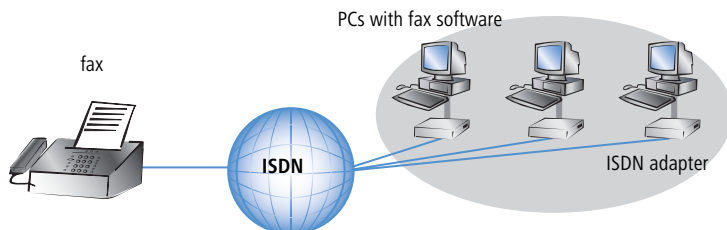
► *Chapter 6: Providing dial-in access*

- ⑤ Configure Dial-Up Networking access on the dial-in PC as described. Next, test the connection (see box 'Ping – quick testing for TCP/IP connections' →page 53).

7 Sending faxes with LANCAPI

LANCAPI from LANCOM Systems is a special version of the popular CAPI interface. CAPI (Common ISDN Application Programming Interface) establishes the connection between ISDN adapters and communications programs. For their part, these programs provide the computers with office communications functions such as a fax machine or answering machine.

The main advantages of using LANCAPI are economic. LANCAPI provides all Windows workstations integrated in the LAN (local-area network) with unlimited access to office communications functions such as fax machines, answering machines, online banking and eurofile transfer. All functions are supplied via the network without the necessity of additional hardware at each individual workstation, thus eliminating the costs of equipping the workstations with ISDN adapters or modems. All you need do is install the office communications software on the individual workstations.



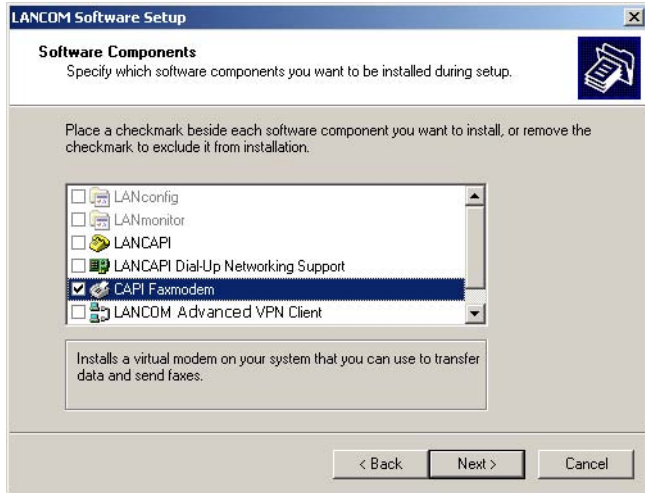
With LANCAPI by LANCOM it is possible to send faxes comfortably from your workstation PC, without having connected a fax device. To do so, you need to install several components:

- ▶ the **LANCAPI client**. It provides the connection between your workstation PC and the LANCAPI server.
- ▶ the **CAPI fax modem**. This tool simulates a fax device on your workstation PC.
- ▶ the **MS Windows fax service**. This is the interface between the fax applications and the virtual fax.

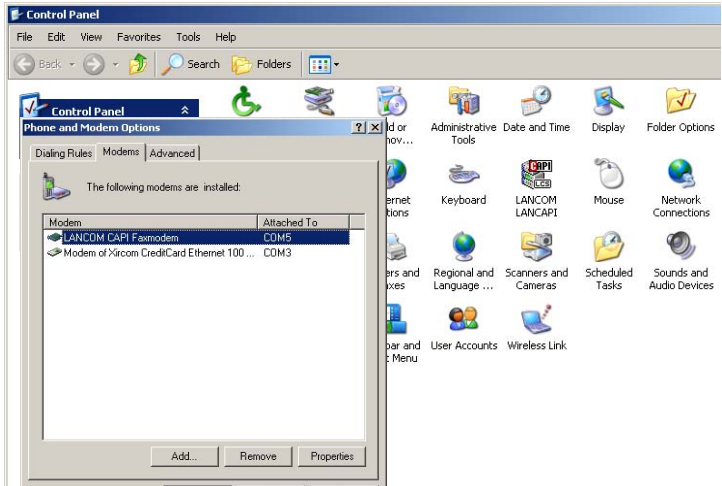
The installation of the LANCAPI client is described in the reference manual. This chapter shows the installation of LANCOM **CAPI fax modem** and MS Windows fax service.

7.1 Installation of the LANCOM CAPI fax modem

- ① Select the entry **Install LANCOM software** in the setup program of your LANCOM CD.
- ② Highlight the option **CAPI fax modem**, click **Next** and follow the instructions of the installation routine.

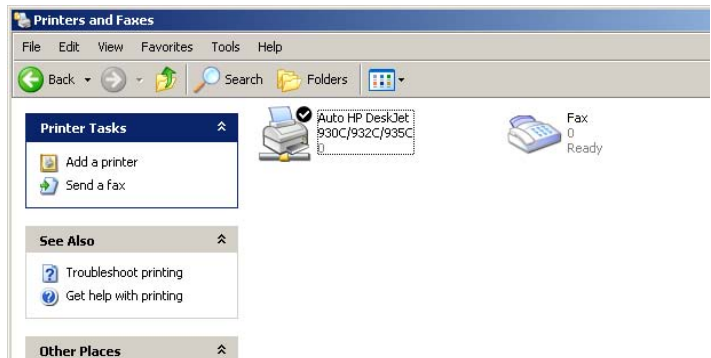


When the installation was successful, the LANCOM **CAPI fax modem** is entered into the **Phone and Modem Options** of the control panel.



7.2 Installation of the MS Windows fax service

- ① Select the option **Printers and Faxes** from the control panel.
- ② Select the option **Set up faxing** from the window 'Printers and Fax'. Follow, if necessary, the instructions of the installation tool. Into the recent window, an icon will appear for the newly installed fax printer.



► Chapter 7: Sending faxes with LANCAPI

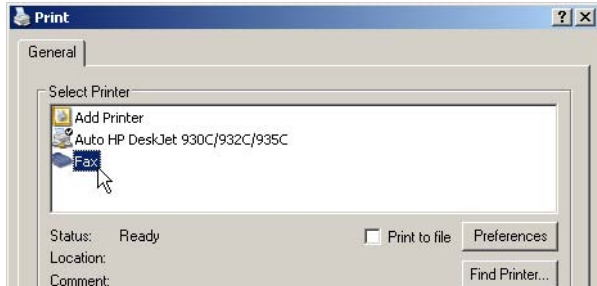
For checking the installation, click with the right mouse button on the fax-icon and select **Properties**. The LANCOM **CAPI fax modem should now be entered into register 'devices'**.

7.3 Sending a fax

After installing all required components, you have several possibilities to send a fax from your workstation PC. If you have already an existing data file, you can send it directly from your respective application. If you only want to send a short message, select the MS Windows fax service. You can use of course any other fax software alternatively.

7.3.1 Send a fax with any given office application

- ① Open as usual a document in your office application and select the menu item **File/Print**.
- ② Adjust the fax device as printer.

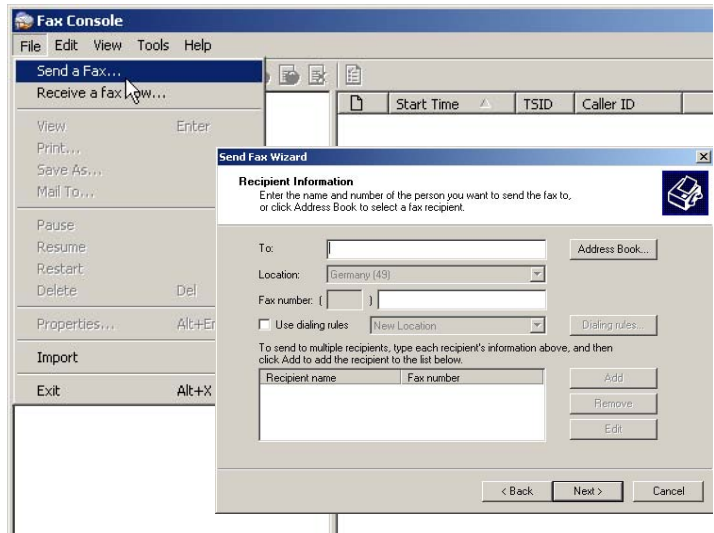


- ③ Click on OK. A wizard appears, that will guide you through the remaining sending process.

7.3.2 Send a fax with the MS Windows fax service

- ① Open the window 'Printers and Faxes' from the control panel.
- ② Double click with the left mouse button the icon of the fax device.

- ③ The fax client console will open. Select the menu item **Send a Fax**. A wizard will assist you through the remaining sending process.



8 Security settings

Your LANCOM router has numerous security functions. You find in this chapter all information you need for an optimal protection.

8.1 The security settings wizard

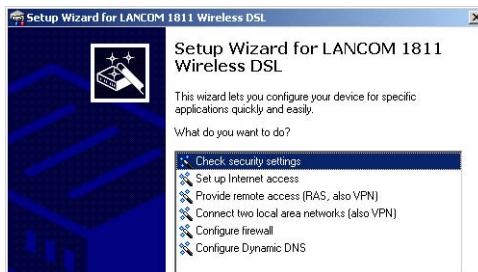
Access to the configuration of a device permits not only to read out critical information such as WEP key or Internet password. Rather, also the entire settings of the security functions (e.g. firewall) can be altered then. So an unauthorized configuration access endangers not only a single device, but the entire network.

Your LANCOM router has a password protection for the configuration access. This protection is already activated during the basic configuration by entering a password.

The device locks access to its configuration for a specified period of time after a certain number of failed log-in attempts. Both the number of failed attempts and the duration of the lock can be set as needed. By default, access is locked for a period of five minutes after the fifth failed log-in attempt.

8.1.1 Wizard for LANconfig

- 1 Mark your LANCOM router in the selection window. Select from the command bar **Extras ► Setup Wizard**.



- 2 Select in the selection menu the setup wizard **Control Security Settings** and confirm your choice with **Next**.
- 3 Enter your password in the following windows and select the allowed protocols for the configuration access from local and remote networks. Additionally, enter the MSN for remote configuration via ISDN.

- ④ In a next step parameters of the configuration lock like number of failed log-in attempts and the duration of the lock can be adjusted.
- ⑤ Now activate Stateful Inspection, ping-blocking and Stealth mode in the the firewall configuration.
- ⑥ The wizard will inform you when entries are complete. Complete the configuration with **Finish**.

8.1.2 Wizard for WEBconfig

Under WEBconfig you have the possibility to run the wizard **Security settings** to control and change the settings. The following values are handled:

- ▶ password for the device
- ▶ allowed protocols for the configuration access of local and remote networks
- ▶ the MSN for remote configuration via ISDN
- ▶ parameters of configuration lock (number of failed log-in attempts and duration of the lock)

8.2 The firewall wizard

The LANCOM router incorporates an effective protection of your LAN and WLAN when accessing the Internet by its Stateful Inspection firewall and its firewall filters. Basic idea of the Stateful Inspection firewall is that only self-initiated data transfer is considered allowable. All unasked accesses, which were not initiated from the local network, are inadmissible.

The firewall wizard assists you to create new firewall rules quickly and comfortably.

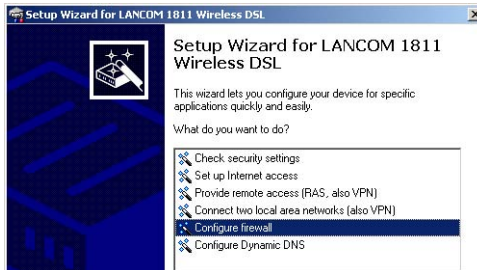
Please find further information about the firewall of your LANCOM router and about its configuration in the reference manual.

8.2.1 Wizard for LANconfig

The firewall wizard assists you to create new firewall rules quickly and comfortably .

► Chapter 8: Security settings

- 1 Mark your LANCOM router in the selection window. Select from the command bar **Extras ► Setup Wizard**.



- 2 Select in the selection menu the setup wizard **Configuring Firewall** and confirm your choice with **Next**.
- 3 In the following windows, select the services/protocols the rule should be related to. Then you define the source and destination stations for this rule and what actions will be executed when the rule will apply to a data packet.
- 4 You finally give a name to the new rule, activate it and define, whether further rules should be observed when the rule will apply to a data packet.
- 5 The wizard will inform you as soon as the entries are complete. Complete the configuration with **Finish**.

8.2.2 Configuration under WEBconfig

Under WEBconfig it is possible to check and modify all parameters related to the protection of the Internet access under **Configuration ► Firewall / QoS ► Rules ► Rule Table**.

8.3 The security checklist

The following checklist provides a comprehensive overview of all security settings for professionals. Most of the points on this checklist are no subject of concern in simple configurations, since these generally adequate security settings are already implemented during basic configuration and by the security wizard.



Detailed information on the security settings listed here can be found in the reference manual.

▶ **Have you assigned a password for the configuration?**

The simplest option for the protection of the configuration is the establishment of a password. As long as a password hasn't been set, anyone can change the configuration of the device. The field for entering the password is contained in LANconfig in the 'Management' configuration area on the 'Security' tab. It is particularly required to assign a password to the configuration if you want to allow remote configuration.

▶ **Have you permitted remote configuration?**

If you do not require remote configuration, then deactivate it. If you require remote configuration, then be sure to assign a password protection for the configuration (see previous section). The field for deactivating the remote configuration is also contained in LANconfig in the 'Management' configuration area on the 'Security' tab. Select here under 'Access rights - of remote networks' for all types of configuration the option 'not allowed'.

▶ **Have you provided the SNMP configuration with a password?**

Also protect the SNMP configuration with a password. The field for protection of the SNMP configuration with a password is also contained in LANconfig in the 'Management' configuration area on the 'Security' tab.

▶ **Have you activated the Firewall?**

The Stateful Inspection Firewall of the LANCOM ensures that your local network cannot be attacked from the outside. The Firewall can be enabled in LANconfig under 'Firewall/QoS' on the register card 'General'.

▶ **Do you make use of a 'Deny All' Firewall strategy?**

For maximum security and control you prevent at first any data transfer through the Firewall. Only those connections, which are explicitly desired have to be allowed by the a dedicated Firewall rule then. Thus 'Trojans' and certain Email viruses lose their communication way back. The Firewall rules are summarized in LANconfig under 'Firewall/QoS' on the register card 'Rules'.

▶ **Have you activated the IP masquerading?**

IP masquerading is the hiding place for all local computers for connection to the Internet. Only the router module of the unit and its IP address are visible on the Internet. The IP address can be fixed or assigned dynamically by the provider. The computers in the LAN then use the router as a gateway so that they themselves cannot be detected. The router separates Internet and intranet, as if by a wall. The use of IP masquerading is set

▶ *Chapter 8: Security settings*

individually for each route in the routing table. The routing table can be found in the LANconfig in the 'IP router' configuration section on the 'Routing' tab.

▶ **Have you excluded certain stations from access to the router?**

Access to the internal functions of the devices can be restricted using a special filter list. Internal functions in this case are configuration sessions via LANconfig, WEBconfig, Telnet or TFTP. This table is empty by default and so access to the router can therefore be obtained by TCP/IP using Telnet or TFTP from computers with any IP address. The filter is activated when the first IP address with its associated network mask is entered and from that point on only those IP addresses contained in this initial entry will be permitted to use the internal functions. The circle of authorized users can be expanded by inputting further entries. The filter entries can describe both individual computers and whole networks. The access list can be found in LANconfig in the 'TCP/IP' configuration section on the 'General' tab.

▶ **Have you closed critical ports with filters?**

The firewall filters of the LANCOM router devices offer filter functions for individual computers or entire networks. Source and target filters can be set for individual ports or for ranges of ports. In addition, individual protocols or any combinations of protocols (TCP/UDP/ICMP) can be filtered. It is particularly easy to set up the filters with LANconfig. The 'Rules' tab under 'Firewall/QoS' can assist you to define and change the filter rules.

▶ **Is your saved LANCOM router configuration stored in a safe place?**

Protect the saved configurations against unauthorized access in a safe place. A saved configuration could otherwise be loaded in another device by an unauthorized person, enabling, for example, the use of your Internet connections at your expense.

9 Troubleshooting

In this chapter, you will find suggestions and assistance for a few common difficulties.

9.1 No WAN connection is established

After start-up the router automatically attempts to connect to the access provider. During this process, the Online LED will blink green. If successful, the LED will switch over to steady green. If, however, the connection can't be established, the Online LED will light up red.



For LANCOM 800+ and LANCOM DSL/I-10+only. For LANCOM DSL/I-1611 Office please refer to the LED description ('LEDs for LANCOM DSL/I-1611 Office' →page 22).

The reason for this is usually one of the following:

Problems with the cabling?

Only the cable provided with your device should be used to connect to the WAN. This cable must be connected to the Ethernet port of your broadband access device. The WAN link LED must light green indicating the physical connection.

Has the correct transfer protocol been selected?

The transfer protocol is set along with the basic settings. The basic setup wizard will enter the correct settings for numerous DSL providers automatically. Only if your DSL provider is not listed, you will have to enter manually the protocol being used. In any case, the protocol that your DSL provider supplies you with should definitely work.

You can monitor and correct the protocol settings under:

Configuration tool	Run command
LANconfig	Management ▶ Interfaces ▶ Interface settings ▶ WAN Interface
WEBconfig	Expert Configuration ▶ Setup ▶ Interfaces ▶ WAN Interface

9.2 DSL data transfer is slow

The data transfer rate of an broadband (Internet) DSL connection is dependent upon numerous factors, most of which are outside of one's own sphere of influence. Important factors aside from the bandwidth of one's own Internet connection are the Internet connection and current load of the desired target. Numerous other factors involving the Internet itself can also influence the transfer rate.

Increasing the TCP/IP window size under Windows

If the actual transfer rate of a DSL connection is significantly below the fastest rate listed by the provider, there are only a few possible causes (apart from the above-mentioned external factors) which may involve one's own equipment.

One common problem occurs when large amounts of data are sent and received simultaneously with a Windows PC using an asynchronous connection. This can cause a severe decrease in download speed. The cause of this problem is what is known as the TCP/IP receive window size of the Windows operating system that is set to a value too small for asynchronous connections.

Instructions on how to increase the Windows size can be found in the Knowledge Base of the support section of the LANCOM web site (www.lancom.de).

9.3 Unwanted connections under Windows XP

Windows XP computers attempt to compare their clocks with a timeserver on the Internet at start-up. This is why when a Windows XP in the WLAN is started, a connection to the Internet is established by the LANCOM.

To resolve this issue, you can turn off the automatic time synchronization on the Windows XP computers under **Right mouse click on the time of day ▶ Properties ▶ Internet time.**

10 Appendix

10.1 Performance data and specifications

		LANCOM 800+	LANCOM DSL/I- 1611 Office	LANCOM DSL/I- 10+
Connections	Ethernet LAN	4 x RJ-45 Ethernet IEEE 802.3 (switch), 10/100Base-T auto-sensing, node/hub-autodetection	RJ-45 Ethernet IEEE 802.3 10/100Base-T, auto sensing, node/hub switch	3 x RJ-45 Ethernet IEEE 802.3 (switch), 10/100Base-T auto-sensing, node/hub-autodetection
	WAN		10Base-T	10/100Base-TX, auto sensing
	ISDN	ISDN S ₀ bus		
	Outband	serial V.24/V.28 port (8 pol. mini DIN)		
	Power supply	12V over external power adapter		
Operating modes	Multiprotocol router	IP router, IPX router, NAT/reverse NAT (IP masquerading) DHCP server incl. auto detection, DHCP client, DHCP relay server, DNS server, PPPoE client, PPTP client, NetBIOS proxy, DynDNS client		
	ISDN Gateway	RJ-45 ISDN S ₀ bus, point-to-point and point-to-multipoint configuration, I.430, (autosensing), optional leased-line support; D-channel 1TR6, DSS1 (Euro-ISDN); B-channel PPP (asynchronous/synchronous), X.75, HDLC, MLPPP for channel bundling, CAPI 2.0 via LANCAPI, Stac data compression		
Protocols	LAN	IP: ARP, Proxy ARP, IP, ICMP, UDP, TCP, TFTP, RIP 1, RIP 2, DHCP, DNS, SNMP, HTTP, HTTPS, BOOTP, NTP, NetBIOS, LANCAPI		
		IPX: RIP, SAP, IPX and SPX watchdogs, NetBIOS watchdogs		
	WAN		PPPoE, PPTP and Plain Ethernet	
Transfer rates (maximum)	LAN	100 Mbit/s, full-duplex mode		
Security		<p>Intrusion detection (IP spoofing, Log-in attempts, portscans), denial-of-service protection (fragmentation error, SYN flooding, automatic closing of ports/connections). DNS hitlists as well as wildcard filter (URL blocking). High availability by ISDN dial-backup for Internet access. Alerting by email, SNMP traps and SYSLOG.</p> <p>PAP, CHAP and MS-CHAP as PPP authentication mechanisms, password-protected configuration access for each interface, access control list (IP, MAC and protocol filter) for configuration access and <i>LANCAPI</i>, ISDN caller ID list. FirmSafe with 2 firmware versions for absolute secure software upgrades.</p>		

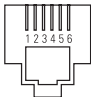
► Chapter 10: Appendix

		LANCOM 800+	LANCOM DSL/I- 1611 Office	LANCOM DSL/I- 10+
EN	Firewall	Stateful packet inspection, IP packet filter with port ranges; masking (NAT/PAT) of TCP, UDP, ICMP, FTP, PPTP, H.323, Net meeting, IRC and IPsec; DNS forwarding; inverse masking for IP services out of the intranet as e.g. web server; support of 2 local networks (LAN plus DMZ); DMZ with own IP address range without NA ; IP-QoS and bandwidth management / prioritisation, e.g. for VoIP		
	Management	LANtools (professional management software for Windows), WEBconfig (HTTP / HTTPS), Telnet, TFTP, SNMP V2 (MIB II, 802.11, 802.1D, 802.3, private MIB), RADIUS, syslog r emote maintenance via ISDN, DynDNS outband interface: command line interface		
	Housing	230 x 38 x 228 mm (W x H x D), metal case, connectors on the rear side		
	Standards	EU (CE certification: EN 55022, EN 55024, EN 60950)		
	Environment / temperature range	Temperature range 0°C to + 40°C at 80% max. humidity (non condensing)		
	Options	LANCOM Leased Line Option (No. 00789)		
		LANCOM Modem Adapter Kit for connecting modems (analogue or GSM) to the serial configuration interface (No. 110288)		
		LANCOM Service Option (4 years warranty, 24h product replacement) (No. 61401)		
			LANCOM VPN Option 25 channels for VPN in WAN (No. 60083)	

10.2 Contact assignment

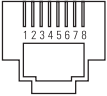
10.2.1 Ethernet WAN interface

6-pin RJ45 socket

Connector	Pin	IAE
	1	T+
	2	T-
	3	R+
	4	–
	5	–
	6	R-

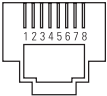
10.2.2 ISDN-S₀ interface

8-pin RJ45 socket, corresponding to ISO 8877, EN 60603-7

Connector	Pin	Line	IAE
	1	–	–
	2	–	–
	3	T+	2a
	4	R+	1a
	5	R-	1b
	6	T-	2b
	7	–	–
	8	–	–

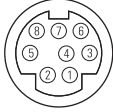
10.2.3 Ethernet interfaces 10/100Base-T

8-pin RJ45 socket, corresponding to ISO 8877, EN 60603-7

Connector	Pin	Line
	1	T+
	2	T-
	3	R+
	4	–
	5	–
	6	R-
	7	–
	8	–

10.2.4 Configuration interface (Outband)

8-pin mini-DIN socket

Connector	Pin	Line
	1	CTS
	2	RTS
	3	RxD
	4	RI
	5	TxD
	6	DSR
	7	DCD
	8	DTR
	U	GND

10.3 CE declaration of conformity

The CE declarations of conformity for LANCOM routers are available for download on the LANCOM web site (www.lancom.de).

Index

Numerics

10/100Base-TX	27
3-DES	46, 54

A

Accounting	34
ADSL	
Transfer rate	73
Transmission rates	10

ADSL modem	10
------------	----

AES	46, 54
-----	--------

Auth.	73
-------	----

Autosensing	28
-------------	----

B

Basic configuration	32
---------------------	----

Blowfish	46, 54
----------	--------

C

Callback	17
----------	----

Callback function	19, 46, 54
-------------------	------------

Calling Line Identity (CLI)	55
-----------------------------	----

CAPI interface	61
----------------	----

CAST	46, 54
------	--------

Channel bundling	73
------------------	----

charge lock	25
-------------	----

Common ISDN Application Programming Interface (CAPI)	61
--	----

Configuration access	36, 40
----------------------	--------

Configuration file	70
--------------------	----

Configuration interface	19
Connector cable	20

Configuration password	69
------------------------	----

Configuration port	27
--------------------	----

Configuration protection	19, 34
--------------------------	--------

Connect charge information	41
----------------------------	----

Connect charge protection	35, 36, 41
---------------------------	------------

Connect-charge budget	34
-----------------------	----

Connect-charge metering	34
-------------------------	----

Contact assignment	74
--------------------	----

Configuration interface	76
-------------------------	----

Ethernet interface	75
--------------------	----

Ethernet WAN interface	74
------------------------	----

ISDN-S ₀ interface	75
-------------------------------	----

LAN interface	75
---------------	----

Outband	76
---------	----

WAN interface	75
---------------	----

D

Data compression	73
------------------	----

Data frequencies	10
------------------	----

Declaration of conformity	76
---------------------------	----

Default gateway	41
-----------------	----

Denial-of-Service Protection	15
------------------------------	----

DHCP	41
------	----

DHCP server	18, 33, 34, 36, 39, 42
-------------	------------------------

Dialing prefix	34, 41
----------------	--------

Dial-up access	54
----------------	----

Dial-up adapter	58
-----------------	----

DNS	
-----	--

access to the remote LAN	50
--------------------------	----

DNS server	18, 41
------------	--------

Documentation	20
---------------	----

Domain	50
--------	----

Download	10
----------	----

downstream	10
------------	----

DSL	
-----	--

data transfer is too slow	72
---------------------------	----

provider	36, 40
----------	--------

transfer protocol	40
-------------------	----

DSL technologies	10
------------------	----

DSL transfer protocol	36
-----------------------	----

E

Encryption	46, 54
------------	--------

F

Fax	10
-----	----

► Index

Filter mechanisms	17	Internal-Net-Number	57
Firewall	14, 18, 70	IPX conventions	51
Firewall filter	67	IPX router	18
FirmSafe	19	Settings	50
Flat rate	44	ISDN	16
H		1TR6	73
Hardware installation	28	Basic configuration	41
I		caller ID	48, 55
ICMP	70	Connect charge information	36
Installation	20	connection	29
configuration port	29	Connector cable	20
DSL	28	D channel	55, 73
ISDN	28	data compression	44
LAN	28	Dial-in number	44
LANtools	29	DSS1	73
power adapter	29	dynamic channel bundling	44
Interconnection	46	MSN	34, 36, 41
Security aspects	46	NTBA	29
Internet access	16, 17, 43	password for connection	49
Authentication data	43	S ₀ port	27
Default gateway	43	ISDN connection	
DNS server	43	Basic settings	34
Flat rate	44	ISDN leased line option	19
IP address	43	ISDN modem	54
Netmask	43	ISDN PBX	34
Internet provider	43	ISDN S ₀ connection	18, 73
Intrusion Detection	14	L	
IP		LAN	
Filter	70	Connector cable	20
Lock ports	70	LAN to LAN coupling	16, 17, 18, 34, 46
IP address	33, 51	Required information	47
IP address of the LANCOM	28	LANCAPI	18, 30
IP masquerading	14, 16, 18, 69	LANCOM Service Option	19
IP router	18	LANCOM setup	30
IPSec	46, 54	LANCOM VPN Option	19
IPX	58	LANconfig	30, 35
Binding	51, 57	run setup wizards	45
External Network Number	51, 57	LANmonitor	30
Frame type	51	LANtools	

System preconditions	21	IPX	56
Leased line support	73	NetBIOS	57
Line management	17	Searching for Windows workgroups	57
M		Security aspects	54
MAC address filter	14, 19	Server	18
Minimum bandwidth	15	setup	54
MLPPP	73	specify MSN	34
MSN	55	TCP/IP	56
N		User name	55
NAT – see IP masquerading		Remote configuration	36, 40
NetBIOS	51	Remote configuration access	34
NetBIOS proxy	18	Remote configuration via ISDN	19
Netmask	33	Reset connect charge protection.	25
Network segment	28, 51	Reset switch	27
P		Resetting the configuration	28
Package contents	20	Restarting the device	28
Password	34, 36, 46, 54	Router	15
PAT – see IP masquerading		Router function	9
PBX	10	S	
Phone line	29	Searching for Windows workgroups	52
Ping	53	Security	
Plain Ethernet	43	Firewall wizard	67
Plain IP	43	Security settings wizard	66
Power adapter	20, 27	Security checklist	68
PPP	54, 73	Security features	16
PPP client	58	Security settings	71
PPPoE	43	Setting up access to the Internet	43
PPTP	43	SNMP	
Preshared Key		Protection of the configuration	69
Shared Secret	49	Software installation	29
Q		Splitter	10
Quality-of-Service	15	Stateful Inspection	14
R		Stateful Inspection Firewall	67
Remote Access Service (RAS)		Status displays	21
Configuring the dial-in computer	58	ISDN status	25
Enable software compression	58	LAN	26
Function	17	Online	24
		Power	24, 25
		WAN data	26

▶ *Index*

WAN status	26	U	
Switch	27	UDP	70
System preconditions	20	Upload	10
T		upstream	10
TCP	70	V	
TCP/IP	20, 58	Virtual Private Network (VPN)	16, 17
check connection	53	Voice frequencies	10
Settings	32, 36, 39	Voltage switch	27
Settings to PCs in the LAN	41	VPN client	58
Windows size	72	W	
TCP/IP configuration		WAN	
Automatic	39	Connector cable	20
fully automatic	32, 33	WAN connection	
manual	32, 33	problems establishing the connection	
TCP/IP filter	14, 18, 70	71	
TCP/IP router		WEBconfig	37
Settings	49	password	40
Telephone	10	Starting the wizards	38
Telephone answering device	10	System preconditions	21
Transfer protocol	71	Wide Area Network (WAN)	15