



LANCOM Systems

Overview of LANCOM software version 8.5
January 2011

LANCOM Software 8.5

General

Feature Notes 8.5

January 2011



The LANCOM operating system LCOS and the management system LCMS regularly provide **free** new functions to all current LANCOM routers, access points and gateways.

LCOS 8.5 brings more speed to network management: LANCOM QuickFinder is lightning-fast at finding devices in LANconfig, LANmonitor WLANmonitor and – especially for complex configurations – the intuitive search filter is the fastest way to find parameters, values and units.

Many automatic functions such as conditional load commands, the programmable Rollout Wizard, OCSP and LANCOM Software Update provide greater efficiency in network operations.

Read on for more on the most important new functions and improvements.



Page 2

LANCOM Software 8.5

Highlights

Feature Notes 8.5

January 2011



- **LANCOM QuickFinder** – Finds parameters, descriptions and values in LANconfig within seconds. And with the new configuration history you can easily navigate through all of the pages you viewed previously.
- **Layer-3 Tunneling** – Set up homogeneous IP networks for WLAN services that are independent of the network infrastructure and provide virtualization without the complexity of VLAN structures. WLAN Controllers can tunnel data from managed access points through IP infrastructures and allow users to roam anywhere in the wireless LAN while keeping the same IP number.
- **LANCOM Content Filter now available for HTTPS** – Now you can filter and block unwanted HTTPS requests with the LANCOM Content Filter. Also new: Twice as many supported users, a simplified override function, and enhanced performance.*

* Option subject to charge; not available for all LANCOM routers. Link to obtain a free time-limited demo license in LANconfig under "Activate software option ...".



Page 3

LANCOM Software 8.5

Further improvements

Feature Notes 8.5

January 2011



- **Automatic software updates** – LCMS updates software from myLANCOM; conditional load commands in LCOS
- **OCSP** – Support of the Online Certificate Status Protocol for ad hoc checks of certificate validity
- **Public Spot option for routers** – The LANCOM 1711+ VPN, 1721+ VPN, 7100 VPN and 9100 VPN can operate as Public Spot gateways (hotspot) for LANCOM access points
- **Programmable Rollout Wizard** – Scripting language generates custom Rollout Wizards for easy commissioning
- **Traces in the device menu** – Traces to analyze LANCOM devices can be triggered directly from the context menu of the device list in LANconfig



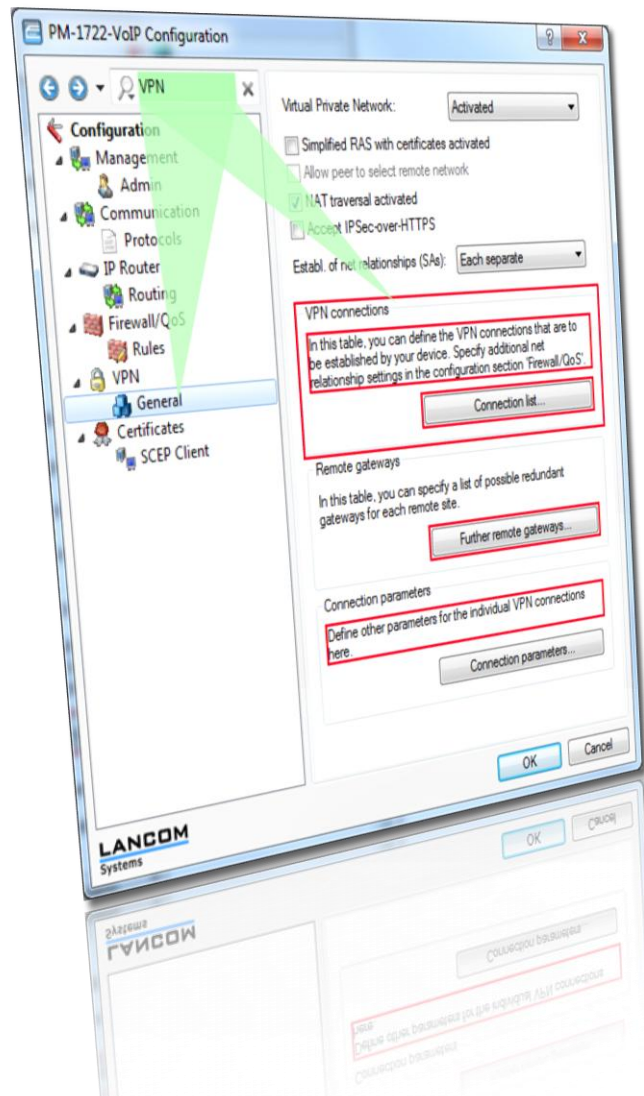
Page 4

LANCOM QuickFinder (1)

Finding descriptions, values and devices

Feature Notes 8.5

January 2011



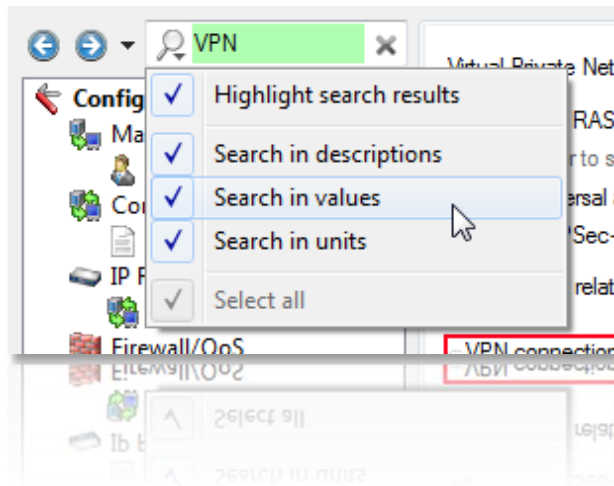
- **Search filter** now also in **device configurations**
- **Reduces the menu tree** to those pages with hits
- **Marks the findings** in a red frame on the configuration pages, even if the search term is located on a child page
- **Searches through descriptions** (e.g. parameter descriptors), but also entered **values** ("Where is 'INTRANET' entered?") and **devices**

LANCOM QuickFinder (2)

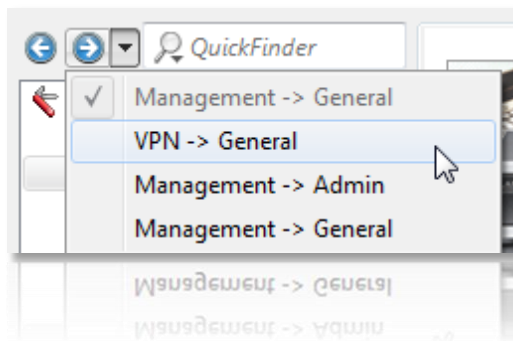
Easy, efficient searching

Feature Notes 8.5

January 2011



- **Narrowing down the search** in the configurations of LANCOM devices to descriptions, values and units



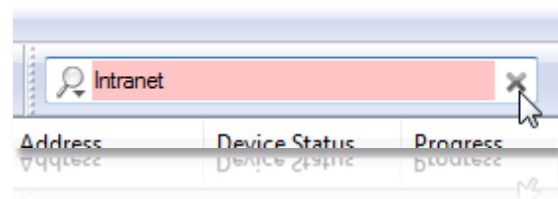
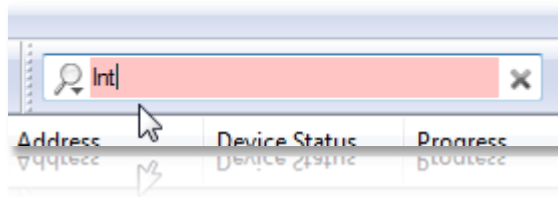
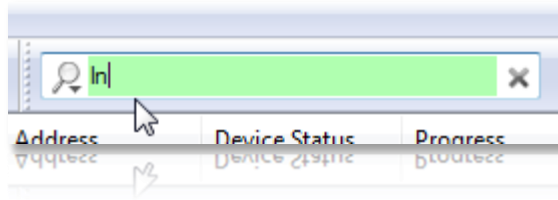
- **History** of the viewed configuration pages with **back/forwards** movement and a **selection list** to quickly jump between settings

LANCOM QuickFinder (3)

Easy, efficient searching

Feature Notes 8.5

January 2011



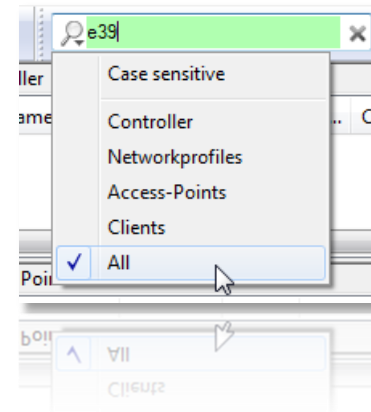
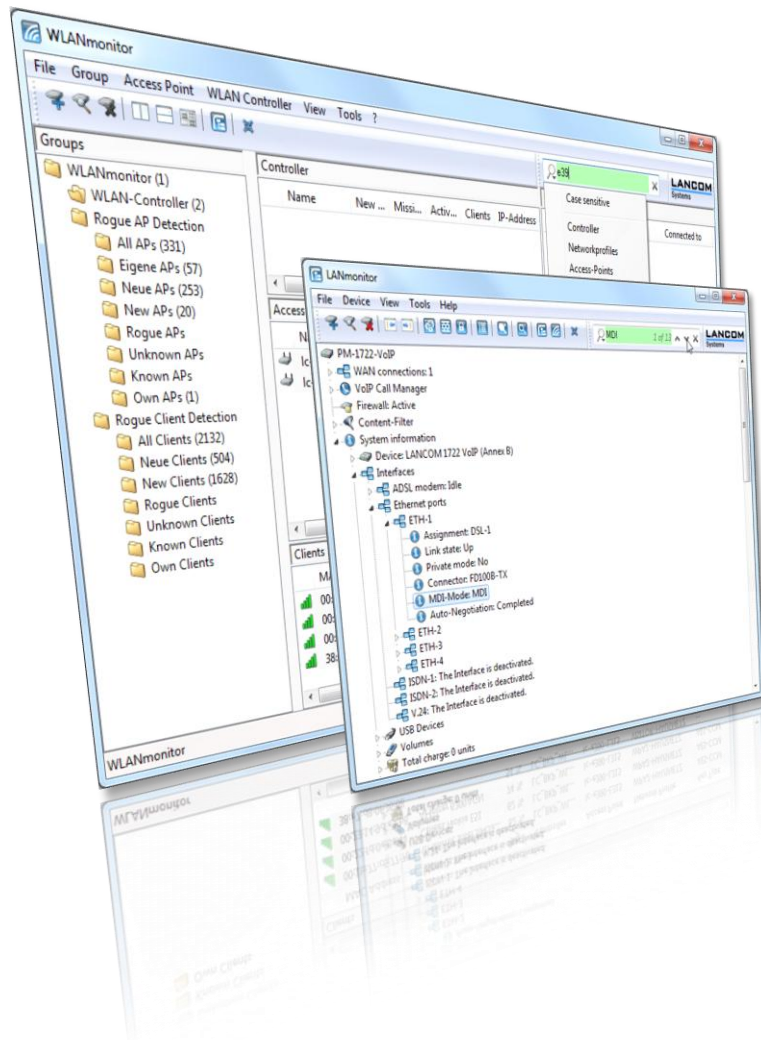
- **Intuitive and fast** operation by immediate adjustment of the view as characters are input
- **Color and sound signals** as soon as a no match is found
- **Reset the LANCOM QuickFinder with a single click** to see the full selection

LANCOM QuickFinder (4)

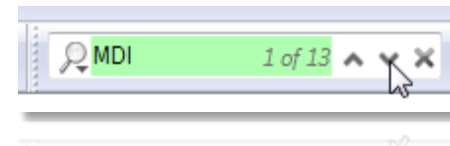
Searching in WLANmonitor and LANmonitor

Feature Notes 8.5

January 2011



- **WLANmonitor:** Fast location of controllers, network profiles, access points and clients – ideal for managed WLANs



- **LANmonitor:** Jump from hit to hit

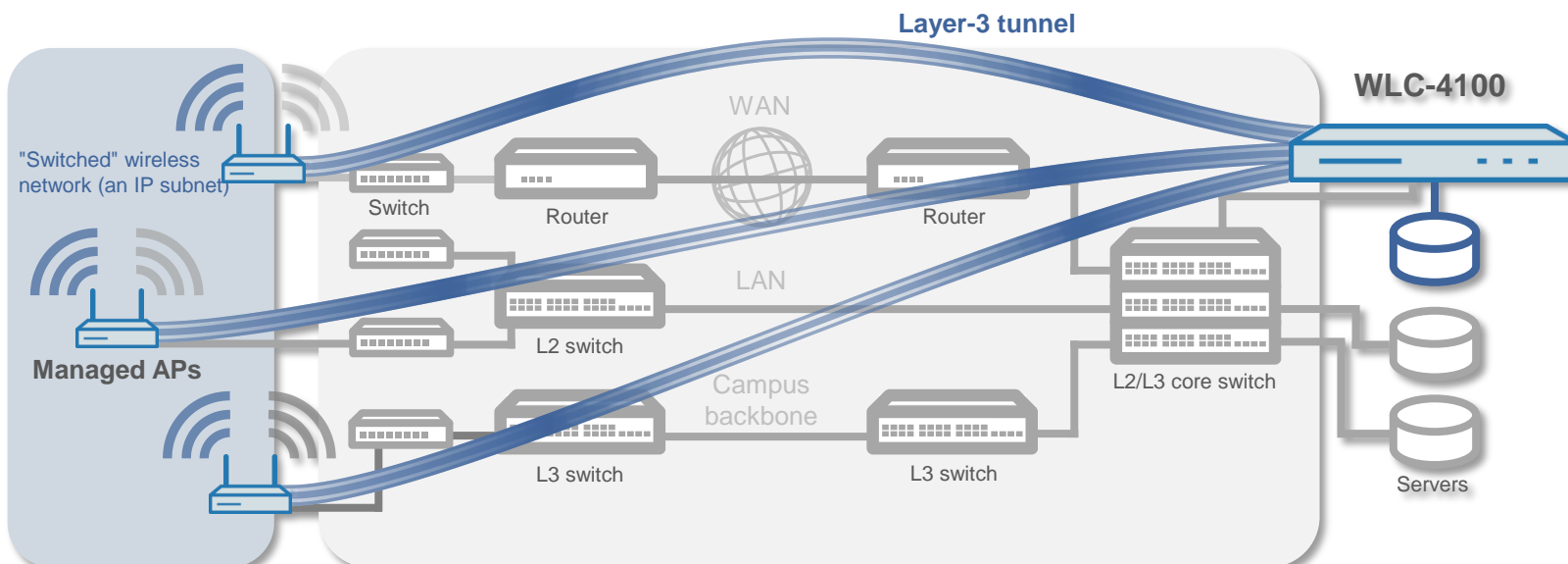
Layer-3 tunneling

Feature Notes 8.5

January 2011

Overcoming network boundaries for managed APs

- Instead of using VLANs, **layer-3 tunnels form an IP subnet**
- The **layer-3 tunnels transport layer-2 packets**, just as if the access points were "switched"
- A layer-3 tunnel can only be set up between **LANCOM access points** and **LANCOM Wireless LAN controllers**
- Layer-3 tunnels are suitable for the logical grouping of WLAN SSIDs, **where an upgrade to VLAN is impossible**
- Certain applications in the wireless LAN (e.g. Voice over WLAN) require **roaming without a change of IP number**



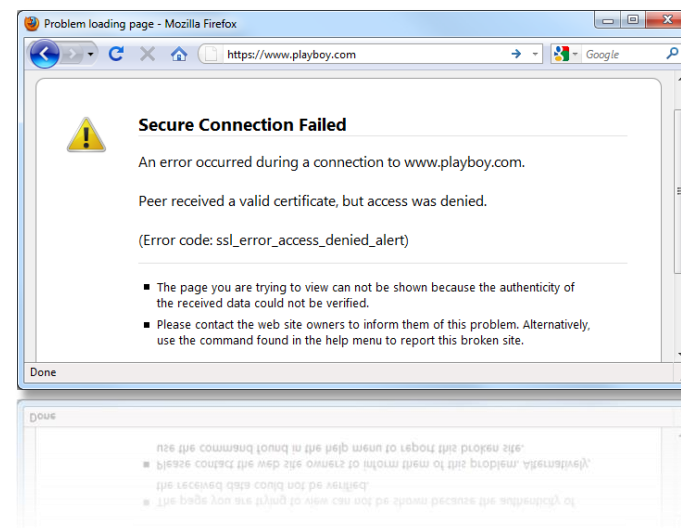
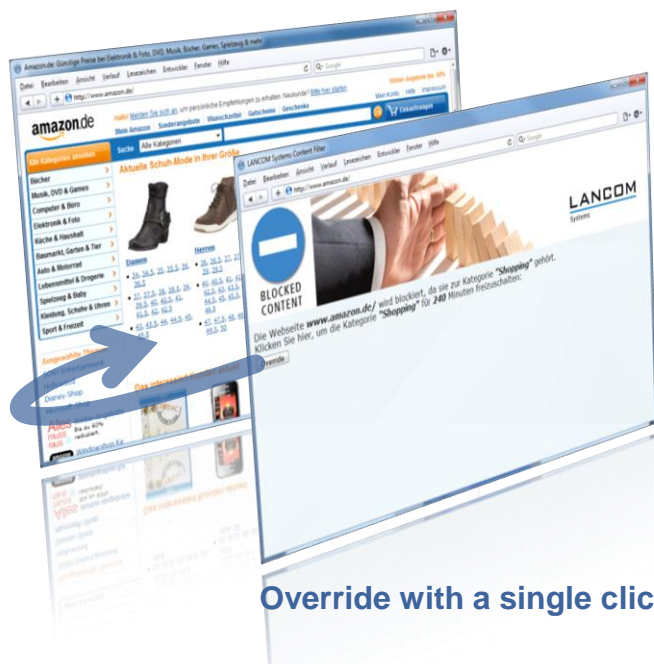
Content Filter option

Feature Notes 8.5

January 2011

Now for HTTPS, higher performance, doubled limits

- **NEW:** Content Filter can also **check HTTPS targets** and block them depending on the settings
- The **performance** was improved by optimizing the stacks and CPU-load utilization
- The **maximum number of users** on a device has been **doubled**



- **NEW:** Using **overrides** has been further simplified to a single click
- For further **information** and to request a demo license visit the LANCOM web site at

www.lancom.eu/contentfilter

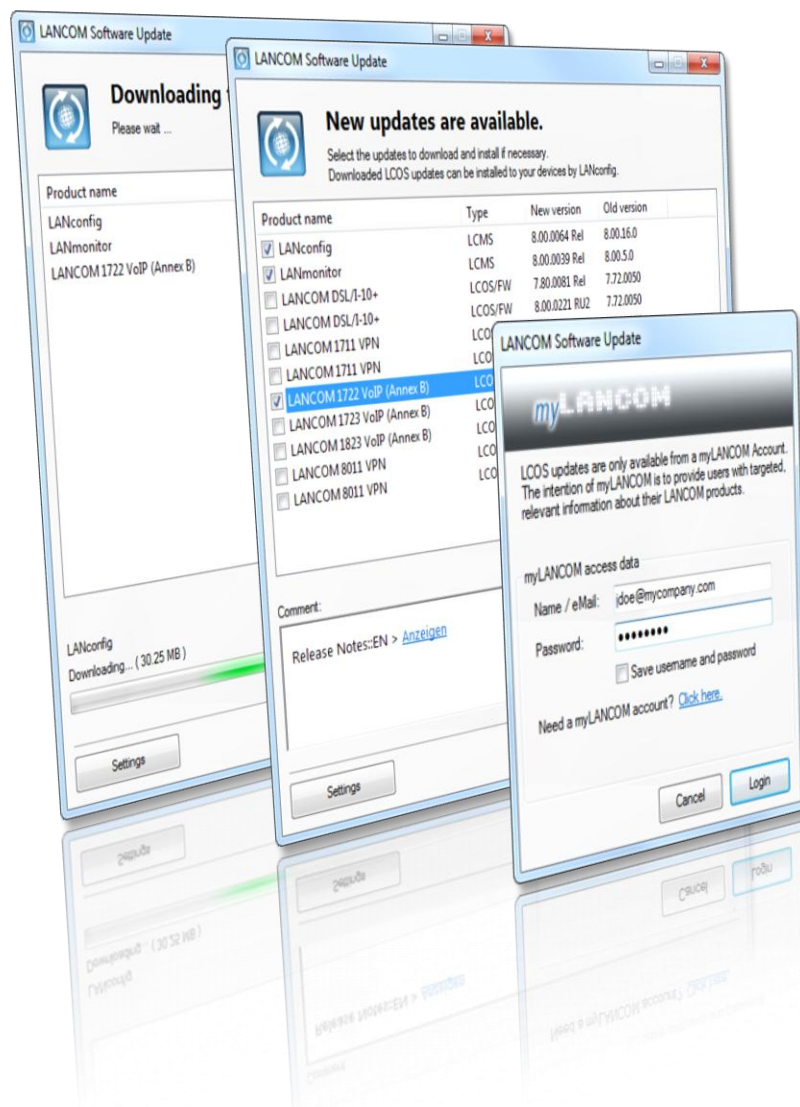
Page 10

Automated software updates (1)

Feature Notes 8.5

January 2011

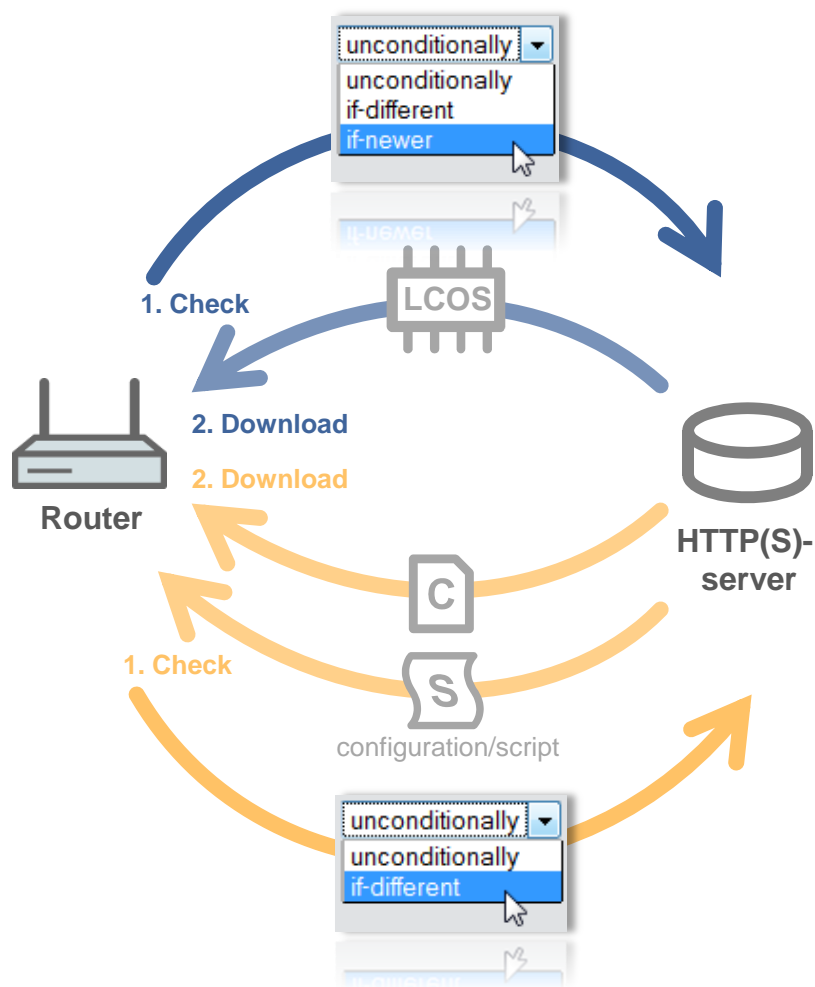
Software update directly from myLANCOM to LANconfig



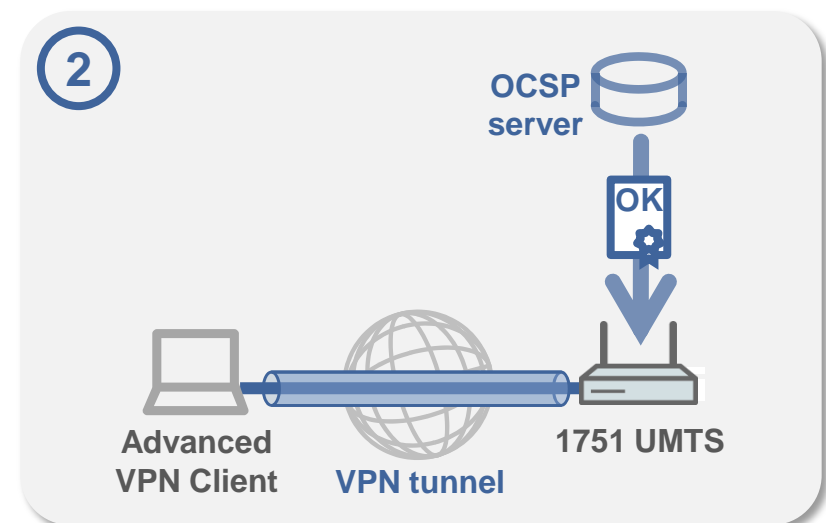
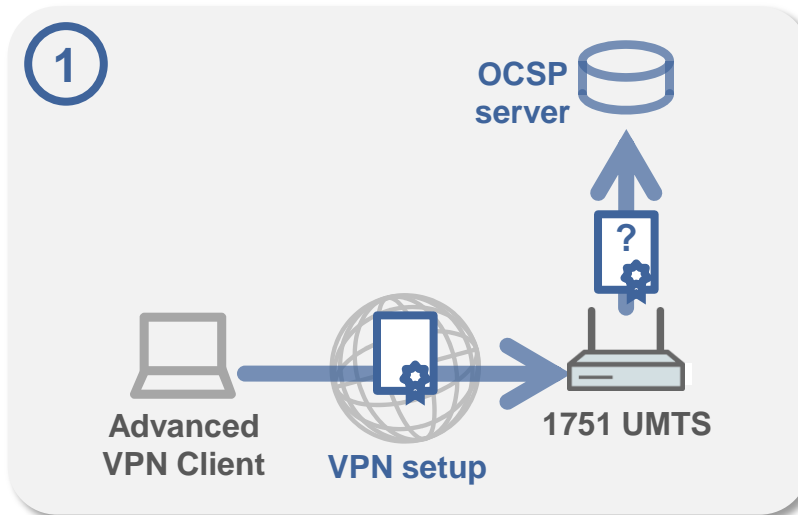
- Automatic search for new updates at myLANCOM
- Updating of LANconfig, LANmonitor and WLANmonitor even without a myLANCOM account
- Download of new LCOS versions for managed devices to a local firmware directory
- Individual selection of available updates and information
- Enable/disable LANCOM Software Update, set the test interval, optional download of Release Candidates

Automated software updates (2)

Conditional load commands



- **Enhancement** of the commands for loading firmware, configurations and scripts **to include conditions**
- Easy use in cron jobs **for automatic updates** when there are changes to firmware or a device configuration stored on a server
- **Settings** for LoadFirmware, LoadConfig and LoadScript are grouped **under "Automatic loading"**
- **Consolidation of the settings** for loading via TFTP, HTTP, HTTPS, and USB
- **Storage of default values** for minimum version (firmware only), condition, and the server URL – for easy use of commands

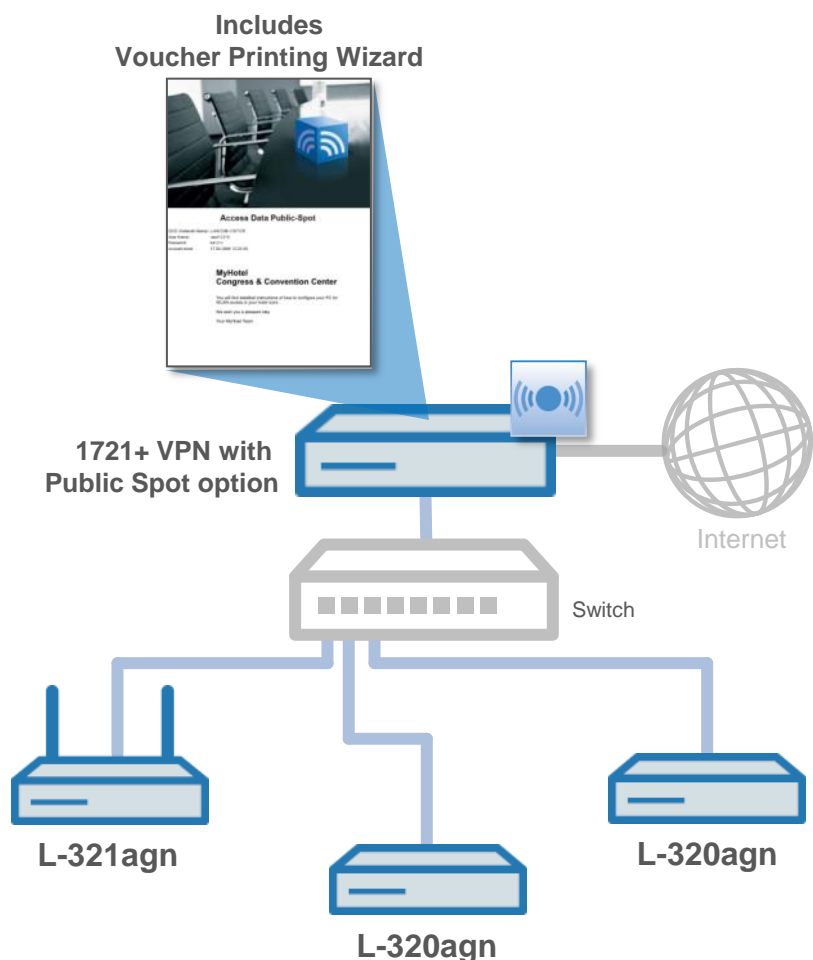


- Support of the **Online Certificate Status Protocol** for checking the validity of X.509 certificates
- **Alternative to CRLs** (Certificate Revocation Lists) for verification of certificates – accurate to the second
- More **economical**, especially for installations with **large numbers of certificates**, as no bulky CRL files have to be distributed

- **Revocations of certificates** now **faster**, because there is no need to wait for the CRL update cycle

Public Spot option for routers

VPN routers as Public Spot gateways for hotspots



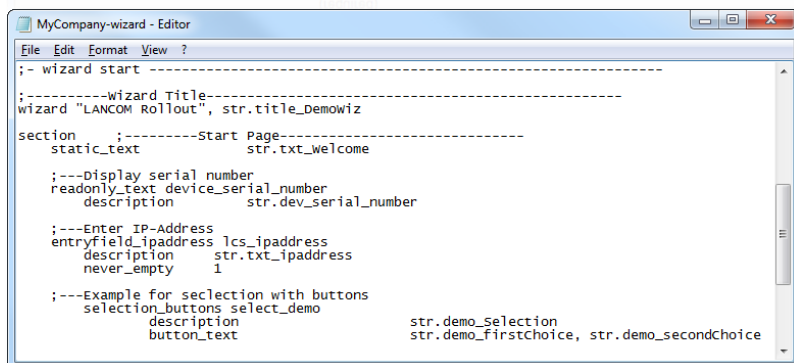
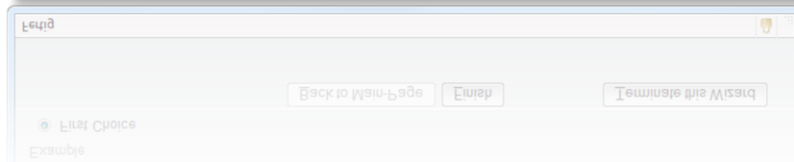
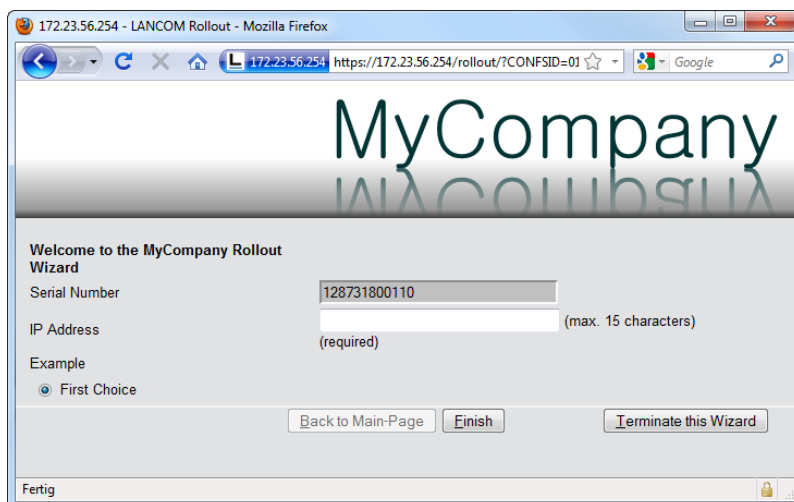
- **NEW:** Routers as gateways for hotspots with management of WLAN access accounts and Voucher Printing Wizard
- **Public Spot option** (max. 64 users) as of LCOS 8.5 also for:
 - LANCOM 1711+ VPN
 - LANCOM 1721+ VPN
- **WLC Public Spot option** (unlimited number of users) as of LCOS 8.5 also for:
 - LANCOM 7100 VPN
 - LANCOM 9100 VPN
- Suitable for installations with just a few access points that do not require management by wireless LAN controller
- Can also be combined with a Content Filter option on the router to the Internet to prevent access to illegal content

Programmable Rollout Wizard*

Scripting language for customized Wizards

Feature Notes 8.5

January 2011



- Scripting language for **creating custom Rollout Wizards**
- **Simplified commissioning** with project-specific requirements (only the required parameters are affected)
- Display of the Rollout Wizard in the web browser **in a custom design (branding)**
- The Rollout Wizard can be **saved to an alternative boot configuration**, so it is always available after reset
- Ideal **in combination with load commands** for the rollout of centrally stored firmwares and configurations:
 - Rollout Wizard configures the Internet access and the site identifier
 - Load commands obtain configurations from provisioning servers

* For LANCOM 1681V, 1711+ VPN, 1721+ VPN, 1751 UMTS, 1811n Wireless, 1821n Wireless only

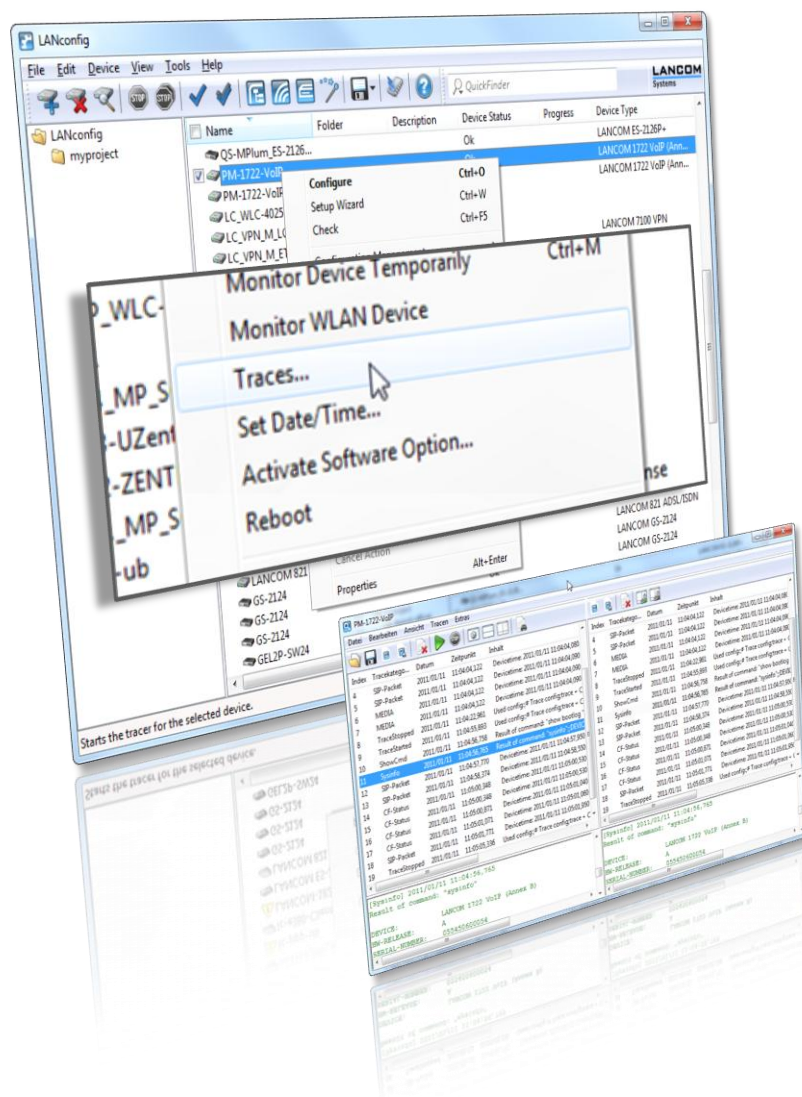
Page 15

Traces in the device menu

Easy start of traces from the device list

Feature Notes 8.5

January 2011



- **Powerful trace application with a graphical user interface** and Wizard as a component of LCMS
- **Structured display** of the output with a **detailed view**
- **Search and search filters** for finding events in extensive trace output
- **Comparison of trace output** in the split-view
- **Storage of trace output and support files** (configuration without passwords, Sysinfo and bootlog in one file)
- **Easy triggering** of traces **from the context menu** in the device list in LANconfig

We wish you every success with your LANCOM product and the new LCOS!

We look forward to your **praise and criticism, suggestions or questions:**

mylancom@lancom.de.

The latest information about Service and Support can be found on our Support flyer, our Internet site or from our **Knowledge Base:**

www.lancom-systems.de/eu/support.

If the manual and our current support themes in the Internet are of no help to you, then our **Support Hotline** is available to you in Germany on work days from 9:00 – 17:00h under

0900-1-LANCOM (= 0900-1-526266)

(1.24 € / Min. from German landlines).

Your LANCOM Systems Team

