



... connecting your business

LANCOM Systems

Overview of LANCOM software version 8.0
June 2010

LANCOM Software 8.0

General

Feature Notes 8.0

June 2010



The LANCOM operating system LCOS and the corresponding management tools regularly provide **free** new functions to all current LANCOM routers, access points and gateways.

LCOS 8.0 stands for innovative new security functions while improving usability at the same time.

Standing out as an example of this is the new Content Filter technology from LANCOM, which provides transparency for users and a conveniently easy configuration for administrators.

IPsec over HTTPS takes VPN to places that were impossible to reach until now; for example, to mobile clients in third-party networks behind routers which block IPsec, or in UMTS/3G networks with restrictions.

Read on for more on the most important new functions and improvements.



Page 2

LANCOM Software 8.0

Highlights

Feature Notes 8.0

June 2010



- **Content Filter** – Practical and tailor-made for enterprise scenarios; easy-to-operate and high-speed web-access control improves security and productivity for your company, and it conforms to legal requirements for the protection of minors.
- **IPsec over HTTPS** – With this innovative extension, SSL encapsulation-based VPN now works even where IPsec VPN formerly failed because of VPN filters. You don't have to change your configuration, VPN client or router.
- **LCMS Usability Upgrade** – Modernized versions of the highly praised LANCOM management software LANconfig and (W)LANmonitor. New look & feel.
- **USB setup** – LANCOM routers with USB interface can load firmware and configuration files from USB memory while in factory defaults.



Page 3

LANCOM Software 8.0

Further improvements

Feature Notes 8.0

June 2010

- **Alternative boot configuration** – Configurations can be stored as alternatives to the factory settings; useful for rollouts/commissioning
- **SSH client** – Management of third-party components from a LANCOM router via SSH, also by means of SSH login to the LANCOM
- **Load balancing now also for WLAN controllers** – Redundant connection of WLAN controllers to multiple WAN lines
- **Channel load display in WLC mode and WLANmonitor** – Display of channel load at the access points
- **RADIUS accounting for each WLAN SSID** – Allocation to SSIDs as configured from the WLAN controller
- **T-Entertain Wizard upgraded with IPTV configuration** – Configuration of IPTV, also for non-VDSL connections
- **Alternative DHCP server for DHCP forwarding** – Support of redundant upstream DHCP servers
- **Improved security of SSL/TLS** – Improved key negotiation with SSL/TLS as per RFC 5746
- **Basic HTTP/HTTPS server** – Provisioning of HTML pages or images, e. g. for Public Spot Option, stored on USB media (FAT)
- **DFS according to ETSI 301 893 v. 1.5** – Support for radar pattern recognition in WLAN as recommended from 07/01/2010 on



Page 4

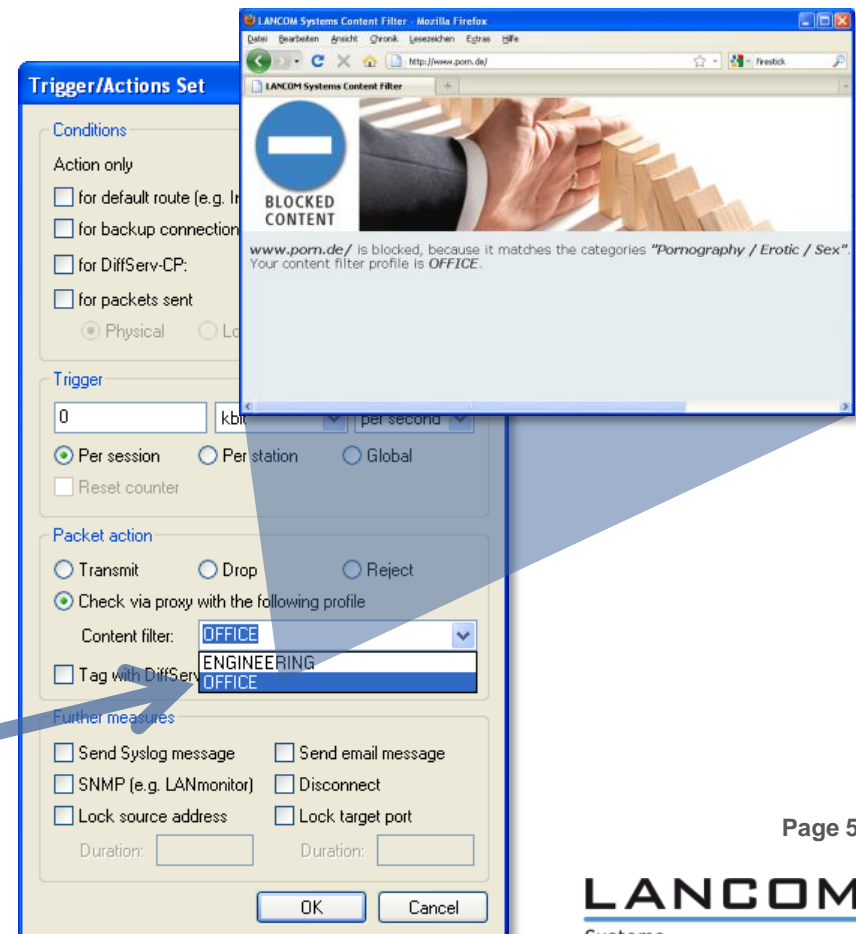
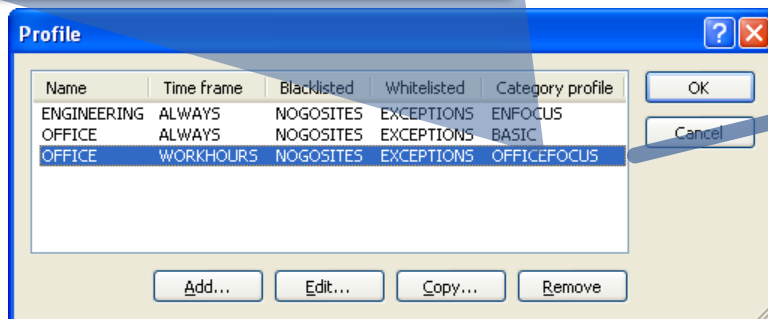
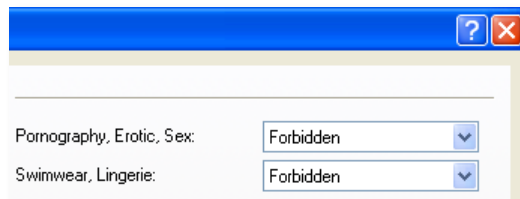
Content Filter Option (1)

Feature Notes 8.0

June 2010

Filter out undesirable web content when surfing

- Requested **URLs** (and IP addresses) can be sent to a data center **for categorization**
- URLs and classifications are stored in the **internal cache**
- **Flexible allocation** of Content Filter profiles by **means of firewall rules** (e.g. to differentiate between WAN/intranet content or user groups)
- **Convenient definition** of profiles and filter categories in **LANconfig** and with standard profiles



Page 5

Content Filter Option (2)

Profiles with time limits and different category profiles

- Profiles with **different category profiles** depending on the time, e.g. **for working times and leisure time**
- **Time limits** can be defined with **multiple entries**
- In case of overlap, prohibition takes priority
(Order: "**Forbidden**", "**Override**", "**Allowed**")

The screenshot displays the LANCOM Systems configuration interface. It features three main windows: 'Time frame - Edit Entry', 'Profile - Edit Entry', and 'Profile'. The 'Time frame - Edit Entry' window shows a 'Name' field with 'WORKHOURS' and 'Start time' set to '08 : 00' and 'Stop time' set to '12 : 30'. Below this, a 'Weekdays' section shows checkboxes for Monday, Tuesday, Wednesday, Thursday, Friday, Saturday, Sunday, and Holiday, with Monday through Friday checked. The 'Profile - Edit Entry' window shows a 'Name' field with 'OFFICE' and a 'Time frame' dropdown set to 'WORKHOURS'. Below this, a 'Refer to the desired black- and whitelist configuration.' section shows 'Blacklisted' set to 'NOGOSITES', 'Whitelisted' set to 'EXCEPTIONS', and 'Category profile' set to 'OFFICEFOCUS'. The 'Profile' window shows a table with columns: Name, Time frame, Blacklisted, Whitelisted, and Category profile. The table contains three rows: 'ENGINEERING' with 'ALWAYS', 'NOGOSITES', 'EXCEPTIONS', and 'ENFOCUS'; 'OFFICE' with 'ALWAYS', 'NOGOSITES', 'EXCEPTIONS', and 'BASIC'; and 'OFFICE' with 'WORKHOURS', 'NOGOSITES', 'EXCEPTIONS', and 'OFFICEFOCUS'. Below the 'Profile' window, a 'Categories' window shows a table with columns: Category profile, Pornography, Erotic, Sex, Swimwear, Lingerie, and Shopping. The table contains three rows: 'OFFICEFOCUS' with 'Forbidden', 'Forbidden', 'Forbidden', and 'Override'; 'BASIC' with 'Forbidden', 'Forbidden', 'Forbidden', and 'Override'; and 'ENFOCUS' with 'Forbidden', 'Forbidden', 'Forbidden', and 'Forbidden'. Arrows indicate the flow of configuration from the 'Time frame' and 'Categories' windows to the 'Profile' window.

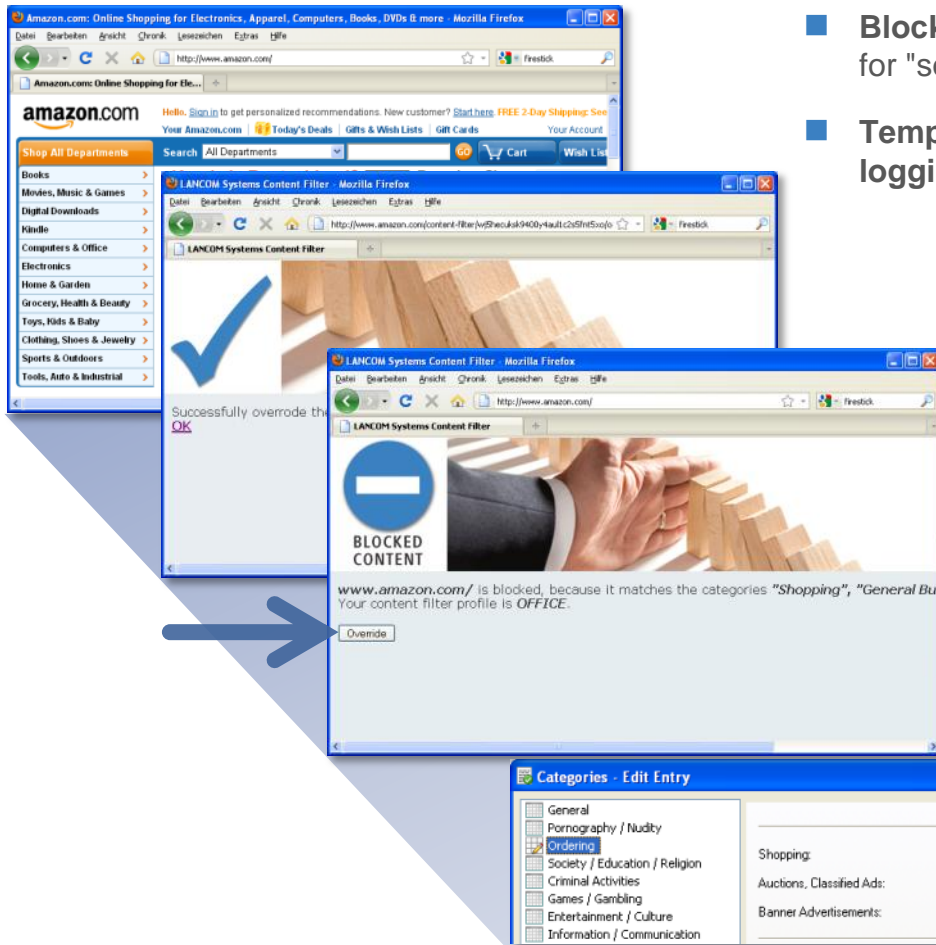
Name	Time frame	Blacklisted	Whitelisted	Category profile
ENGINEERING	ALWAYS	NOGOSITES	EXCEPTIONS	ENFOCUS
OFFICE	ALWAYS	NOGOSITES	EXCEPTIONS	BASIC
OFFICE	WORKHOURS	NOGOSITES	EXCEPTIONS	OFFICEFOCUS

Category profile	Pornography, Erotic, Sex	Swimwear, Lingerie	Shopping
OFFICEFOCUS	Forbidden	Forbidden	Override
BASIC	Forbidden	Forbidden	Override
ENFOCUS	Forbidden	Forbidden	Forbidden

Content Filter Option (3)

"Override" mechanism

- "Overrides" are a practical aid for necessary exceptions
- Blocks are intentionally "ignored" for "soft" categories
- Temporary unlocking for users and logging of the overrides



Content Filter Option (4) Availability

Feature Notes 8.0

June 2010

The image shows a screenshot of the LANCOM website's 'Demo licenses for options' page. The website header includes navigation links: Solutions | Products | Where to buy | Downloads | Service/Support | Press | Company | myLANCOM | Home. The main content area is titled 'Demo licenses for options' and contains instructions for activating a demo option. It includes a form with fields for 'Device serial number' (400054506000054), 'Device Type' (LANCOM 1722 VoIP (Annex B)), and 'Demo License Type'. Below the form is a 'Register License...' button. To the right of the form is a sidebar with the LANCOM logo, language options (English | International), a search bar, and a section for 'LANCOM 802.11n' with bullet points: 'Higher speed', 'Greater coverage', 'Less infrastructure', and 'Indoors and outdoors!'. Below the website screenshot is a 'Software-Option' dialog box. The dialog has a 'Register' tab and an 'Activate' tab. The 'Register' tab contains a 'License key' field with a 'Register License...' button. The 'Activate' tab contains an 'Activation key' field with the key 'CARR-J5ZT-CBMM-C5U2-7E14' and an 'OK' button. The dialog also includes instructions for using the activation key and a 'Cancel' button.

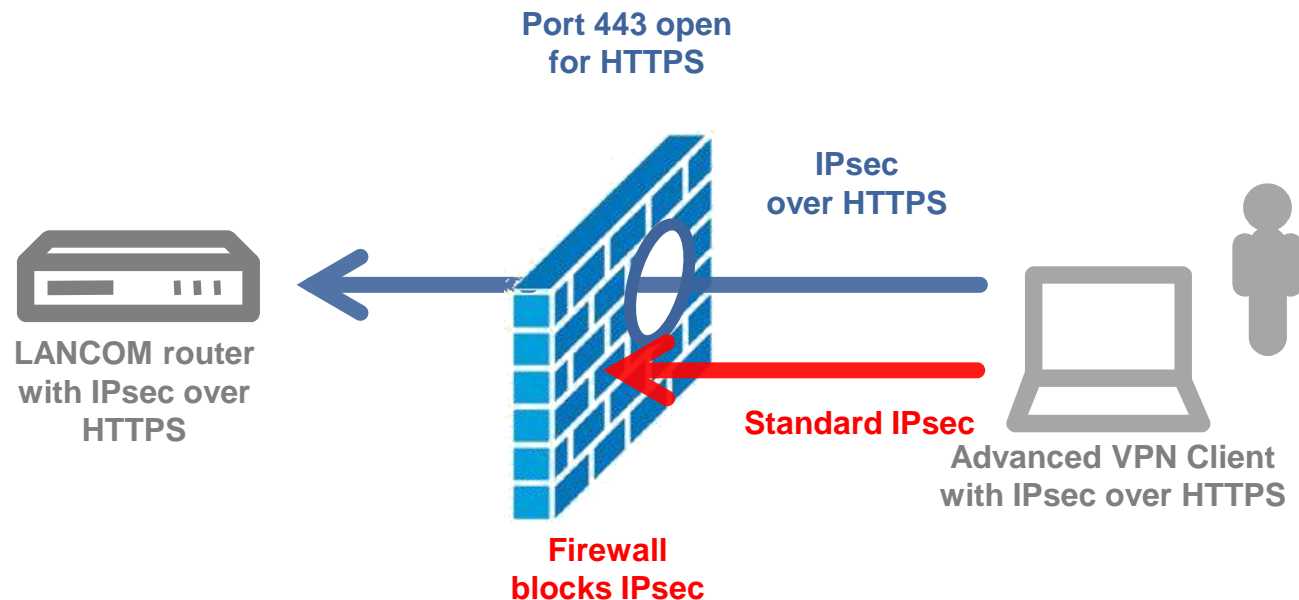
- The LANCOM **Content Filter** is a **software option** sold separately for LANCOM routers, gateways and WLAN controllers
- Software option **suitable for most current router models but not for all** (compare product web page)
- **Cost-free, time-limited demo license** to test the Content Filter
- Automated process to obtain a **demo license with a button in LANconfig** at „Activate Software Option...“
- Further **information and request for a demo license** on the LANCOM website at

www.lancom.eu/contentfilter

IPsec over HTTPS (1)

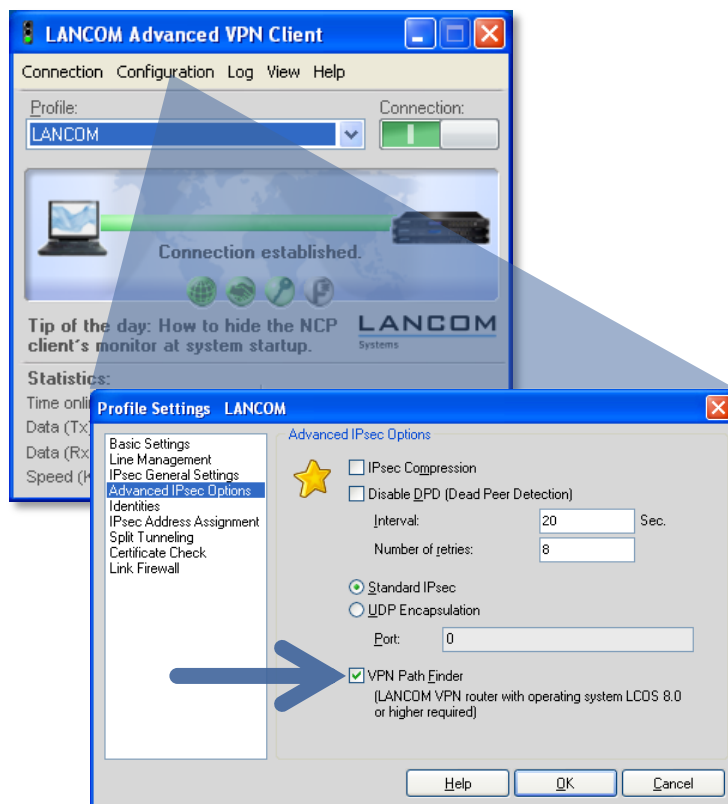
SSL encapsulation for IPsec

- **SSL encapsulation of IPsec** traffic and transport via TCP over port 443 (as with HTTPS)
- **Overcomes NAT gateways and firewalls** that block IPsec, such as with UMTS/3G providers, hotspots, etc.
- Works for **client-to-site** connections (LANCOM Advanced VPN Client to LANCOM VPN routers)
- Also works **site-to-site** (from LANCOM router to LANCOM router)



IPsec over HTTPS (2)

Ideal for mobile applications



- **Easy setup** of the LANCOM Advanced VPN Client by selecting "IPsec over HTTPS"
- **Automatic detection and switching** between plain IPsec and IPsec over HTTPS:
 - The initial **connection attempt is with IPsec** (less overhead)
 - If a standard IPsec connection **cannot** be established, then the Advanced VPN Client reverts to **IPsec over HTTPS** technology
- Available as of **version 2.22** of the LANCOM Advanced VPN Client (free update from version 2.2)

LCMS modernized

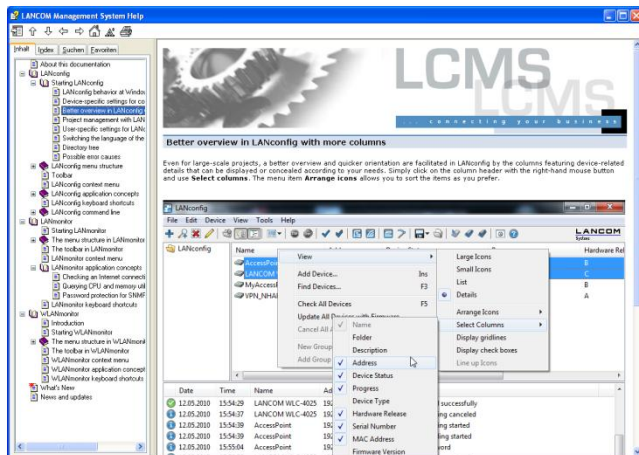
New icons

Feature Notes 8.0

June 2010



- All icons have been completely reworked in LANconfig, LAN/WLANmonitor and Trace
- High-resolution icons with more colors for a **more intuitive display** and conformity with corporate-design
- **Modernization** that does justice to current screen resolutions and user experience with other applications



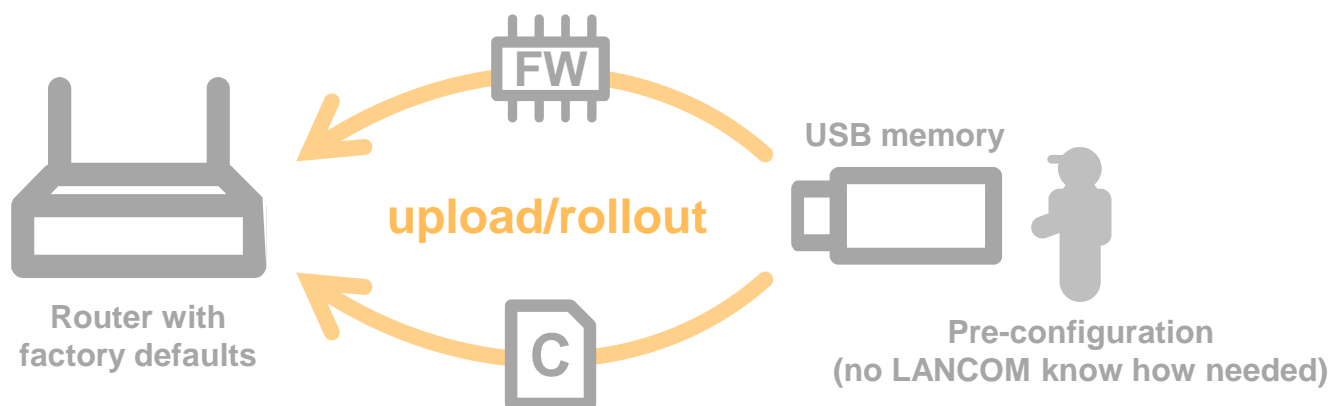
- **Application help** for LANconfig, LAN/WLANmonitor with extensive explanations
- **How-To chapters** covering typical administrative tasks and hints for configuration
- **Directory, index and search** for extensive reading of topics related or quick help for specific operations

Page 11

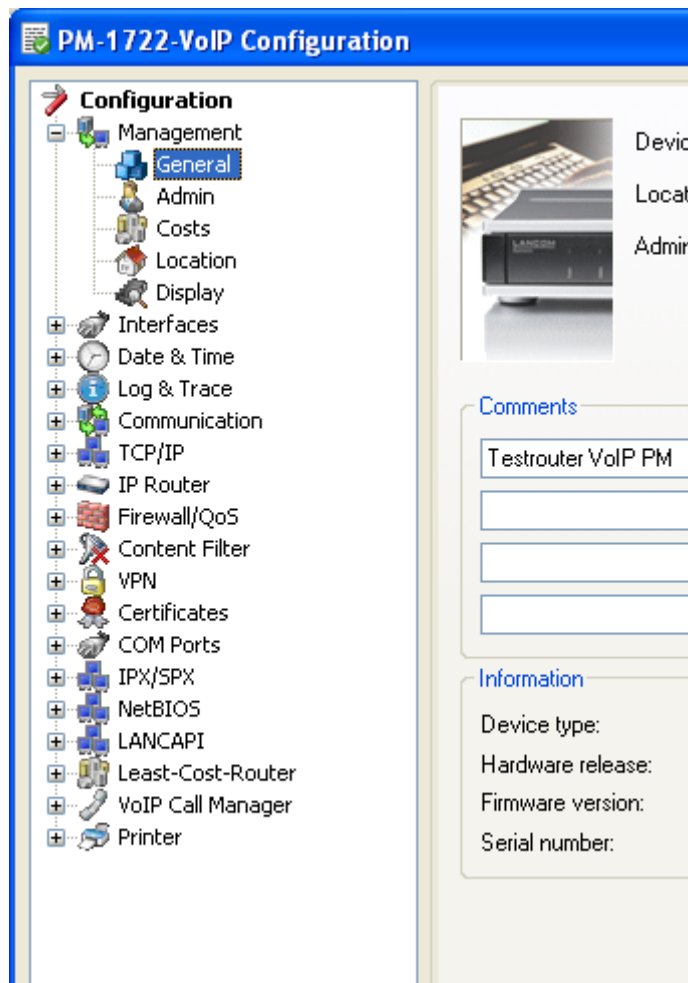
USB setup

Upload of configuration and firmware from USB memory

- With LCOS 8.0 all routers with USB interface **can be configured automatically by simply inserting a USB memory***
- A router with factory defaults **checks for** appropriate **firmware** or **configuration** files on the USB memory
- Applicable firmware files are automatically uploaded when they are newer than the firmware versions in the device
- The USB setup mechanism **can be used for updates during operation as well** (switchable)



Tree view for fast access to the configuration pages



- **Tree view** with the same icons and structure as in WEBconfig
- **Fast access** to configuration pages, without any lists or tabs
- Automatic **compression of sections** when another page is selected

LANconfig

Intelligent password field

The diagram illustrates the evolution of the password field in LANconfig through four stages, connected by downward arrows:

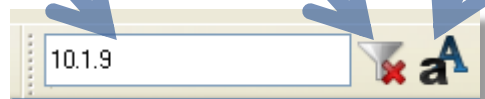
- Stage 1:** A single input field with a masked password (represented by a dot) and a 'Show' checkbox. A 'Generate password' button is below the field.
- Stage 2:** The password is now visible as 'secret'. The 'Show' checkbox is checked. The 'Generate password' button remains.
- Stage 3:** The password is a complex generated string: 'JP;nx6weG/2&'. The 'Show' checkbox is checked. The 'Generate password' button remains.
- Stage 4:** The password is masked again with dots. A new 'Repeat:' field is added below the main field. The 'Show' checkbox is unchecked. A large blue arrow points from the 'Show' checkbox in Stage 3 to the 'Show' checkbox in Stage 4.

- Single field for password entry with the option of **making the password visible** (e.g. to check the passwords as you enter them)
- If passwords are displayed, it is impossible to "steal" the password by copy & paste or with password sniffers (**increased security**)
- To motivate customers to use higher security, it is also possible to **automatically generate a password** (where this makes sense)
- If a password is renewed or changed, a **confirmation field** is displayed **immediately after** entering it – no additional window opens up after closing the dialog (so speeding things up for professionals)

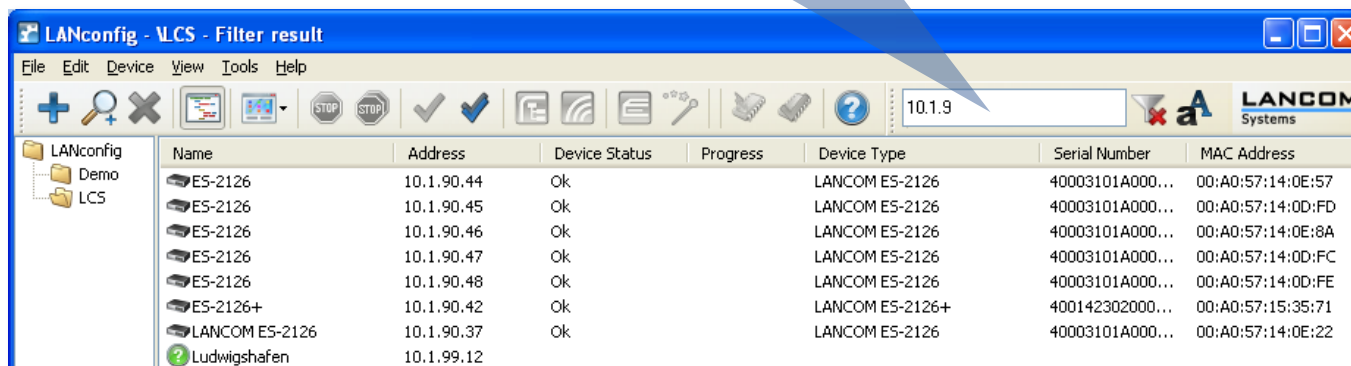
Search
pattern

Discard
filter

Filter case-
sensitive



- Searches **any match** of the search pattern in device properties
- Has **immediate impact** on the folder view with each character typed in
- Searches the currently **selected folder** only
- Can be **combined with 'flat view mode'** to display all matches in selected and subsequent folders
- Force **exact matching** with capitalization symbol
- Discard filter **with one click**



Alternative boot configurations

Customer-specific standard settings

- LANCOM routers and access points can be programmed with persistent configurations (however many times the device is rebooted or reset) that contain **customer-specific standard settings for the boot procedure**
- By storing a configuration to **memory space "1"**, the LANCOM factory settings will be "overwritten" **with customer-specific standard settings**
- When resetting, a **short press (more than 5 seconds)** of the reset button initiates the
 - activation of **customer-specific standard settings**, assuming that a corresponding configuration has been saved to memory space "1",
 - **otherwise** (if memory space "1" is empty) the **LANCOM factory settings** are loaded as usual
- Additionally/alternatively a **rollout configuration** can be stored in memory space „2“ as well as a **standard certificate** for authentication (more details in reference manual)



We wish you every success with your LANCOM product and the new LCOS!

We look forward to your **praise and criticism, suggestions or questions:**

mylancom@lancom.de.

The latest information about Service and Support can be found on our Support flyer, our Internet site or from our **Knowledge Base:**

www.lancom-systems.eu/support.

If the manual and our current support themes in the Internet are of no help to you, then our **Support Hotline** is available to you in Germany on work days from 9:00 – 17:00h

0900-1-LANCOM (= 0900-1-526266)

(1.24 €/min. from German landlines).

Your LANCOM Systems Team

