



**LANCOM Software Version 6.10**

**May 2006**

© 2006, LANCOM Systems GmbH  
[www.lancom-systems.com](http://www.lancom-systems.com)

**LCOS 6.10**  
[LANCOM OPERATING SYSTEM]

**LANCOM**  
Systems

# Highlights

## **LCOS** 6.10

[LANCOM OPERATING SYSTEM]

### VoIP

- ISDN point-to-point connection
- SIP trunking (ITU Q.1912)
- SIP remote gateway
- VLAN support with automatic layer 2/layer 3 tagging
- Plus Double the number of subscribers to 4 or 32 subscribers, respectively

### WLAN

- Quality of Service according to 802.11e / WME
- Integrated RADIUS server
- Fast 802.1x roaming with PMK caching & pre-authentication

### VPN

- Certificate revocation lists
- RAS user template

### Performance

- New VPN and routing engine with even higher throughput

### UMTS

- Support of HSPDA cards Option GT Fusion+ and Option GT Max (e.g. "T-Mobile Web'n'Walk")

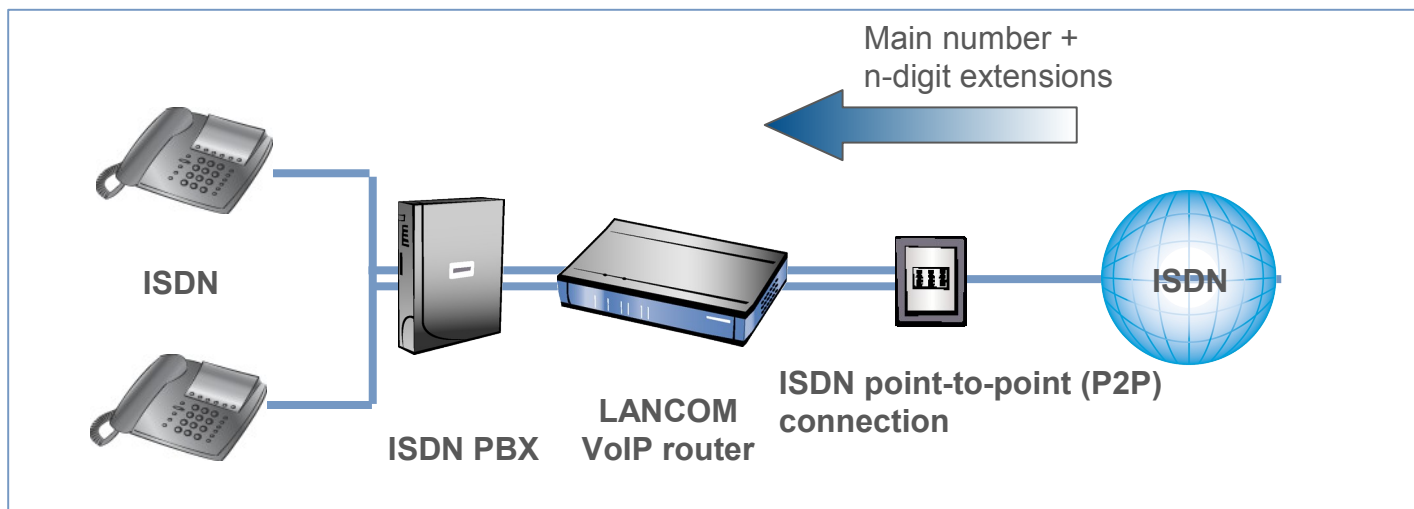
### General

- Network capabilities for USB printers (RAW / LPR)
- ISDN site verification with B/D channel
- ISDN leased-line support for all devices



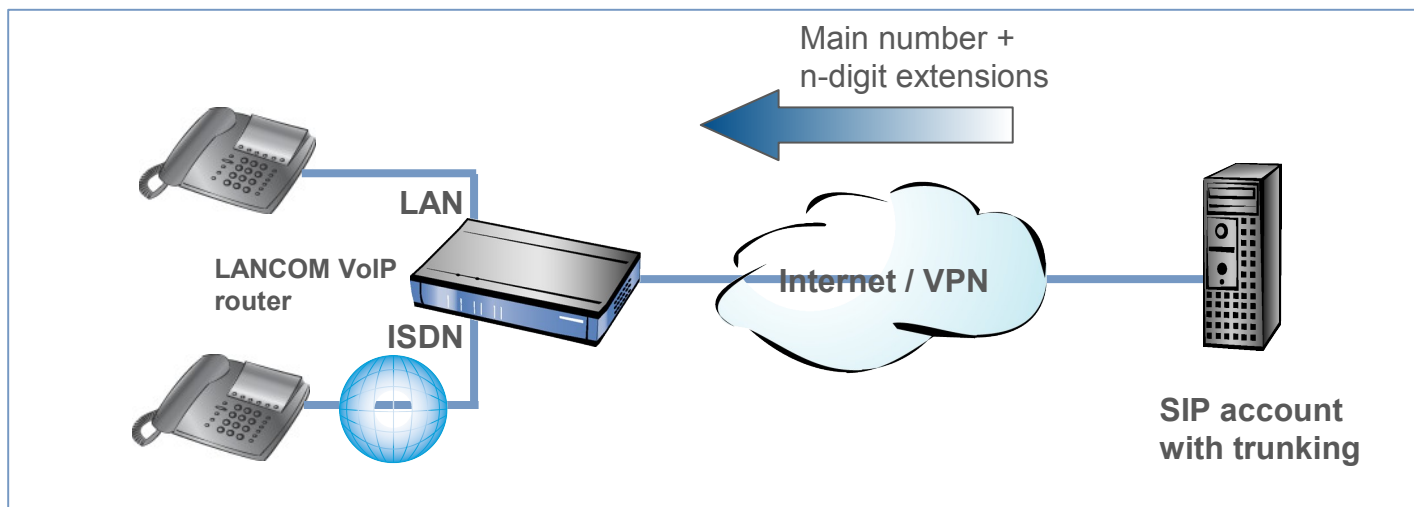
# VoIP: ISDN point-to-point connections

- ISDN  $S_0$  connections exist in two versions:
  - With the “point-to-multipoint connection”, each  $S_0$  bus has the use of a series of telephone numbers (“MSNs”), e.g. up to 10
  - The "point-to-point connection" features a single main number plus the extensions (e.g. 2 or 3 digit)
    - The traditional connection for companies



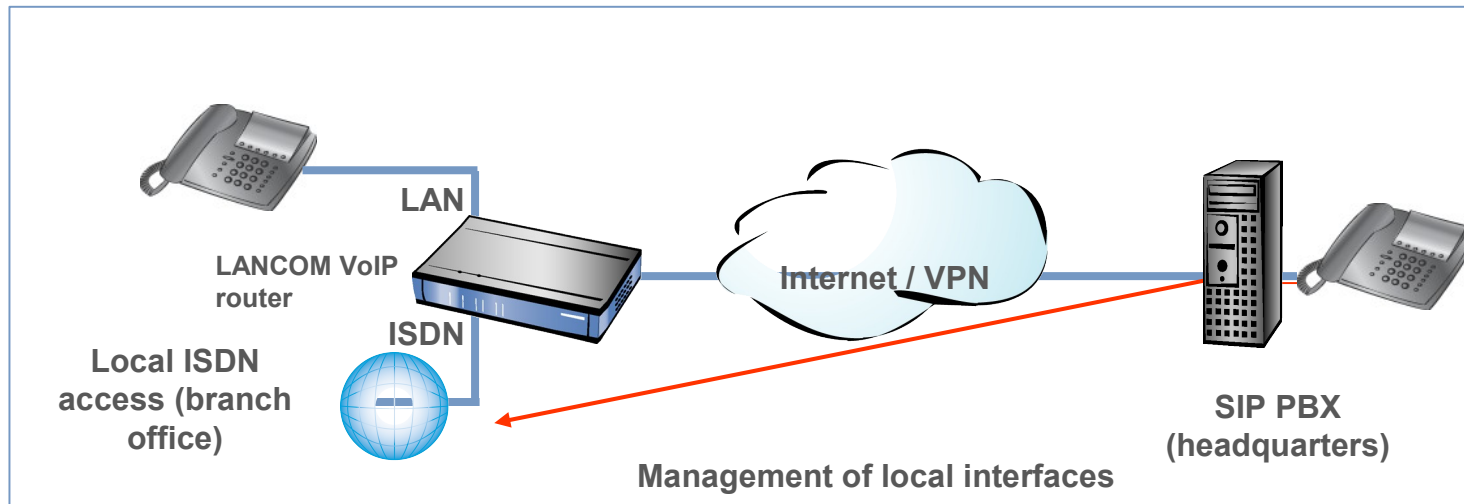
# VoIP: SIP trunking

- Unlike a single line SIP account, business VoIP providers with SIP trunking offer a solution that is equivalent to ISDN point-to-point connections by offering multiple telephone numbers
  - LANCOM supports SIP trunking based on the ITU Q.1912 recommendation
  - The inability to work with extension numbers has been one of the main obstructions to the use of VoIP for business customers



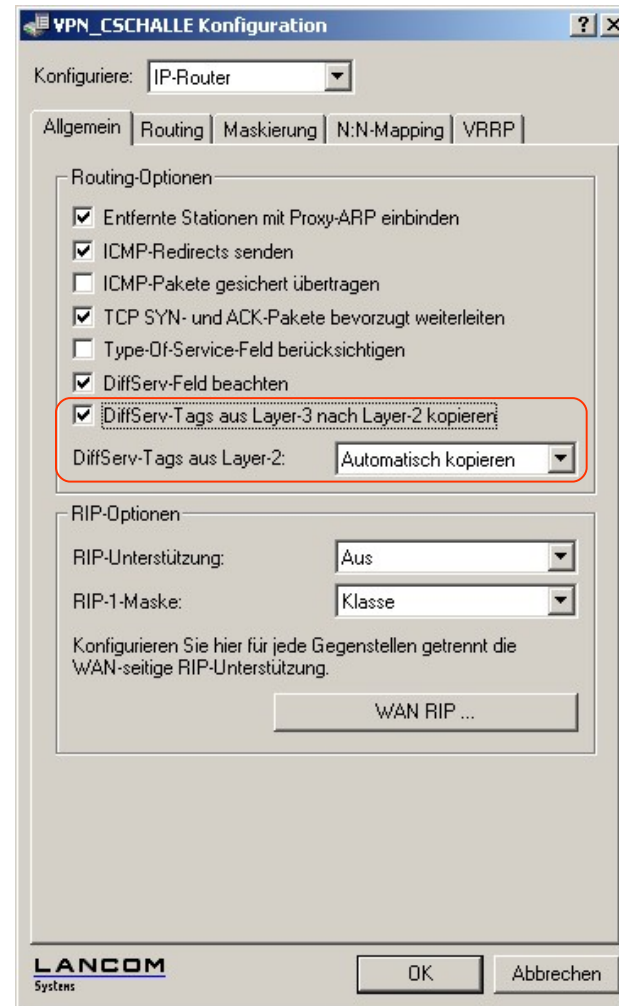
# VoIP: SIP remote gateway

- Local ISDN interfaces on the LANCOM VoIP router are available to the central SIP PBX
  - Central least-cost routing
    - Local break-in and local break-out
  - Use of local ISDN dial-in points in other countries via VPN
  - Central call switching and logging



# VoIP: Layer 2 ↔ Layer 3 tagging

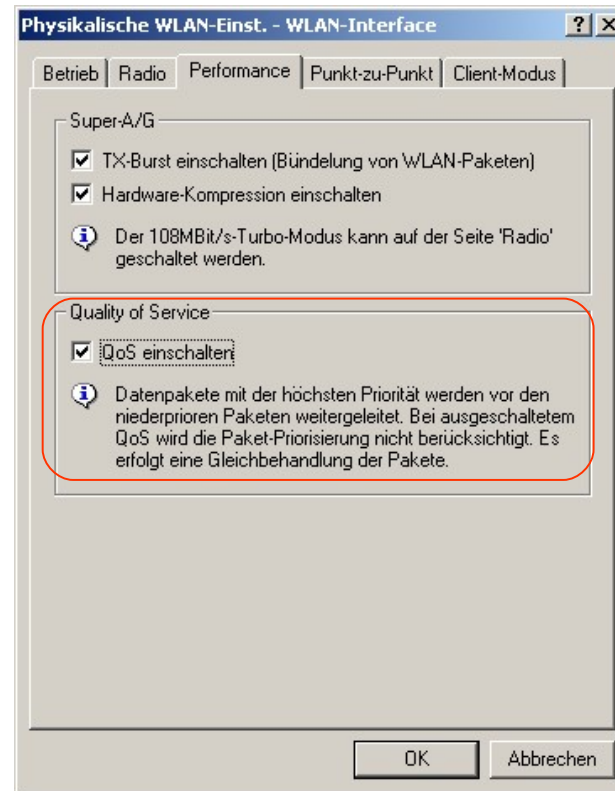
- Enables end-to-end Quality of Service of Service
- e.g. for VoIP telephones that work with VLAN priorities according to 802.1p:
  - VLAN priorities (layer 2) are copied to IP (layer 3, DiffServ/ToS)
  - ...voice data is transmitted over the IP connection (e.g. VPN)...
  - ...and DiffServ/ToS priorities are copied back to VLAN



# WLAN:: QoS according to 802.11e / WME

## Quality of Service for WLAN connections

- Four prioritization categories: Voice, video, best effort and background
- Control based on VLAN priority (Ethernet), DiffServ or TOS attribute (IP packets)
- Especially important for voice transmissions over WLAN (Voice over WLAN)



# WLAN:: Fast roaming with 802.1x

Fast roaming throughout WLAN installations with 802.1x authentication; offers highest possible mobility together with highest security in enterprise installations

- PMK caching: "Remembers" authenticated clients
- Preauthentication: Registration of clients at the next access point in advance

Effect: Similar roaming speeds as with the simple preshared key method due to a reduction in avoidable communications with the 802.1x RADIUS server





# WLAN:: Integrated RADIUS server

- Central provision of access control lists based on MAC addresses
  - Local ACLs can be made available to up to 16 other access points

(LANCOM 1821 Wireless ADSL (Ann.B) 6.10.0035 / 12.05.2006)

---

[Expert Configuration](#)

 [Setup](#)

 [RADIUS](#)

## Server

 [Authentication-Port](#) 1812

 [Clients](#) 16 x [IP-Address,Secret]

---

 [Help \(Reference Manual\)](#) ⌚ 5/14/2006 22:37

 [Previous Page](#)

 [Entry Page](#)

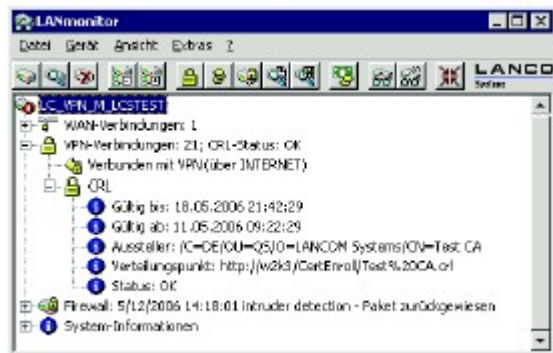


[LANCOM Systems Homepage](#)



# VPN:: Certificate revocation lists (CRL)

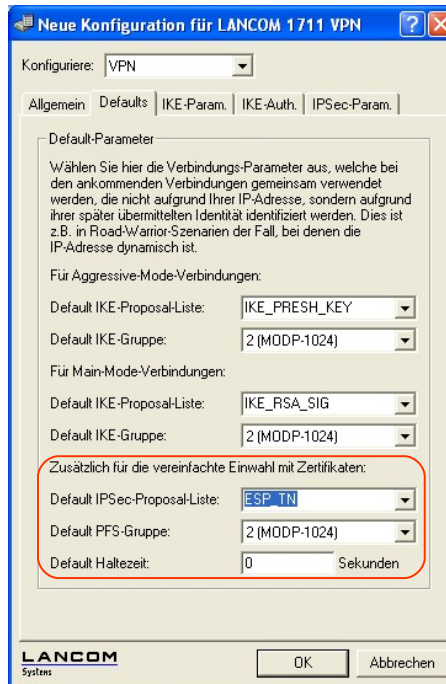
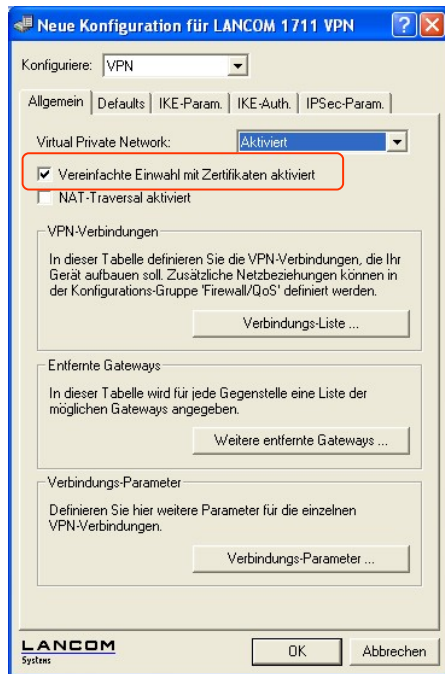
- Blocking of VPN access rights based on digital certificates
- The revocation list on the certificate server is checked at regular intervals,
  - even prior to certificate expiry
- Easy handling of VPN access with staff fluctuation and temporary access rights
  - CRL status display in LANmonitor



Available  
for  
LANCOM  
1700  
series,  
7111 and  
8011 only

# VPN:: RAS user template

- Until now: Separate entry into the configuration is necessary for each VPN RAS user
- New: All VPN client connections with digital certificates can be programmed with a single entry in the configuration
  - “VPN Remote Access User Template”



Available  
for  
LANCOM  
1700  
series,  
7111 and  
8011 only

# Performance: Improved VPN & routing engine

- More IPsec performance
  - Up to 24 Mbps IPsec (LANCOM 17xx)
  - Up to 63 Mbps IPsec (LANCOM 8011 VPN)
- More firewall performance
  - Up to 77 Mbps firewall throughput (LANCOM 17xx)
  - Up to 94 Mbps firewall throughput (LANCOM 8011 VPN)
- Detailed information in the new LANCOM Performance Techpaper
  - Available as of June 2006



# UMTS: New HSDPA cards

The LANCOM 3550 Wireless in combination with the UMTS/VPN Option supports the following new UMTS/HSDPA cards:

- Option Globetrotter GT MAX
  - HSDPA card
  - Identical: T-Mobile web'n'walk card compact

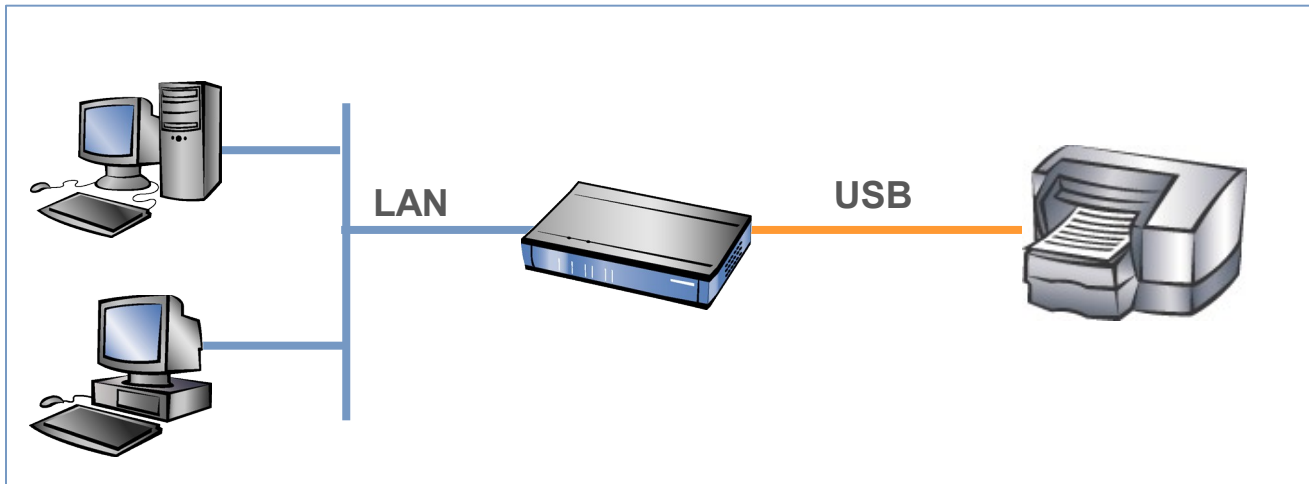


- Option Globetrotter GT Fusion +
  - HSDPA / WLAN combination cards
  - Identical: T-Mobile web'n'walk card WLAN



# General: USB printer port

- Enabling low cost USB printers to act as network printers
  - For all LANCOMs with USB interface
  - Parallel print jobs are saved on the PCs and processed in sequence
- Bidirectional data exchange is possible
  - e.g. for toner-level messages
- Support of the RAW and LPR format (RFC 1179)
  - Easy installation under Windows 2000 and XP



# General: ISDN

- Any LANCOM router with an ISDN interface can check whether it is connected to the correct line
  - The theft of a router with its VPN access data presents the danger of an attack on the network by using the access data stored on the router
  - As of LCOS 6.1, the existing method "self-initiated call back via B channel" is supplemented by an option to use the D channel

Furthermore, as of LCOS 6.1, the ISDN leased-line connection operation is activated in all devices with an ISDN interface



# Further new functions and features

- Extended WLAN protocol filter
  - New: Now with DHCP address tracking
- Extended documentation of the RADIUS functions in LANCOMs

## LANconfig

- Configuration protocols for can be selected each device (HTTPS, HTTP, TFTP)
- Group editing of device properties
- "Check" via HTTPS
- New Access Wizard for T-DSL Business with ISDN backup
- Search for devices from PCs with multiple network cards

## LANmonitor

- Display of reserved bandwidth per connection
- VPN: CRL status information display





## Further information

More than 40 new pages of background information about the latest functions in LCOS 6.10 are available in the new LCOS reference manual

- Download for free from [www.lancom-systems.com](http://www.lancom-systems.com)

The detailed revision history is in the release notes for LCOS 6.10

**LCOS** 6.10  
[LANCOM OPERATING SYSTEM]



# Service and Support

We wish you every success with your new LANCOM product!


We look forward to your **praise and criticism, suggestions or questions** to [info@lancom.de](mailto:info@lancom.de).

The latest information about Service and Support can be found on our Support flyer, our Internet site or from our **Knowledge Base** under [www.lancom-systems.de/eu/support](http://www.lancom-systems.de/eu/support).

If the manual and our current support themes in the Internet are of no help to you, then our **Support Hotline** is available to you in Germany on work days from 9:00 – 17:00h under 0900-1-LANCOM (= 0900-1-526266) (1.24 € / Min. from German landlines).

Your LANCOM Systems Team



The image features a blue header bar at the top. The main content area has a light blue background with a faint grid pattern. In the center, the word "LANCOM" is written in large, bold, black, sans-serif capital letters. A horizontal blue line is positioned directly below the "LANCOM" text. Below this line, the word "Systems" is written in a smaller, black, sans-serif font. In the background, there is a blurred image of a LANCOM network switch or router. The overall design is clean and professional.

# LANCOM

Systems

Page <Nr.>

**LANCOM**  
Systems