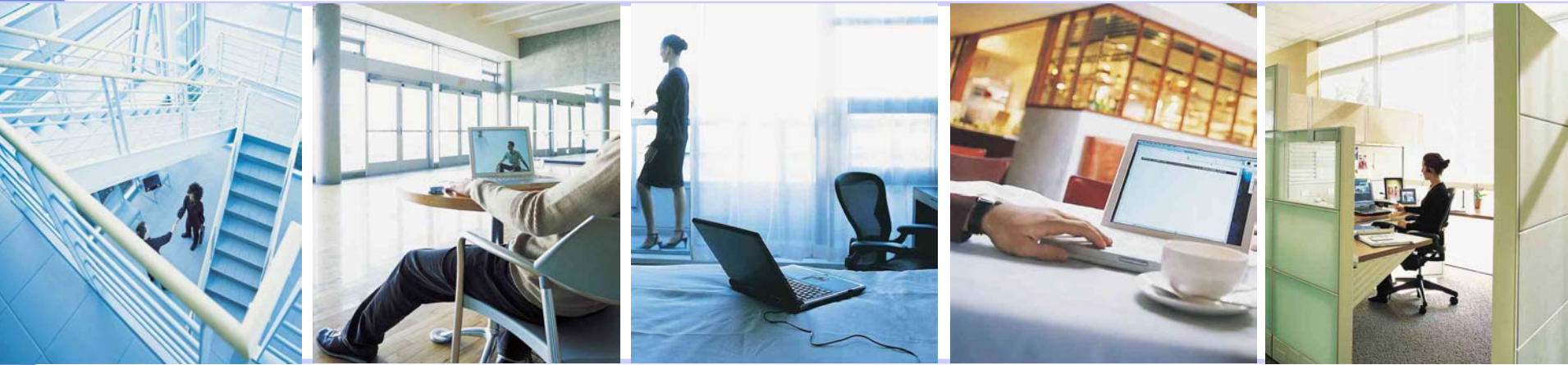


LANCOM Systems

... connecting your business



LANCOM Software Version 3.42

June 2004

© 2004, LANCOM Systems GmbH

www.lancom.de

LC.OS 3.42
[LANCOM OPERATING SYSTEM]

LANCOM
Systems

LANCOM Systems

... connecting your business

LCOS 3.42
[LANCOM OPERATING SYSTEM]

Contents

On the following pages we would like to give an overview of the new features and enhancements of this new LANCOM software.

In particular, the following items will be covered:

- ▶ New LCOS version 3.42 - highlights
- ▶ New AirLancer Client Features
- ▶ Service and Support

Information about the features of previous LCOS releases can be found in the [documentation part](#) of the LANCOM CD.

LANCOM
Systems

LANCOM Systems

... connecting your business

LCOS 3.42
LANCOM OPERATING SYSTEM

New LCOS Version 3.42

Highlights:

▶ Supported LANCOM models:
800, 1000, 1100,
2000, DSL/10,
DSL/I-10, DSL/1610,
DSL/I-1611, 821,
1621, 4000 series,
6000 series,
Wireless L-11/IL-11,
7011 VPN, L-54
Wireless, 3050 and
3550 Wireless,
LANCOM 1511/1521
Wireless (A)DSL,
LANCOM 1711 VPN,
LANCOM 1811/1821
Wireless (A)DSL,
LANCOM 8011 VPN

▶ Also for ELSA
LANCOM and
Telekom T-Octopus
LAN

- ▶ Wireless LAN Super A/G
- ▶ Multi SSID
- ▶ more WLAN enhancements
- ▶ IP-Redirect
- ▶ New drivers suite for AirLancer Client Adapter
- ▶ VPN trigger call
- ▶ New LANCOM Reference Manual

LANCOM
Systems

LANCOM Systems

... connecting your business

LCOS 3.42
[LANCOM OPERATING SYSTEM]

Wireless LAN Super A/G

Performance enhancement for all LANCOM 54 Mbps WLAN cards and Access Points

New AirLancer drivers with Super A/G:

www.lancom.de

- ▶ MC 54ag
- ▶ MC 54ab
- ▶ MC 54g
- ▶ PCI 54ag

108
Mbps **ag**

The logo features the text '108 Mbps ag' in a bold, sans-serif font. The '108' is in black, 'Mbps' is in a lighter grey, and 'ag' is in a dark grey. Above the text are three blue, curved lines representing signal waves.

- ▶ 108 Mbps **Turbo Mode** now also for 802.11g
- ▶ **Bursting** for 802.11a and 802.11g
- ▶ Net data rate increases from 20 up to above 50 Mbps*!

**measured with NetIO, 32k packets RX; LANCOM 1811 Wireless DSL*

LANCOM
Systems

LANCOM Systems

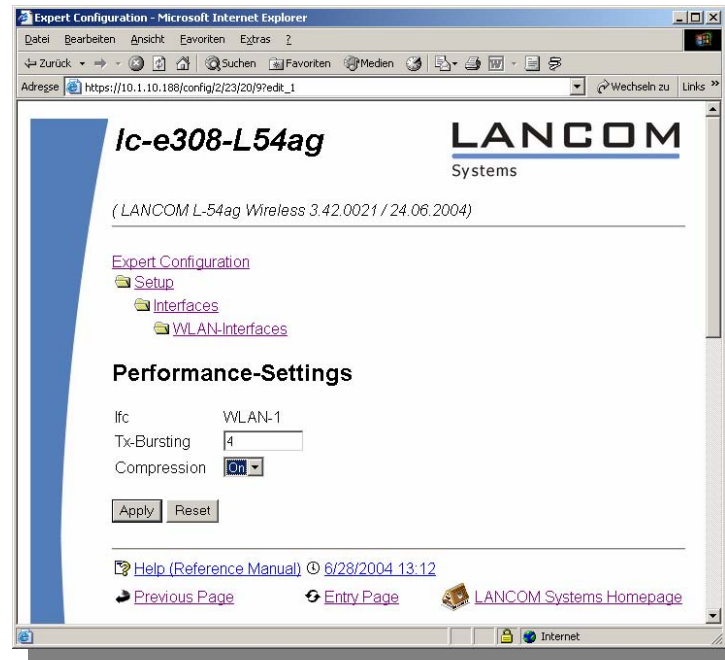
... connecting your business

LC.OS 3.42
[LANCOM OPERATING SYSTEM]

Wireless LAN Super A/G

Hardware compression for P2P WLAN links

- ▶ Net throughput of up to 60 Mbps*



108ag
Mbps

For LANCOM with
54 Mbps radio
module

- ▶ L-54g / L-54ag
- ▶ 1511 / 1521
- ▶ 1811 / 1821
- ▶ 3550

**In conjunction with Turbo Mode and Bursting. Compression efficiency depends on the underlying data content. Only between LANCOM Access Points only in exclusive P2P mode.*

LANCOM
Systems

LANCOM Systems

... connecting your business

LC.OS 3.42
LANCOM OPERATING SYSTEM

New Drivers for AirLancer Client Adapters

New AirLancer drivers with Super A/G:

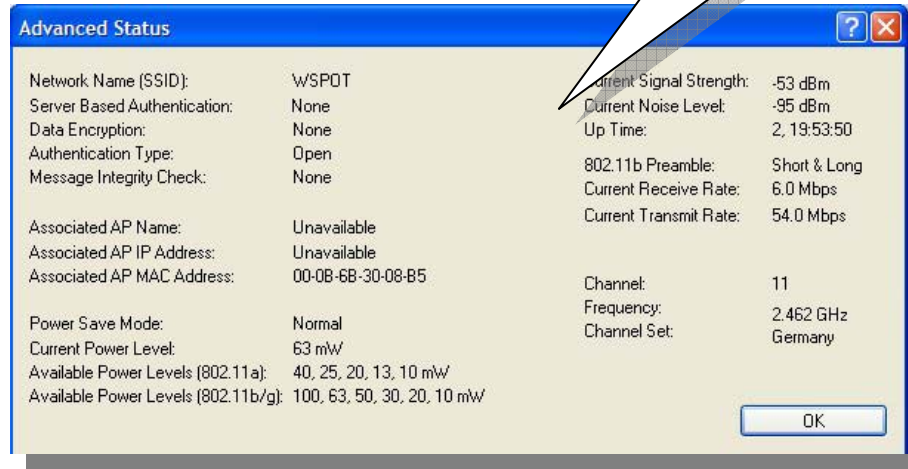
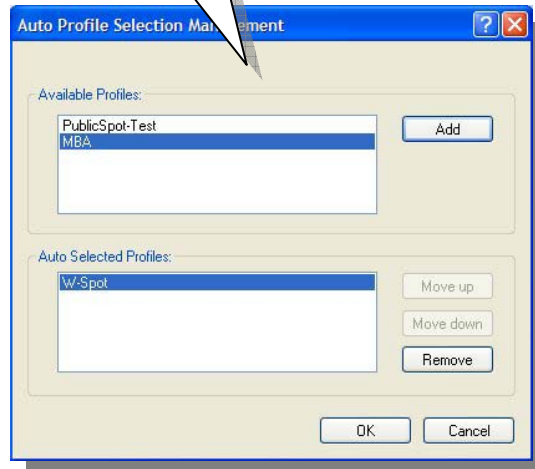
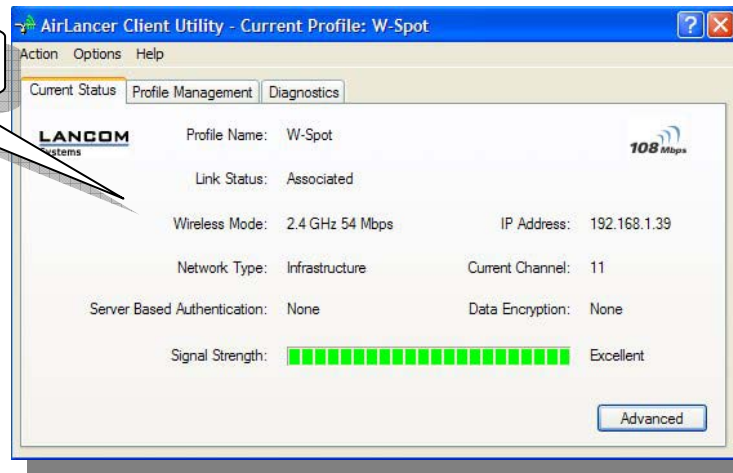
www.lancom.de

- ▶ MC 54ag
- ▶ MC 54ab
- ▶ MC 54g
- ▶ PCI 54ag

New Look

Improved Management

Detailed Status Information



108 Mbps ag

LANCOM Systems

... connecting your business

LCOS 3.42
LANCOM OPERATING SYSTEM

Multi SSID

Up to 8 independent WLAN networks per wireless interface

- ▶ Separate security settings and access control
- ▶ VLAN separation and prioritisation

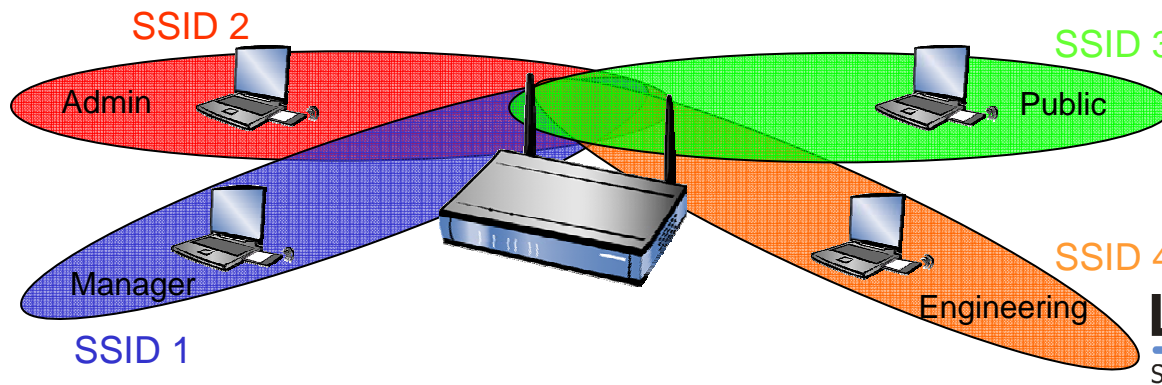
Application examples:

- ▶ Simultaneous setup of public and private WLAN networks
- ▶ Separate secure management for HotSpots
- ▶ Multiple firms on a single WLAN infrastructure

For LANCOM with
54 Mbps radio
module

- ▶ L-54g / L-54ag
- ▶ 1511 / 1521
- ▶ 1811 / 1821
- ▶ 3050* / 3550

* With external 54
Mbps radio module



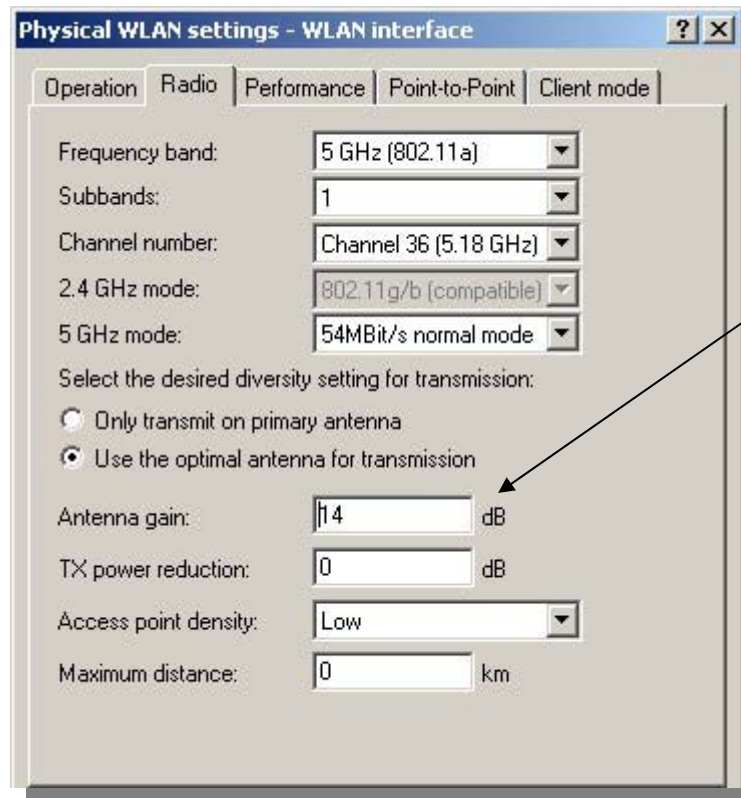
LANCOM
Systems

LANCOM Systems

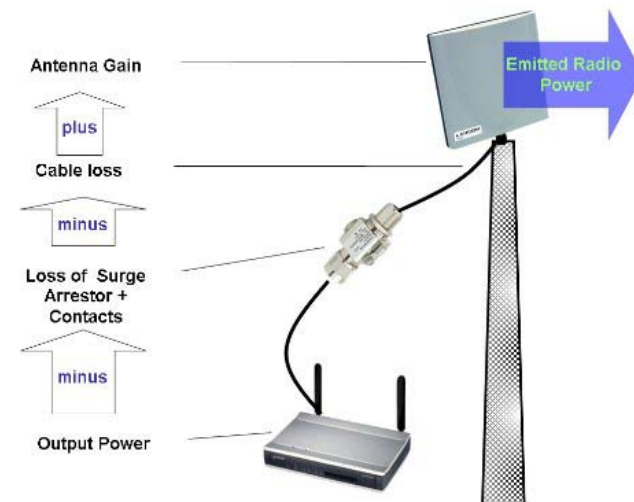
... connecting your business

LC.OS 3.42
(LANCOM OPERATING SYSTEM)

Automatic output power control



By setting the antenna gain, the output power is automatically adopted to the maximum power (referring to country, data rate and frequency band).

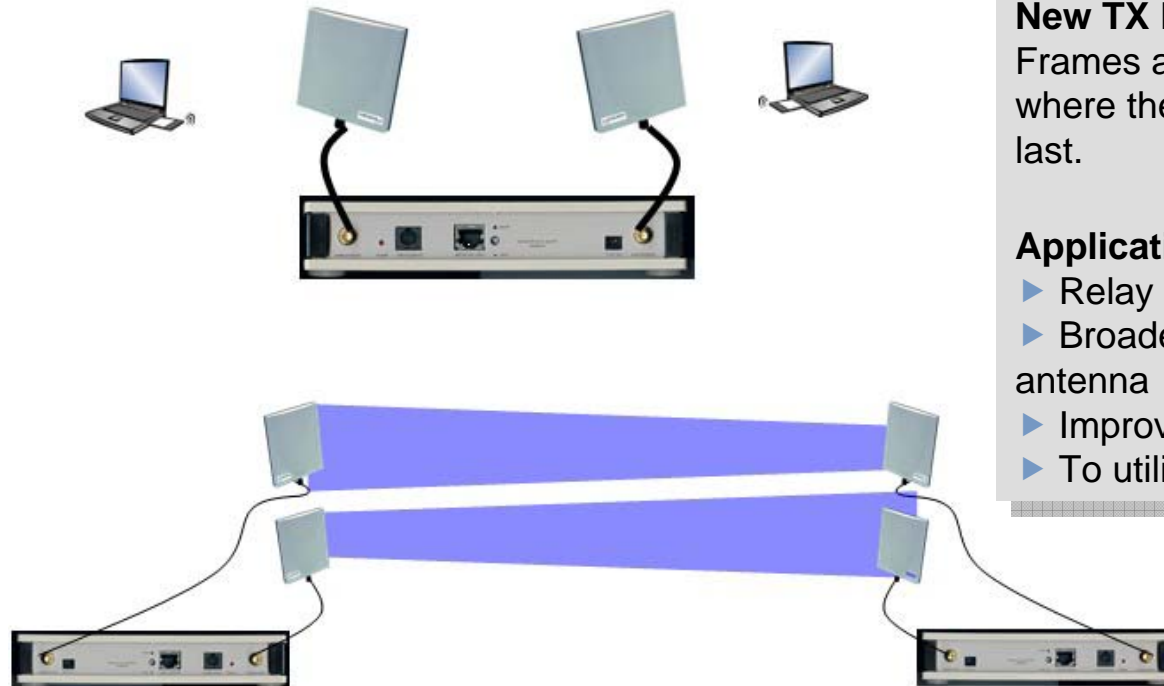


LANCOM Systems

... connecting your business

LCOS 3.42
[LANCOM OPERATING SYSTEM]

TX diversity for 2nd antenna connector



New TX Diversity

Frames are now also sent out where the client has been seen last.

Applications:

- ▶ Relay with single radio module
- ▶ Broader coverage with 2nd antenna
- ▶ Improved link quality
- ▶ To utilize RX boosters

Standard Antenna Diversity: Frames are received always by the antenna that is nearest to the client, while being sent out always on the main antenna.

LANCOM
Systems

LANCOM Systems

... connecting your business

LCOS3.42
(LANCOM OPERATING SYSTEM)

Band C Support for fixed WLAN installations in UK



Licensed C Band support

- 5,75 – 5,85 GHz
- Free in UK for fixed wireless installations
- Up to 33dBm possible
- TPC and DFS included

LANCOM
Systems

LANCOM Systems

... connecting your business

LCOS 3.42
(LANCOM OPERATING SYSTEM)

IP-Redirect for WLAN clients

Enhanced WLAN protocol filter enable to redirect all WLAN clients to a certain IP address.

- ▶ Redirection to a Security Gateway – dedicated interface WLAN to LAN
- ▶ For clients without DHCP
- ▶ Industrial data collection using terminals

The screenshot shows a configuration window titled "Protokolle - Neuer Eintrag". The fields are filled with the following values:

Name:	Redirec	OK
Protokoll:	0800	Abbrechen
Untertyp:	6	
Anfangs-Port:	500	
End-Port:	500	
Interface-Liste:	WLAN-1	
Aktion:	<input type="radio"/> Pakete verwerfen <input type="radio"/> Pakete übertragen <input checked="" type="radio"/> Pakete zur folgenden IP-Adresse umleiten:	
Umleitungs-IP-Adresse:	10.100.10.1	

LANCOM
Systems

VPN trigger call

A VPN connection can be initiated by a trigger over ISDN. This enables an external VPN tunnel initiation.

Similar to what LANCOM Dynamic VPN offers for VPN connections between LANCOM devices, the new VPN trigger call provides this capability now also in heterogenous installations.

- ▶ Trigger by ISDN data call (dial-up networking / CAPI)
- ▶ Automatic setup of connection by entry in the polling table
- ▶ Compatible to the „Lockruf“ function of NCP gateways

LANCOM Systems

... connecting your business

LCOS 3.42
[LANCOM OPERATING SYSTEM]

Reference Manual

LANCOM Reference Manual – new edition

More than 300 pages of background information, tips for your realisation and detailed description of all functions

Newly revised chapters:

- ▶ VPN
- ▶ Wireless (incl. Outdoor)

Available as PDF in our [download area](#) and on the [LANCOM CD](#)

LANCOM
Systems

Other Changes

- ▶ ISDN direct connection now available as backup for a Dynamic VPN connection between two peers with dynamic IP addresses
- ▶ Support for different local and remote VPN IDs
- ▶ LANconfig's Dynamic DNS wizard supports DNS4BIZ service now

The complete and **detailed history of changes** can be found here:

- ▶ LANCOM CD in folder „Firmware“
 - ▶ [LCOS 342 EN.pdf](#)
- ▶ LANCM CD in folder „LANtools“
 - ▶ [LANTOOLS 342 EN.pdf](#)

Furthermore, all these documents and LCOS versions are available on our website:

- ▶ www.lancom.de/download

LANCOM Systems

... connecting your business

LCOS 3.42
[LANCOM OPERATING SYSTEM]

Service and Support

We wish you all the best with your new LANCOM product!

We would be glad to receive your **feedback** – either positive or negative, as well as feature **suggestions** via email to info@lancom.de.

Please find actual support information in the enclosed support leaflet, on our Internet support website, or in our Support database (**KnowledgeBase**) under www.lancom.de/support.

In case you were not able to resolve your **questions** by reading our manuals, please contact your local distributor for further assistance.

Your LANCOM Systems Team.

LANCOM
Systems

LANCOM

Systems

LANCOM
Systems